

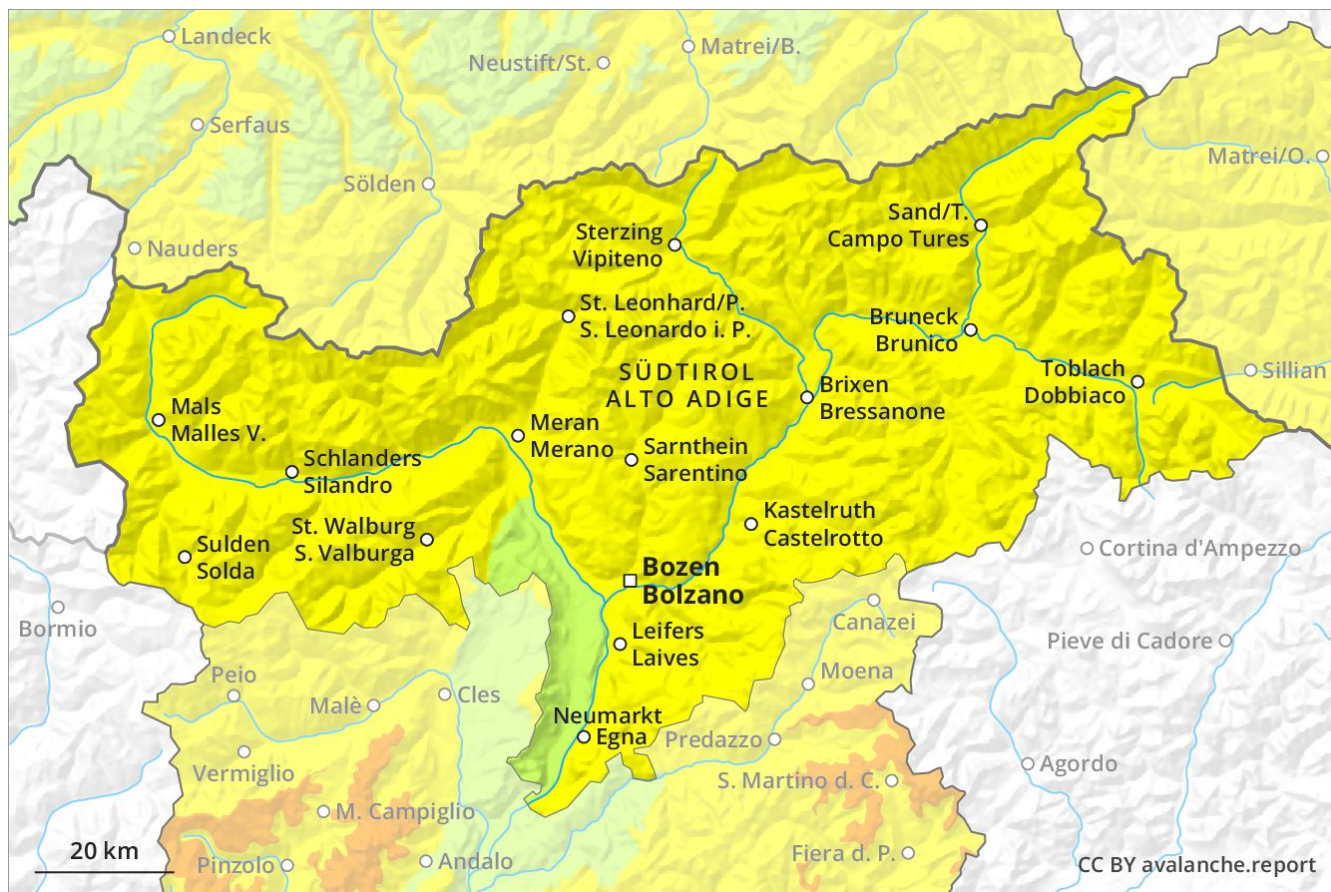
Avalanche Forecast

Thursday 25 04 2019

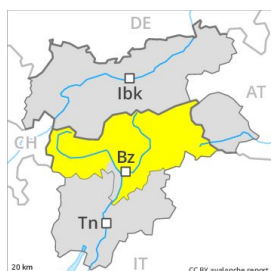
Published 24 04 2019, 17:00



Avalanche.report



Danger Level 2 - Moderate



Tendency: Increasing avalanche danger
on Friday 26 04 2019



Wet snow



3000m



Wind-drifted
snow



2600m

As the day progresses, wet avalanches are to be expected. Fresh wind slabs require caution.

Below approximately 3000 m small and medium-sized moist and wet avalanches are possible. These can in isolated cases penetrate down to the ground and reach quite a large size. Backcountry tours should be concluded early. As a consequence of fresh snow and a strong southwesterly wind, sometimes easily released wind slabs formed. The avalanche prone locations are to be found in particular on west to north to east facing wind-loaded slopes above approximately 2600 m. In particular in the regions exposed to heavier precipitation the prevalence and size of the avalanche prone locations will increase.

Snowpack

Danger patterns

dp 10: springtime scenario

dp 6: cold, loose snow and wind

In some regions up to 15 cm of snow, and even more in some localities, fell above approximately 2400 m. As a consequence of a sometimes strong southwesterly wind, wind slabs formed adjacent to ridgelines as well as at high altitudes and in high Alpine regions. The surface of the snowpack has frozen to form a strong crust only at high altitudes and will soften quickly. This applies in particular on steep north facing slopes below approximately 2600 m, and elsewhere below approximately 3000 m.

Tendency

In some regions increase in avalanche danger as a consequence of the precipitation. The fresh snow and wind slabs can be released easily, even by a single winter sport participant,.

Danger Level 1 - Low



Tendency: Constant avalanche danger →
on Friday 26 04 2019



Wet snow



2600m

Wet small and medium sized avalanches.

As a consequence of warming during the day, the likelihood of wet small and medium sized avalanches being released will increase in particular on very steep shady slopes at intermediate and high altitudes. Apart from the danger of being buried, restraint should be exercised as well in view of the danger of avalanches sweeping people along and giving rise to falls.

Snowpack

Danger patterns

dp 10: springtime scenario

The old snowpack will be wet all the way through at intermediate and high altitudes. Only a little snow is lying on south facing slopes.

Tendency

The backcountry touring conditions remain spring-like.