

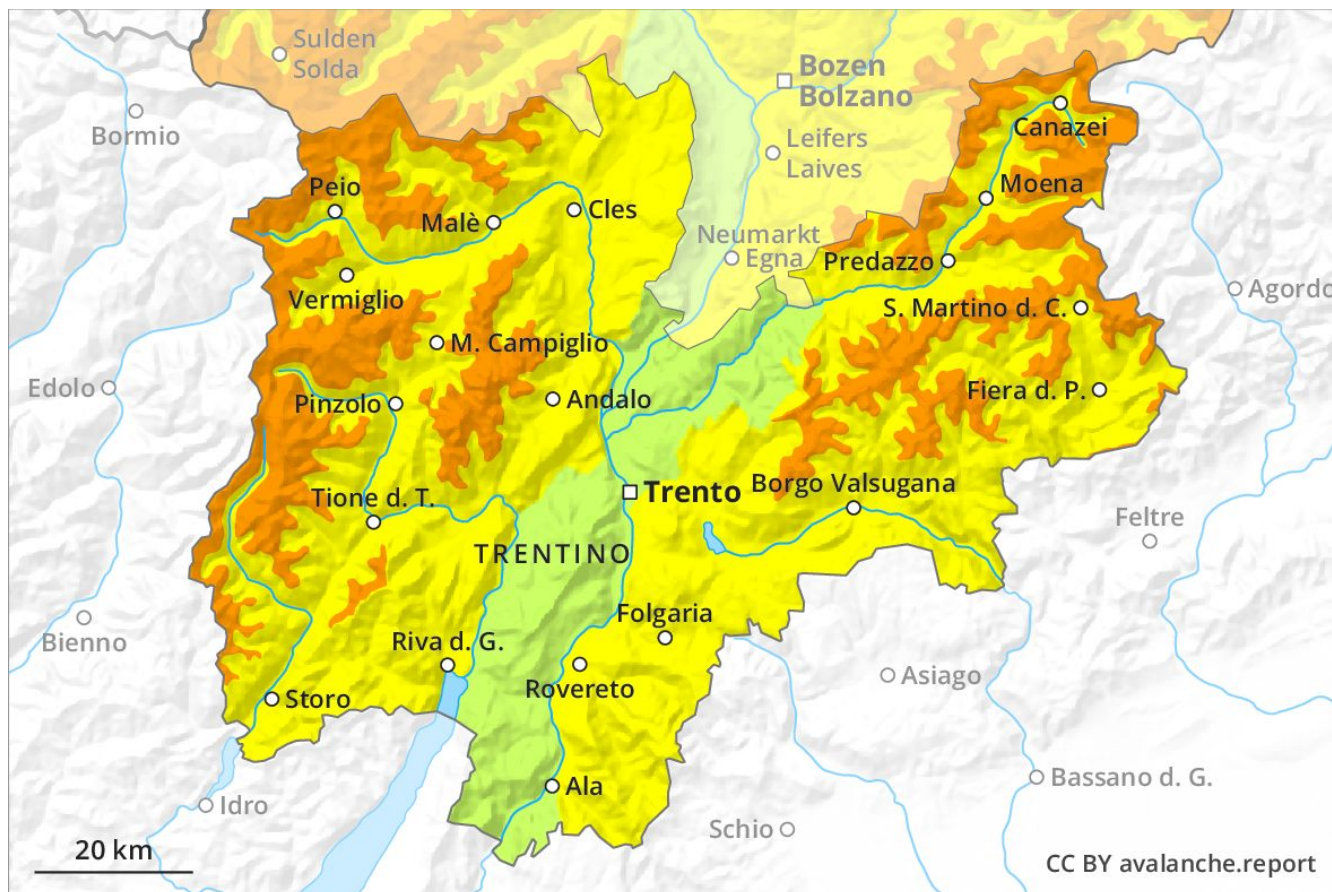
Avalanche Forecast

Tuesday 30 04 2019

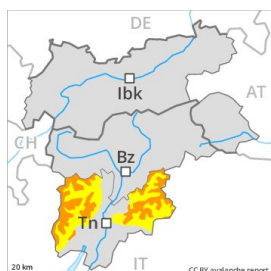
Published 29 04 2019, 17:00



Avalanche.report



Danger Level 3 - Considerable



Tendency: Decreasing avalanche danger
on Wednesday 01 05 2019



Wind-drifted
snow



New snow



Ski touring and snowshoe hiking call for meticulous route selection.

As a consequence of fresh snow and a strong southerly wind, extensive wind slabs formed in the last few days. The avalanche prone locations are to be found in particular on west to north to southeast facing wind-loaded slopes above approximately 2000 m. Also slopes adjacent to ridgelines are especially precarious. Single skiers can release avalanches in some places, including large ones. On wind-loaded slopes and from starting zones at higher altitudes individual natural avalanches are possible, in particular medium-sized ones. As the day progresses as a consequence of solar radiation there will be only a slight increase in the danger of moist and wet avalanches. Backcountry touring calls for experience in the assessment of avalanche danger and careful route selection.

Snowpack

In some localities up to 50 cm of snow, and even more in some localities, has fallen in the last few days above approximately 1600 m. As a consequence of a strong to storm force wind from southerly directions, deep wind slabs formed. The wind slabs are lying on soft layers in particular on steep shady slopes. They are mostly easy to recognise but can be released easily especially at their margins. In some cases fresh snow and wind slabs are lying on an old snowpack that is wet all the way through. This applies in particular on steep sunny slopes below approximately 3000 m and on shady slopes in particular below approximately 2400 m. Isolated avalanche prone weak layers exist in the bottom section of the snowpack especially in shady places that are protected from the wind.

Tendency

The backcountry touring conditions remain wintry at high altitude. Temporary increase in avalanche danger as a consequence of warming during the day.

Danger Level 2 - Moderate



Tendency: Constant avalanche danger →
on Wednesday 01 05 2019



Wet snow



Wet and gliding avalanches especially on steep grassy slopes.

As a consequence of warming during the day, the likelihood of wet loose snow avalanches being released will increase in particular on very steep shady slopes at intermediate and high altitudes. Apart from the danger of being buried, restraint should be exercised as well in view of the danger of avalanches sweeping people along and giving rise to falls.

Snowpack

The fresh snow and wind slabs of the last two days are lying on the quite favourable surface of an old snowpack in all aspects above approximately 1800 m. Only a little snow is lying on south facing slopes.

Tendency

The backcountry touring conditions remain spring-like.

Danger Level 2 - Moderate



Tendency: Decreasing avalanche danger
on Wednesday 01 05 2019



Wet snow



Treeline

As a consequence of warming during the day, the likelihood of wet loose snow avalanches being released will increase.

From origins in starting zones at higher altitudes individual natural avalanches are possible, but they will be mostly small. As a consequence of warming during the day, the likelihood of moist and wet avalanches being released will increase for a while in particular on steep grassy slopes at high altitude. Backcountry touring calls for defensive route selection.

Snowpack

15 to 30 cm of snow. has fallen in the last few days above approximately 1000 m. The fresh snow and wind slabs of the last few days are bonding quite well with the old snowpack in all aspects. The old snowpack remains generally moist. Hardly any snow is lying on south facing slopes.

Tendency

The backcountry touring conditions remain spring-like.