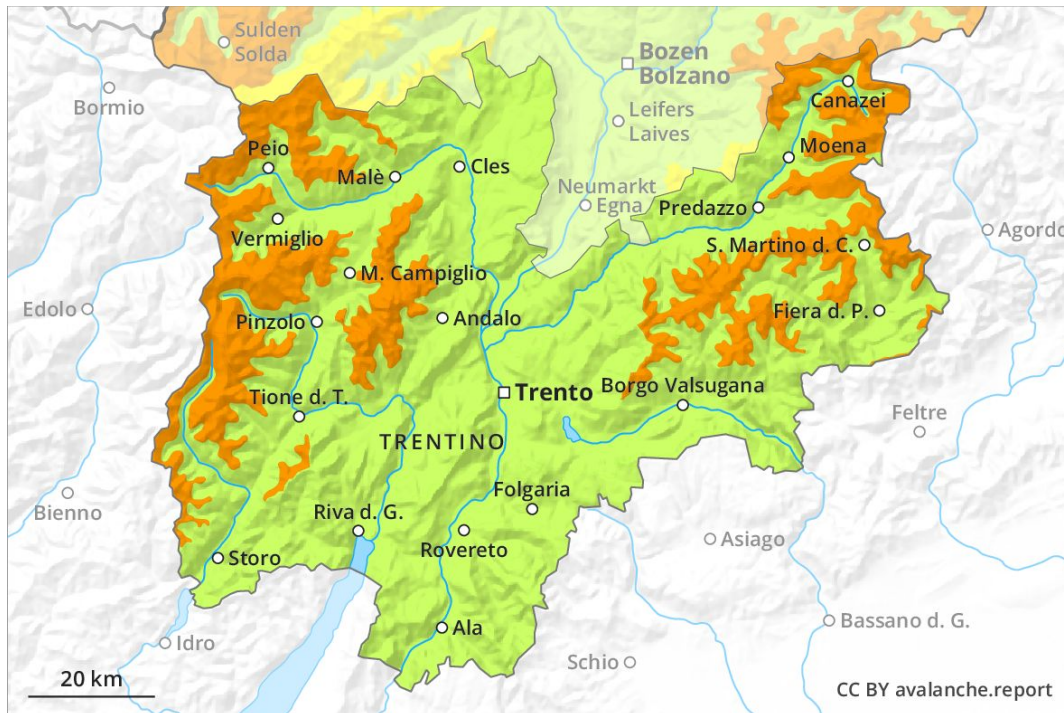
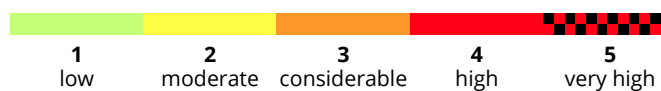
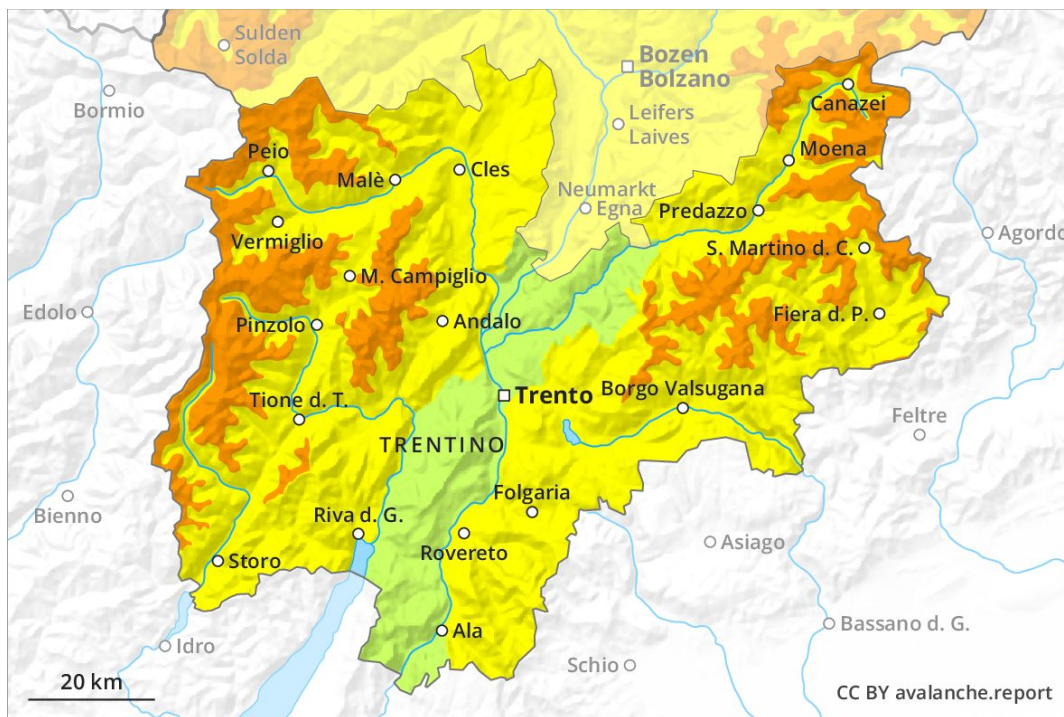


AM

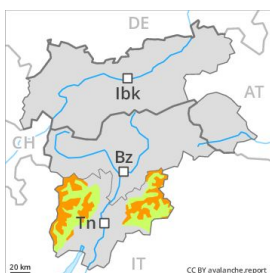


PM



Danger Level 3 - Considerable

AM:



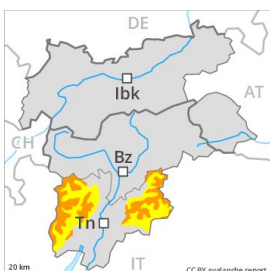
Tendency: Decreasing avalanche danger
 on Thursday 02 05 2019



Wind-drifted
 snow



PM:



Tendency: Decreasing avalanche danger
 on Thursday 02 05 2019



Wind-drifted
 snow



Wet snow



The backcountry touring conditions remain wintry at high altitude.

As a consequence of fresh snow and wind, extensive wind slabs formed in the last few days. The avalanche prone locations are to be found in particular on west to north to southeast facing wind-loaded slopes above approximately 2000 m. Also slopes adjacent to ridgelines are especially precarious. Single skiers can release avalanches in some places, including large ones. On wind-loaded slopes and from starting zones at higher altitudes individual natural avalanches are possible, in particular medium-sized ones. In the afternoon as a consequence of warming during the day there will be a gradual increase in the danger of moist and wet avalanches. Backcountry touring calls for experience in the assessment of avalanche danger and careful route selection.

Snowpack

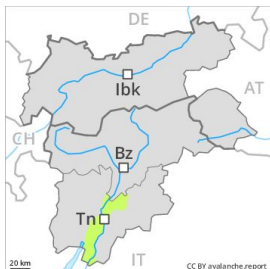
The surface of the snowpack will freeze, but a strong crust will not form and will soften during the day. As a consequence of a strong to storm force wind from southerly directions, deep wind slabs formed in particular adjacent to ridgelines. The wind slabs are lying on soft layers in particular on steep shady slopes. They are mostly easy to recognise but can be released easily especially at their margins. In some cases fresh snow and wind slabs are lying on an old snowpack that is wet all the way through. This applies in particular on steep sunny slopes below approximately 3000 m and on shady slopes in particular below approximately 2400 m. Isolated avalanche prone weak layers exist in the bottom section of the snowpack especially in shady places that are protected from the wind.

Tendency

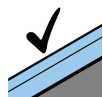
Temporary increase in avalanche danger as a consequence of warming during the day.

Danger Level 2 - Moderate

AM:



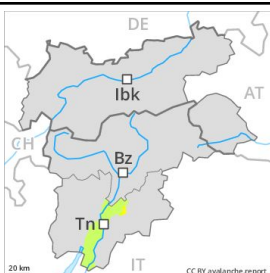
Tendency: Constant avalanche danger →
 on Thursday 02 05 2019



Favourable situation



PM:



Tendency: Constant avalanche danger →
 on Thursday 02 05 2019



Wet snow



Wet and gliding avalanches especially on steep grassy slopes.

As a consequence of warming during the day, the likelihood of wet loose snow avalanches being released will increase in particular on very steep shady slopes at intermediate and high altitudes. Apart from the danger of being buried, restraint should be exercised as well in view of the danger of avalanches sweeping people along and giving rise to falls.

Snowpack

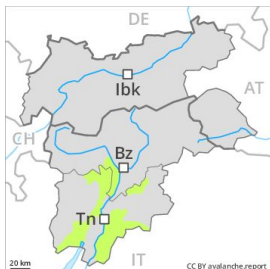
The fresh snow and wind slabs of the last two days are lying on the quite favourable surface of an old snowpack in all aspects above approximately 1800 m. Only a little snow is lying on south facing slopes.

Tendency

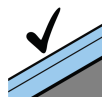
The conditions are mostly favourable.

Danger Level 2 - Moderate

AM:



Tendency: Constant avalanche danger →
on Thursday 02 05 2019

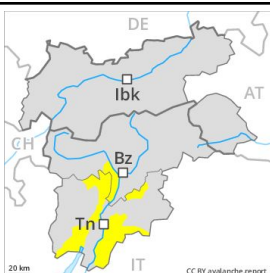


Favourable situation



Treeline

PM:



Tendency: Constant avalanche danger →
on Thursday 02 05 2019



Wet snow



Treeline

As a consequence of warming during the day, the likelihood of wet loose snow avalanches being released will increase.

From origins in starting zones at higher altitudes individual natural avalanches are possible, but they will be mostly small. As a consequence of warming during the day, the likelihood of moist and wet avalanches being released will increase for a while in particular on steep grassy slopes at high altitude. Backcountry touring calls for defensive route selection.

Snowpack

The fresh snow and wind slabs of the last few days have bonded quite well with the old snowpack in all aspects. The snowpack will be generally moist. Hardly any snow is lying on south facing slopes.

Tendency

The conditions are spring-like.