

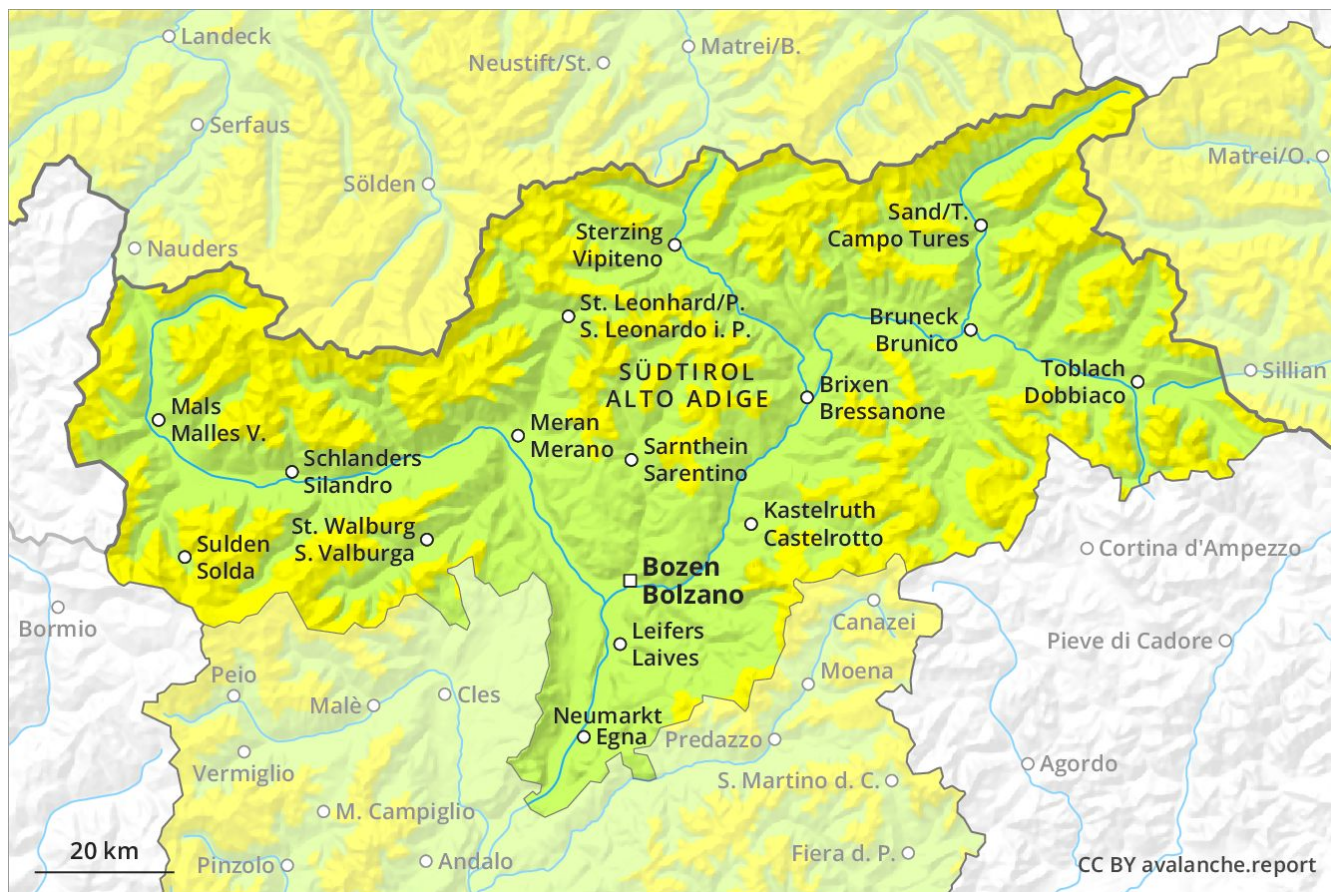
Avalanche Forecast

Friday 03 05 2019

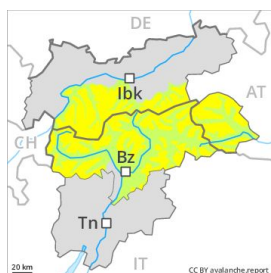
Published 02 05 2019, 17:00



Avalanche.report



Danger Level 2 - Moderate



Tendency: Increasing avalanche danger
 on Saturday 04 05 2019



Wind-drifted
 snow



Wet snow



Fresh wind slabs are to be evaluated with care and prudence.

Slight increase in danger of dry avalanches as a consequence of fresh snow and wind. This applies in particular on steep west, north and east facing slopes at high altitudes and in high Alpine regions and adjacent to ridgelines. Single winter sport participants can release avalanches in some places. The prevalence of avalanche prone locations and likelihood of triggering will increase with altitude. The somewhat older wind slabs can be released, especially by large additional loads, in all aspects in high Alpine regions. Mostly avalanches are medium-sized. The avalanche prone locations are barely recognisable because of the poor visibility. A certain danger of wet and gliding avalanches exists. This applies on steep grassy slopes below approximately 2200 m in the regions with a lot of snow.

Snowpack

Danger patterns

dp 6: cold, loose snow and wind

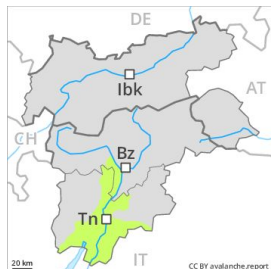
dp 3: rain

In some regions 10 to 20 cm of snow, and even more in some localities, will fall above approximately 2000 m. The fresh wind slabs are lying on soft layers in particular on steep shady slopes. This applies in particular above approximately 2400 m. Outgoing longwave radiation during the night will be severely restricted. The old snowpack will be wet all the way through at intermediate and high altitudes. Isolated avalanche prone weak layers exist in the top section of the snowpack in particular in high Alpine regions.

Tendency

Increase in avalanche danger as a consequence of the snowfall.

Danger Level 1 - Low



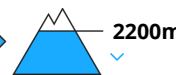
Tendency: Constant avalanche danger →
on Saturday 04 05 2019



Wind-drifted
snow



Wet snow



Slight increase in avalanche danger as a consequence of the fresh snow.

As a consequence of the snowfall, the likelihood of dry avalanches being released will increase a little. The avalanche prone locations are rather rare but are barely recognisable because of the poor visibility. Even a small avalanche can sweep snow sport participants along and give rise to falls. Decrease in danger of wet avalanches as the temperature drops.

Snowpack

The snowpack will be generally moist. Hardly any snow is lying on south facing slopes. Outgoing longwave radiation during the night will be severely restricted over a wide area. Some snow will fall in some localities.

Tendency

As a consequence of the snowfall the prevalence of avalanche prone locations will increase.