

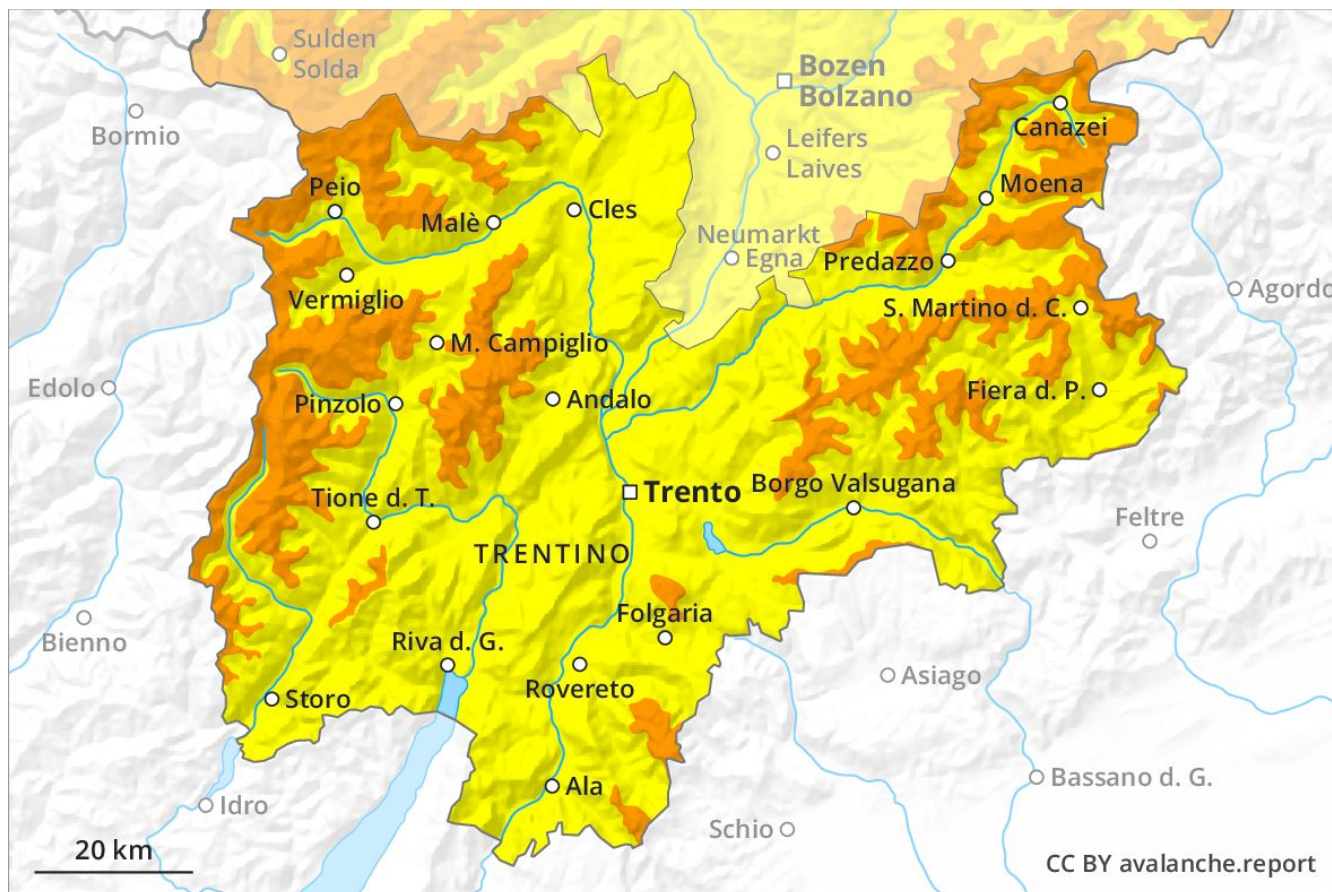
# Avalanche Forecast

## Monday 06 05 2019

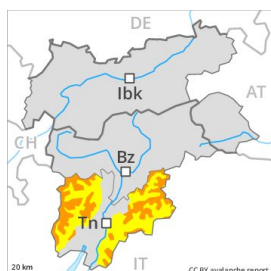
Published 05 05 2019, 17:00



Avalanche.report



## Danger Level 3 - Considerable



**Tendency: Decreasing avalanche danger**  
on Tuesday 07 05 2019



Wind-drifted  
snow



New snow



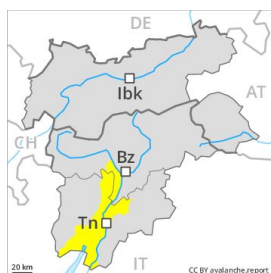
### Fresh snow and wind slabs require caution.

On wind-loaded slopes and from starting zones at higher altitudes natural avalanches are possible, but they will be mostly small. Backcountry tourers can release avalanches as before, including medium-sized ones. This applies even in case of a small load. The avalanche prone locations are to be found in particular on wind-loaded slopes of all aspects and in gullies and bowls in all aspects above approximately 2000 m. Also slopes adjacent to ridgelines are especially precarious. Backcountry touring calls for experience in the assessment of avalanche danger and careful route selection.

### Snowpack

As a consequence of northerly wind, sometimes avalanche prone wind slabs formed in particular adjacent to ridgelines. The wind slabs are lying on soft layers in particular on steep shady slopes above approximately 2400 m. The old snowpack remains moist below approximately 2200 m. Isolated avalanche prone weak layers exist in the bottom section of the snowpack especially in shady places that are protected from the wind.

## Danger Level 2 - Moderate



**Tendency: Decreasing avalanche danger**  
on Tuesday 07 05 2019



Wind-drifted  
snow



2200m



New snow



1200m

**At elevated altitudes a moderate avalanche danger will still be encountered.**

Small and, in isolated cases, medium-sized natural avalanches are possible in particular on steep grassy slopes. The avalanche prone locations are rather rare and are clearly recognisable to the trained eye. Apart from the danger of being buried, restraint should be exercised as well in view of the danger of avalanches sweeping people along and giving rise to falls.

### Snowpack

As a consequence of northerly wind, sometimes avalanche prone wind slabs formed in particular adjacent to ridgelines. The wind slabs are bonding only slowly with the old snowpack in all aspects. The old snowpack will be in most cases moist.