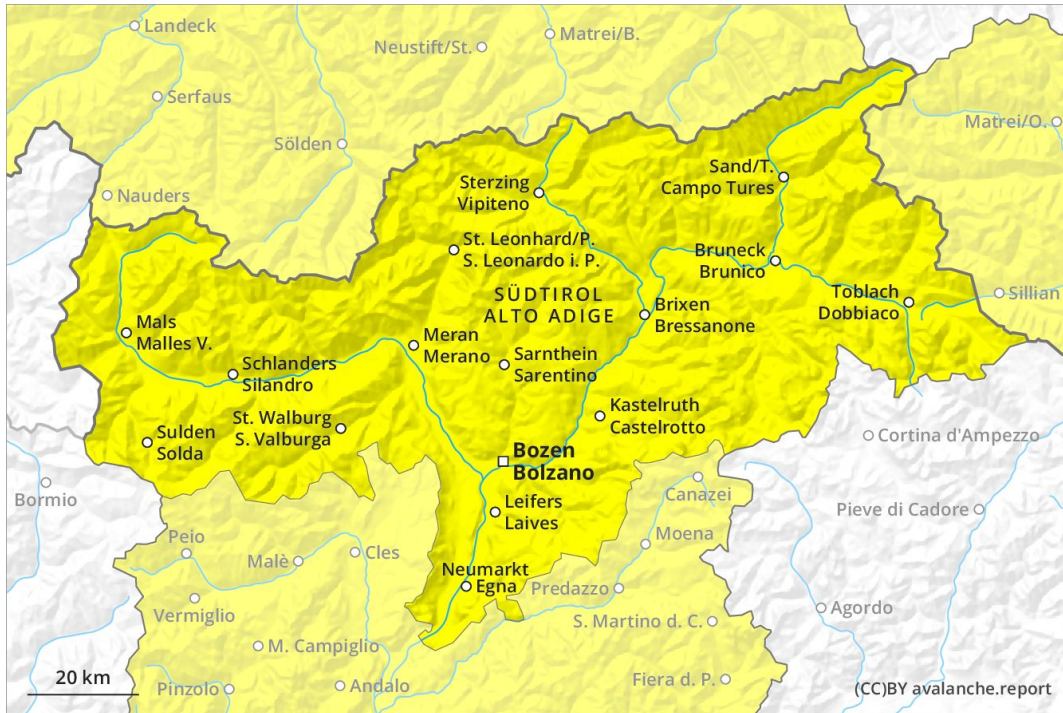
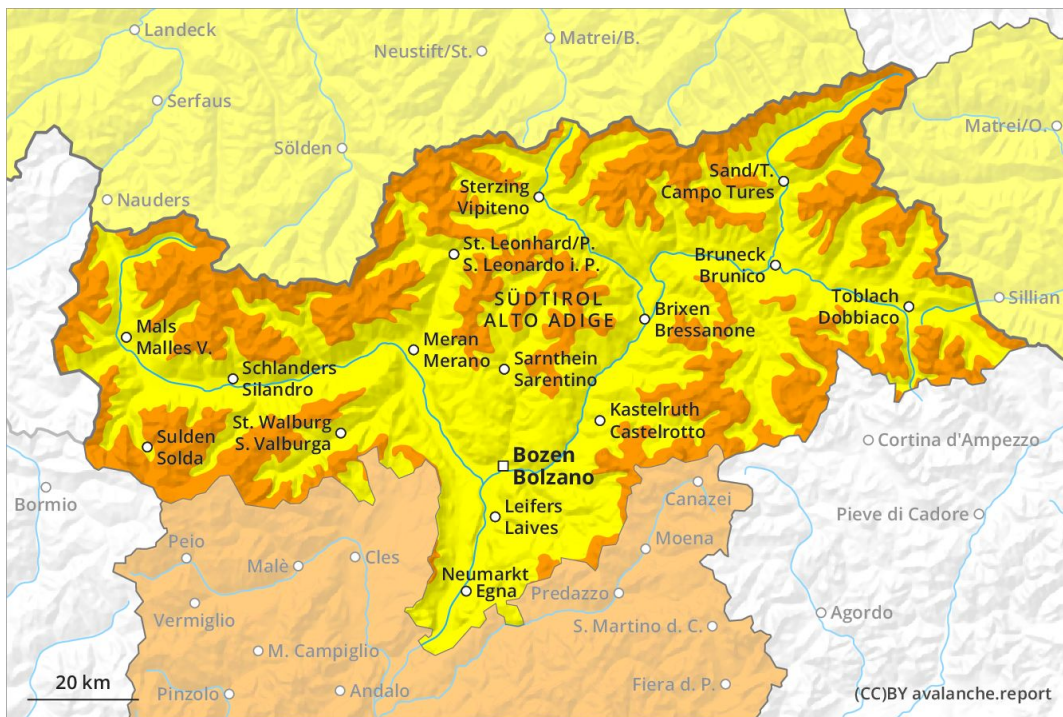




AM

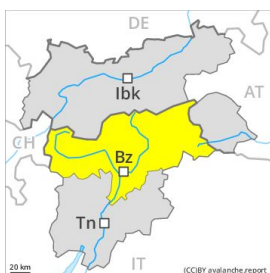


PM

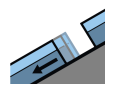


Danger Level 3 - Considerable

AM:



Tendency: Constant avalanche danger →
 on Saturday 21 12 2019



Gliding snow



2600m

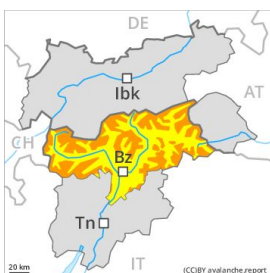


Wind-drifted snow



2400m

PM:



Treeline

Tendency: Constant avalanche danger →
 on Saturday 21 12 2019



Wind-drifted snow



Treeline



Gliding snow



2600m

Gradual increase in avalanche danger as a consequence of fresh snow and wind.

As a consequence of fresh snow and a strong to storm force southwesterly wind, avalanche prone wind slabs will form in all aspects. As the day progresses the wind slabs will increase in size additionally. Fresh snow and wind slabs can be released, even by a single winter sport participant. Especially from starting zones at higher altitudes medium-sized and, in isolated cases, large natural avalanches are possible. Below approximately 2600 m medium-sized and, in isolated cases, large gliding avalanches are possible.

Snowpack

Danger patterns

dp 6: cold, loose snow and wind

dp 2: gliding snow

20 to 30 cm of snow. will fall until the afternoon. In particular in the Ultental, in the Passeier Tal and in the Dolomites 40 to 50 cm of snow, and even more in some localities, will fall. Fresh snow and wind slabs are lying on a moist old snowpack. By late in the night the previously small wind slabs will increase in size once again. The wind will be strong to storm force. Caution is to be exercised in areas with glide cracks.

Tendency

Fresh snow and wind slabs require caution. The conditions are dangerous for ski touring, freeriding and snowshoe hiking.