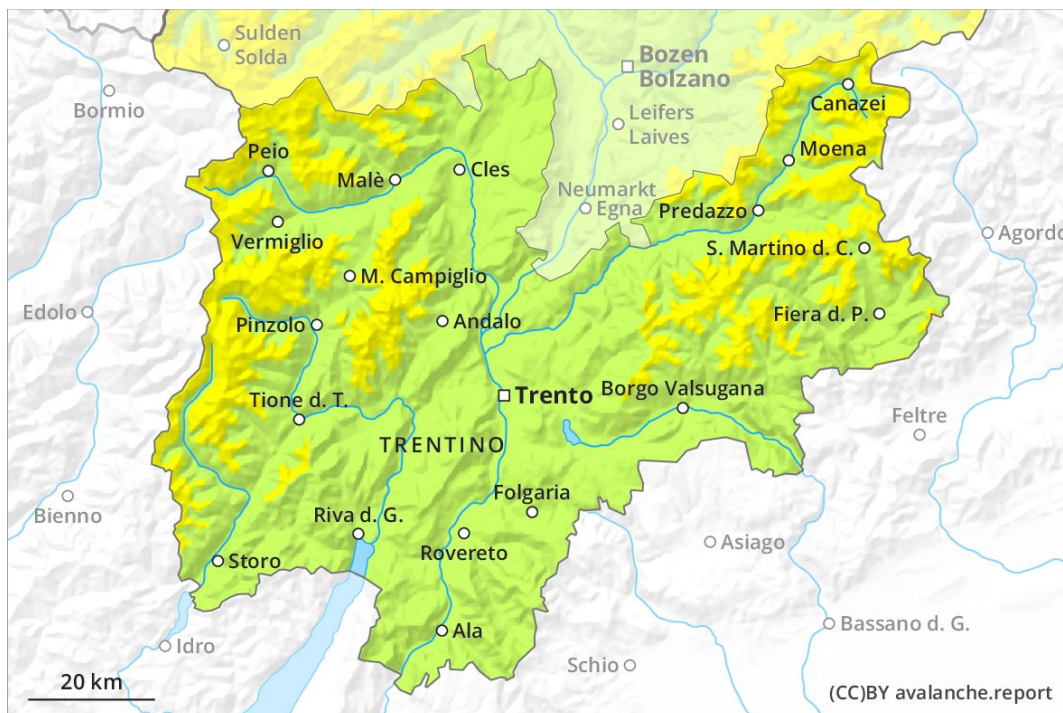
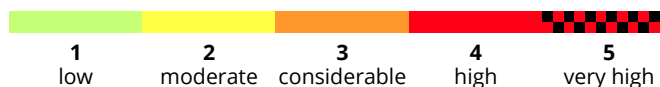
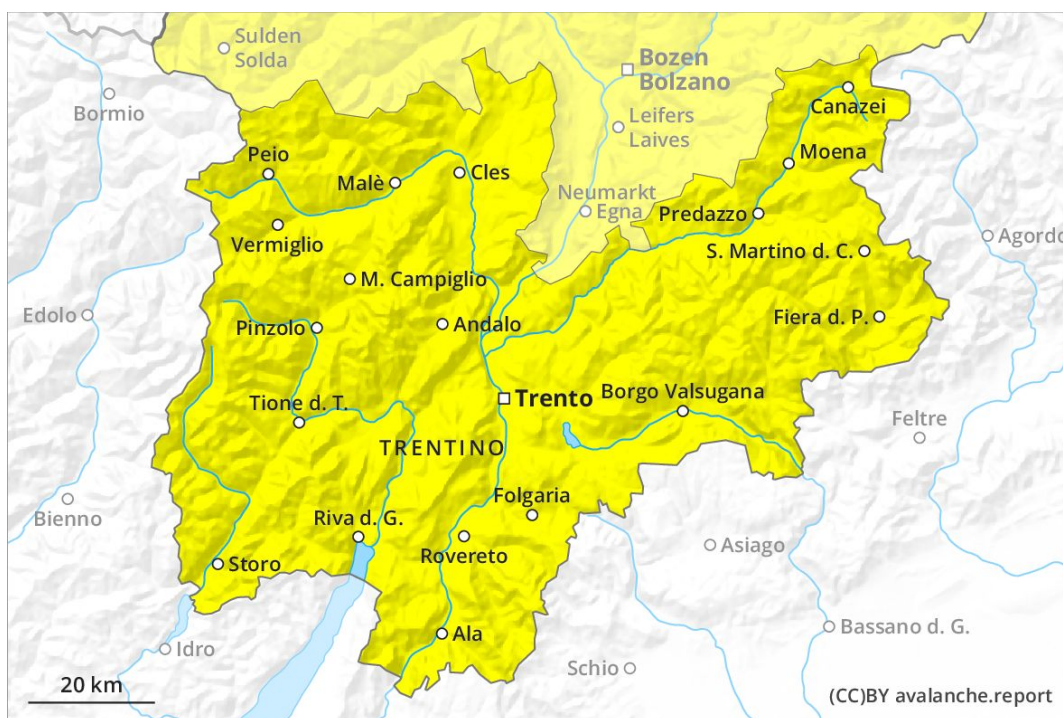




AM

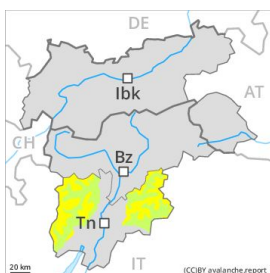


PM



Danger Level 2 - Moderate

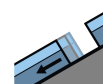
AM:



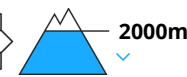
Tendency: Increasing avalanche danger
 on Saturday 04 01 2020



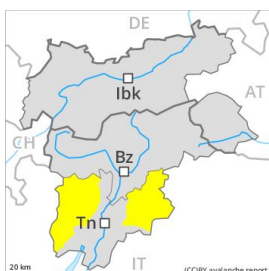
Wind-drifted snow



Gliding snow



PM:



Tendency: Increasing avalanche danger
 on Saturday 04 01 2020



Gliding snow



Wind-drifted snow



Moderate, level 2. Wind slabs require caution, especially at elevated altitudes adjacent to ridgelines.

The older wind slabs are mostly easy to recognise but to be assessed with care and prudence. Even single persons can release avalanches in isolated cases, including medium-sized ones, in particular adjacent to ridgelines and in pass areas. The avalanche prone locations are to be found also at transitions from a shallow to a deep snowpack above approximately 2200 m. In steep terrain there is a danger of falling on the icy crust. As a consequence of warming during the day and solar radiation individual small and, in isolated cases, medium-sized gliding avalanches and moist snow slides are possible. Ski touring and other off-piste activities, including snowshoe hiking, call for meticulous route selection, in particular on steep slopes above approximately 2000 m as well as on wind-loaded slopes.

Snowpack

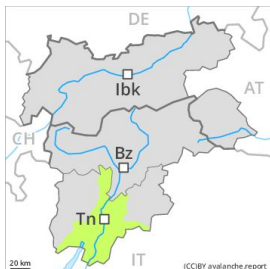
The wind slabs have formed in particular in gullies and bowls, and behind abrupt changes in the terrain. The various wind slabs have bonded quite well already together. These are bonding only slowly with the old snowpack in particular on steep shady slopes and at high altitude. Faceted weak layers exist deep in the old snowpack in particular in areas where the snow cover is rather shallow. A clear night will be followed in the early morning by quite favourable conditions generally, but the danger of wet and gliding avalanches will increase later. The snowpack will be moist at low and intermediate altitudes.

Tendency

As a consequence of the sometimes strong northerly wind the prevalence and size of the avalanche prone locations will increase on Saturday. A latent danger of gliding avalanches exists, in particular on steep grassy slopes below approximately 2400 m.

Danger Level 2 - Moderate

AM:



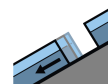
Tendency: Constant avalanche danger →
 on Saturday 04 01 2020



Wind-drifted snow



Treeline

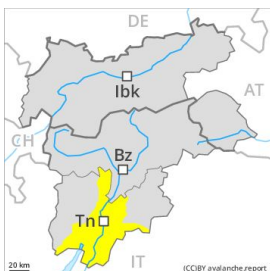


Gliding snow

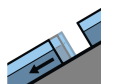


2000m

PM:



Tendency: Constant avalanche danger →
 on Saturday 04 01 2020



Gliding snow



2200m

1800m



Wind-drifted snow



Treeline

Wet snow requires caution, especially above the tree line on very steep grassy slopes.

The older wind slabs are mostly easy to recognise and can only be released in isolated cases, in particular adjacent to ridgelines and in pass areas. In steep terrain there is a danger of falling on the icy crust. As a consequence of warming during the day and solar radiation individual small and, in isolated cases, medium-sized gliding avalanches and moist snow slides are possible. Ski touring and other off-piste activities, including snowshoe hiking, call for meticulous route selection, in particular on steep slopes above approximately 2000 m as well as on wind-loaded slopes.

Snowpack

A clear night will be followed in the early morning by quite favourable conditions generally, but the danger of wet and gliding avalanches will increase later. The snowpack will be moist at low and intermediate altitudes. The wind slabs have formed in particular in gullies and bowls, and behind abrupt changes in the terrain. The various wind slabs have bonded quite well already with each other and the old snowpack.

Tendency

A latent danger of gliding avalanches exists, in particular on steep sunny slopes.