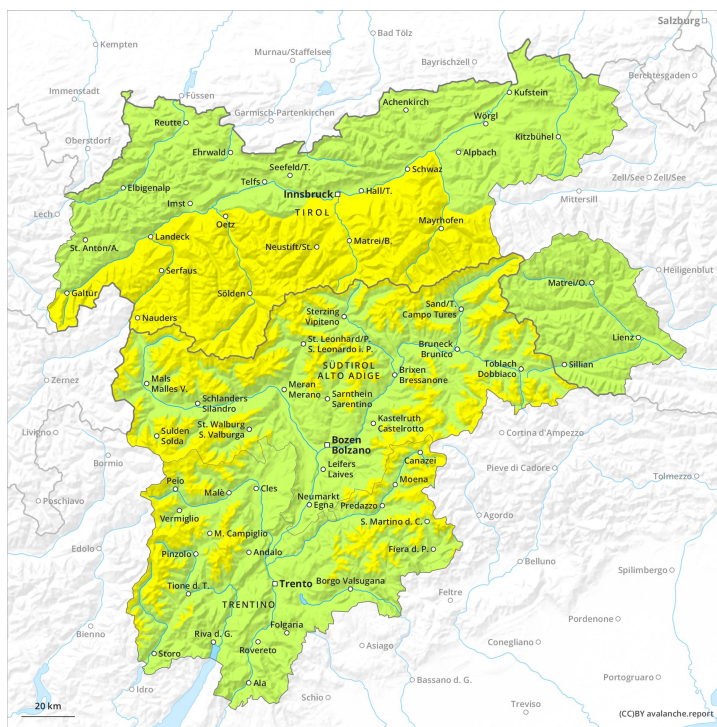
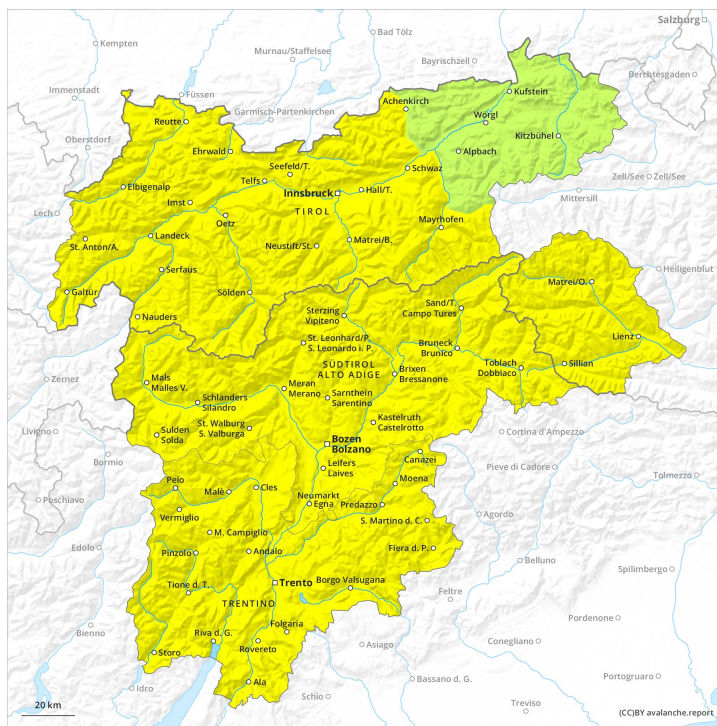




AM



PM



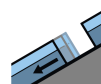
Danger Level 2 - Moderate



Tendency: Increasing avalanche danger
 on Saturday 04 01 2020



Wind-drifted
 snow



Gliding snow



Wind slabs require caution, especially adjacent to ridgelines. Temporary increase in danger of gliding avalanches as a consequence of warming during the day.

The more recent wind slabs can be released, especially by large additional loads, in particular on northwest to north to northeast facing aspects above approximately 2400 m. Mostly avalanches are medium-sized. Slight increase in danger of dry avalanches as a consequence of the moderate to strong westerly wind. The avalanche prone locations are to be found in particular adjacent to ridgelines. They are clearly recognisable to the trained eye. The wind slabs in very steep terrain are to be bypassed. Transitions from a shallow to a deep snowpack are unfavourable.

Increase in danger of gliding avalanches as a consequence of warming during the day. Small and medium-sized gliding avalanches are to be expected. This applies in particular on steep grassy slopes, especially on east, south and west facing slopes below approximately 2600 m, but in isolated cases also on steep shady slopes below approximately 2400 m. As a consequence of warming during the day and solar radiation more small and, in isolated cases, medium-sized moist loose snow avalanches are possible, in particular on rocky slopes below approximately 2800 m.

Dry avalanches can in very isolated cases be released in the old snowpack by small loads. This applies in particular on very steep shady slopes between approximately 1900 and 2400 m.

Snowpack

Danger patterns

dp 6: cold, loose snow and wind

dp 2: gliding snow

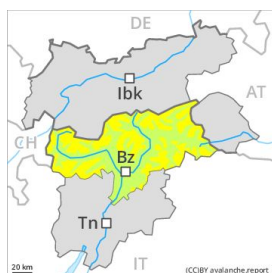
The snowpack will be subject to considerable local variations at high altitudes and in high Alpine regions. The more recent wind slabs are lying on soft layers in particular on shady slopes at high altitudes and in high Alpine regions. The somewhat older wind slabs have bonded quite well with the old snowpack. Faceted weak layers exist in the old snowpack in particular in areas where the snow cover is rather shallow. The snowpack will become increasingly moist, especially on very steep sunny slopes below approximately 2800 m.

Tendency

Significant increase in danger of dry avalanches as a consequence of fresh snow and strong wind.

Danger Level 2 - Moderate

AM:



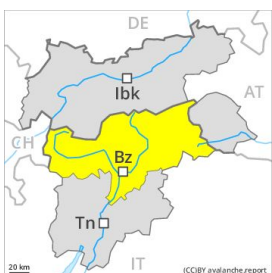
Tendency: Increasing avalanche danger
 on Saturday 04 01 2020



Persistent
weak layer



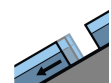
PM:



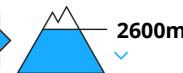
Tendency: Increasing avalanche danger
 on Saturday 04 01 2020



Persistent
weak layer



Gliding snow



The avalanche danger will increase during the day.

The older wind slabs can still be released especially on very steep northwest, north and southeast facing slopes. Caution is to be exercised at their margins in particular, in particular in gullies and bowls, and behind abrupt changes in the terrain. Avalanches can be released in deep layers in particular at transitions from a shallow to a deep snowpack. As a consequence of warming a sometimes precarious avalanche situation will persist. As the moisture increases small and medium-sized wet and gliding avalanches are possible below approximately 2600 m.

Snowpack

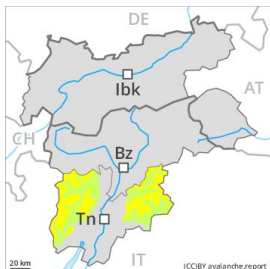
Weak layers in the old snowpack are difficult to recognise. The various wind slabs of last week can be released in isolated cases, but mostly only by large additional loads. They are to be found in particular adjacent to ridgelines and in gullies and bowls and at high altitudes. The various wind slabs have bonded quite well together. In little used backcountry terrain the avalanche situation is a little more dangerous. The old snowpack will become moist below approximately 2000 m.

Tendency

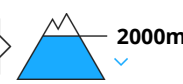
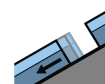
As a consequence of fresh snow and strong wind the prevalence and size of the avalanche prone locations will increase on Saturday. In the regions exposed to snowfall this applies in particular.

Danger Level 2 - Moderate

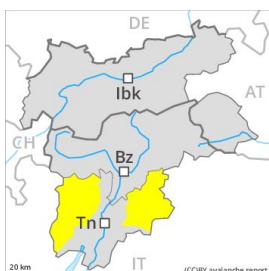
AM:



Tendency: Increasing avalanche danger
 on Saturday 04 01 2020



PM:



Tendency: Increasing avalanche danger
 on Saturday 04 01 2020



Moderate, level 2. Wind slabs require caution, especially at elevated altitudes adjacent to ridgelines.

The older wind slabs are mostly easy to recognise but to be assessed with care and prudence. Even single persons can release avalanches in isolated cases, including medium-sized ones, in particular adjacent to ridgelines and in pass areas. The avalanche prone locations are to be found also at transitions from a shallow to a deep snowpack above approximately 2200 m. In steep terrain there is a danger of falling on the icy crust. As a consequence of warming during the day and solar radiation individual small and, in isolated cases, medium-sized gliding avalanches and moist snow slides are possible. Ski touring and other off-piste activities, including snowshoe hiking, call for meticulous route selection, in particular on steep slopes above approximately 2000 m as well as on wind-loaded slopes.

Snowpack

The wind slabs have formed in particular in gullies and bowls, and behind abrupt changes in the terrain. The various wind slabs have bonded quite well already together. These are bonding only slowly with the old snowpack in particular on steep shady slopes and at high altitude. Faceted weak layers exist deep in the old snowpack in particular in areas where the snow cover is rather shallow. A clear night will be followed in the early morning by quite favourable conditions generally, but the danger of wet and gliding avalanches will increase later. The snowpack will be moist at low and intermediate altitudes.

Tendency

As a consequence of the sometimes strong northerly wind the prevalence and size of the avalanche prone locations will increase on Saturday. A latent danger of gliding avalanches exists, in particular on steep grassy slopes below approximately 2400 m.

Danger Level 2 - Moderate

AM:



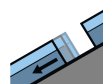
Tendency: Increasing avalanche danger
 on Saturday 04 01 2020



Wind-drifted snow



2400m



Gliding snow

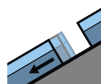


2600m

PM:



Tendency: Increasing avalanche danger
 on Saturday 04 01 2020



Gliding snow



2600m



Wind-drifted snow



2400m

Wind slabs require caution, especially adjacent to ridgelines. Temporary increase in danger of gliding avalanches.

The more recent wind slabs can be released, especially by large additional loads, in particular on northwest to north to northeast facing aspects above approximately 2400 m. Mostly avalanches are medium-sized. Slight increase in danger of dry avalanches as a consequence of the moderate to strong westerly wind. The avalanche prone locations are to be found in particular adjacent to ridgelines. They are clearly recognisable to the trained eye. The wind slabs in very steep terrain are to be bypassed. Transitions from a shallow to a deep snowpack are unfavourable.

Increase in danger of gliding avalanches as a consequence of warming during the day. Small and medium-sized gliding avalanches are to be expected. This applies in particular on steep grassy slopes, especially on east, south and west facing slopes below approximately 2600 m, but in isolated cases also on steep shady slopes below approximately 2400 m. As a consequence of warming during the day and solar radiation more small and, in isolated cases, medium-sized moist loose snow avalanches are possible, in particular on rocky slopes below approximately 2800 m.

Dry avalanches can in very isolated cases be released in the old snowpack by small loads. This applies in particular on very steep shady slopes between approximately 1900 and 2400 m.

Snowpack

Danger patterns

dp 6: cold, loose snow and wind

dp 2: gliding snow

The snowpack will be subject to considerable local variations at high altitudes and in high Alpine regions. The more recent wind slabs are lying on soft layers in particular on shady slopes at high altitudes and in high Alpine regions. The somewhat older wind slabs have bonded quite well with the old snowpack. Faceted weak layers exist in the old snowpack in particular in areas where the snow cover is rather shallow.



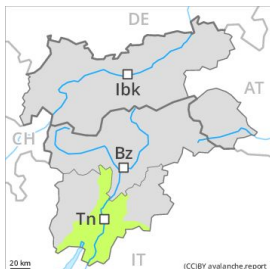
The snowpack will become increasingly moist, especially on very steep sunny slopes below approximately 2800 m.

Tendency

Significant increase in danger of dry avalanches as a consequence of fresh snow and strong wind.

Danger Level 2 - Moderate

AM:



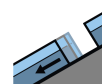
Tendency: Constant avalanche danger →
 on Saturday 04 01 2020



Wind-drifted snow



Treeline

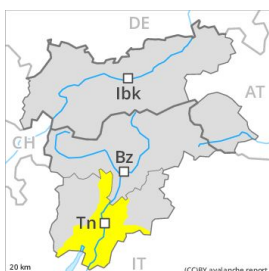


Gliding snow

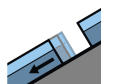


2000m

PM:



Tendency: Constant avalanche danger →
 on Saturday 04 01 2020



Gliding snow



2200m

1800m



Wind-drifted snow



Treeline

Wet snow requires caution, especially above the tree line on very steep grassy slopes.

The older wind slabs are mostly easy to recognise and can only be released in isolated cases, in particular adjacent to ridgelines and in pass areas. In steep terrain there is a danger of falling on the icy crust. As a consequence of warming during the day and solar radiation individual small and, in isolated cases, medium-sized gliding avalanches and moist snow slides are possible. Ski touring and other off-piste activities, including snowshoe hiking, call for meticulous route selection, in particular on steep slopes above approximately 2000 m as well as on wind-loaded slopes.

Snowpack

A clear night will be followed in the early morning by quite favourable conditions generally, but the danger of wet and gliding avalanches will increase later. The snowpack will be moist at low and intermediate altitudes. The wind slabs have formed in particular in gullies and bowls, and behind abrupt changes in the terrain. The various wind slabs have bonded quite well already with each other and the old snowpack.

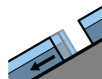
Tendency

A latent danger of gliding avalanches exists, in particular on steep sunny slopes.

Danger Level 1 - Low



Tendency: Constant avalanche danger →
on Saturday 04 01 2020



Gliding snow



Gliding snow requires caution.

A danger of gliding avalanches and moist snow slides exists. This applies in particular on steep grassy slopes, especially on east, south and west facing slopes, but in isolated cases also on steep shady slopes. Areas with glide cracks are to be avoided. Small to medium-sized gliding avalanches are to be expected. As a consequence of warming during the day and solar radiation more small and, in isolated cases, medium-sized moist loose snow avalanches are possible.

The more recent wind slabs can be released in isolated cases, but mostly only by large additional loads, in particular on extremely steep shady slopes at high altitude. Restraint should be exercised because avalanches can sweep people along and give rise to falls. The avalanche prone locations are clearly recognisable to the trained eye.

Snowpack

Danger patterns

dp 2: gliding snow

The various wind slabs have bonded generally well together. The snowpack will become increasingly stable. This also applies at high altitude. The snowpack will become increasingly moist, in particular on very steep sunny slopes.

Tendency

Significant increase in danger of dry avalanches as a consequence of fresh snow and strong wind.