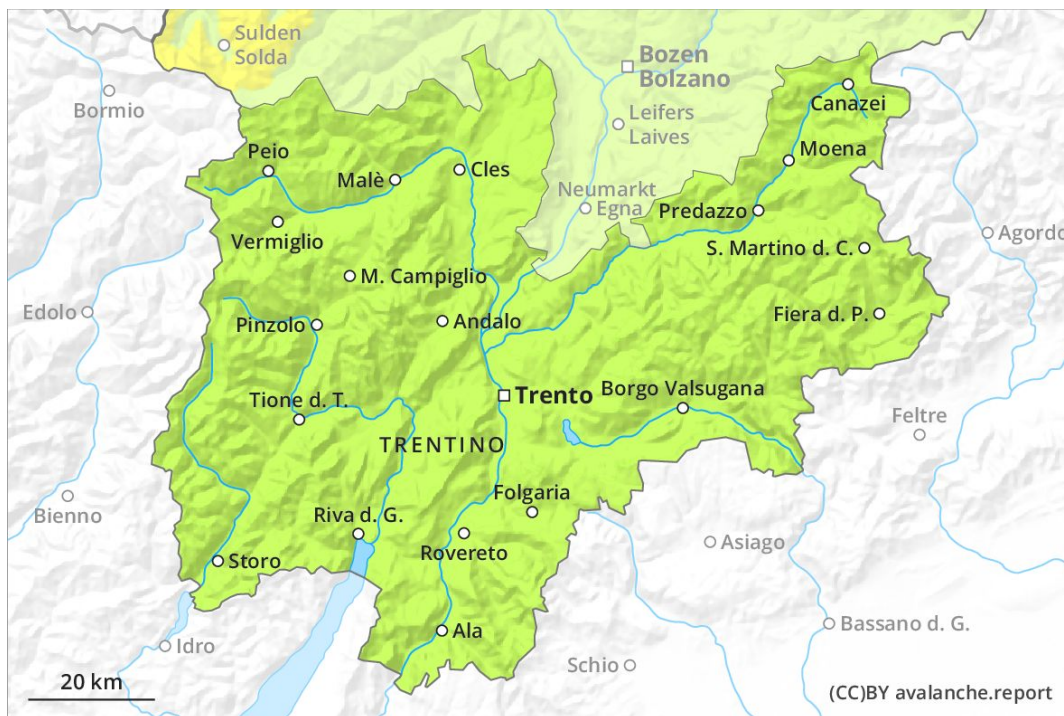
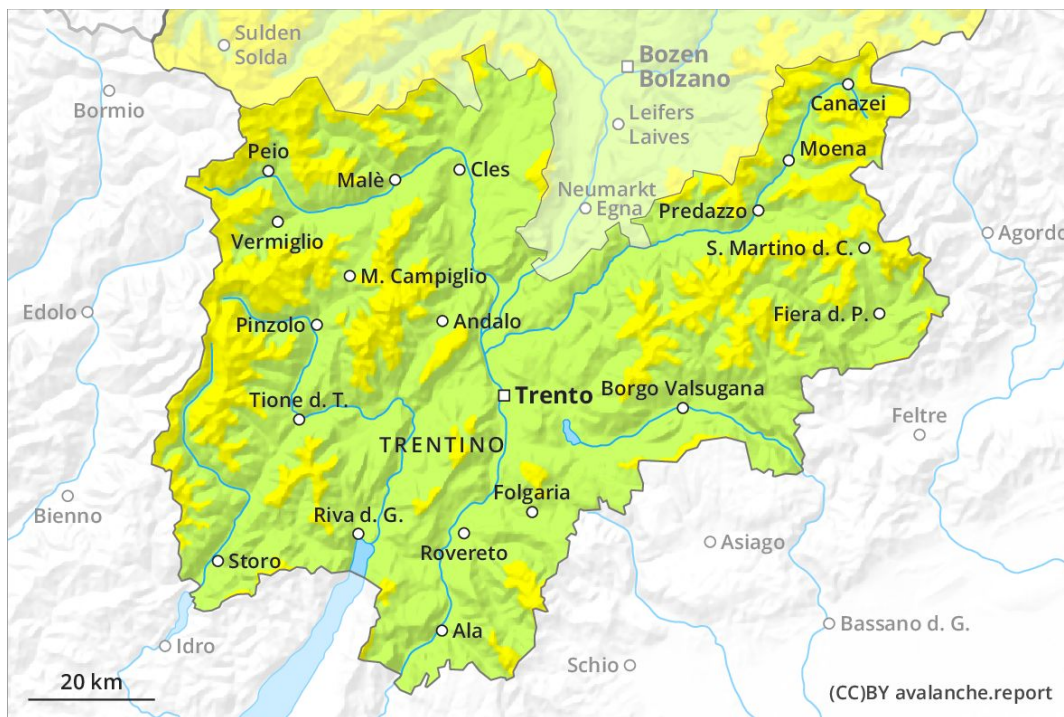


AM

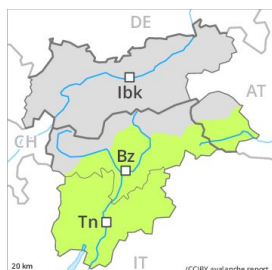


PM



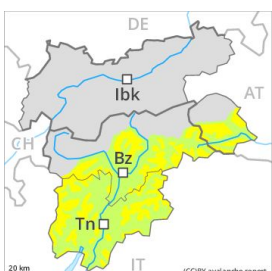
Danger Level 2 - Moderate

AM:



Tendency: Constant avalanche danger →
 on Tuesday 11 02 2020

PM:



Tendency: Constant avalanche danger →
 on Tuesday 11 02 2020



Wind-drifted
 snow



Treeline

The backcountry and freeriding conditions are generally favourable. Fresh wind slabs represent the main danger.

Fresh wind slabs require caution. The avalanche prone locations are to be found in particular on very steep shady slopes above approximately 1800 m and adjacent to ridgelines. These places are rare and are clearly recognisable to the trained eye. The avalanches are rather small. In addition a low (level 1) danger of moist snow slides exists. In the event of rain this applies. In steep terrain there is a danger of falling on the hard snow surface.

Snowpack

Danger patterns

dp 6: cold, loose snow and wind

The fresh wind slabs are in some cases prone to triggering in particular on very steep shady slopes above the tree line. These are mostly small. The wind will be storm force. The older wind slabs have bonded well with the old snowpack. The snowpack will be subject to considerable local variations.

Tendency

The avalanche danger will persist. Fresh wind slabs require caution.