



Danger Level 2 - Moderate



Tendency: Constant avalanche danger →
on Thursday 27 02 2020



Wind-drifted
snow



Wet snow



The backcountry touring conditions are mostly favourable. Little snow will fall in some localities.

The rather small wind slabs have bonded quite well with the old snowpack. These can only be released by large loads in most cases. The avalanche prone locations are to be found in particular on steep northwest to north to southeast facing slopes above approximately 2000 m, especially in gullies and bowls, and behind abrupt changes in the terrain. These places are clearly recognisable to the trained eye. In steep terrain there is a danger of falling on the icy crust.

Snowpack

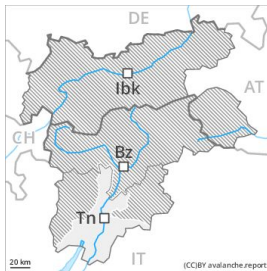
The fresh and somewhat older wind slabs are mostly small and can only be released in isolated cases. In some cases relatively hard layers of snow are lying on old snow containing large grains. Individual weak layers exist deep in the snowpack on shady slopes. The snowpack will be subject to considerable local variations. The surface of the snowpack will freeze to form a strong crust and will soften during the day. Below approximately 2000 m only a little snow is lying on south and southwest facing slopes.

Tendency

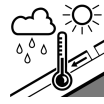
The avalanche danger will persist.



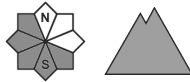
Danger Level 1 - Low



Tendency: Constant avalanche danger →
on Thursday 27 02 2020



Wet snow



The snowpack will be generally well bonded. The conditions are mostly favourable. Little snow will fall in some localities.

The rather small wind slabs have bonded quite well with the old snowpack. These can only be released by large loads in most cases. The avalanche prone locations are to be found in particular on steep northwest to north to southeast facing slopes, especially in gullies and bowls, and behind abrupt changes in the terrain. In steep terrain there is a danger of falling here. The early morning will see quite favourable conditions generally, but the avalanche danger will increase later.

Snowpack

Wind slabs are mostly small and can only be released in isolated cases. In some cases relatively hard layers of snow are lying on old snow containing large grains. Faceted weak layers exist deep in the snowpack on shady slopes. The snowpack will be subject to considerable local variations. The surface of the snowpack will freeze to form a strong crust and will soften during the day. On south and southwest facing slopes a little snow is lying in all altitude zones.

Tendency

The avalanche danger will persist.