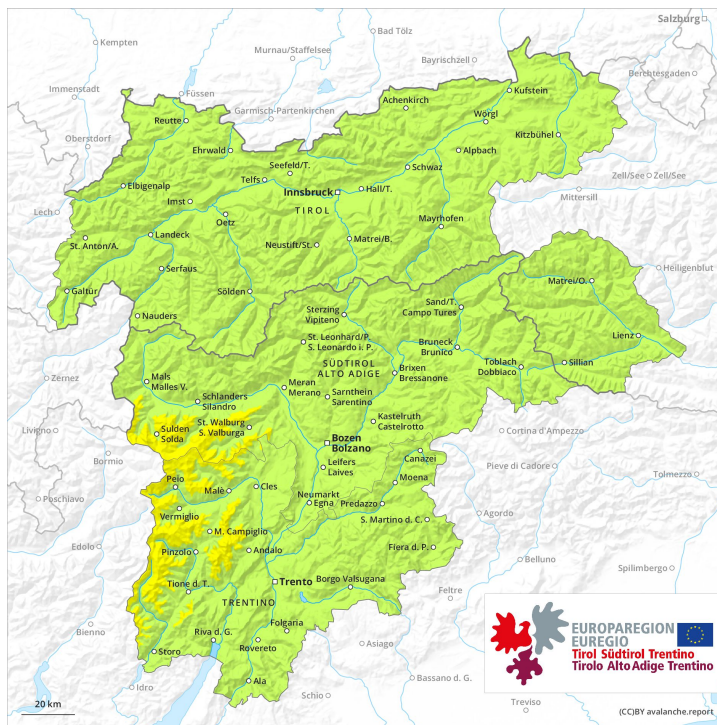
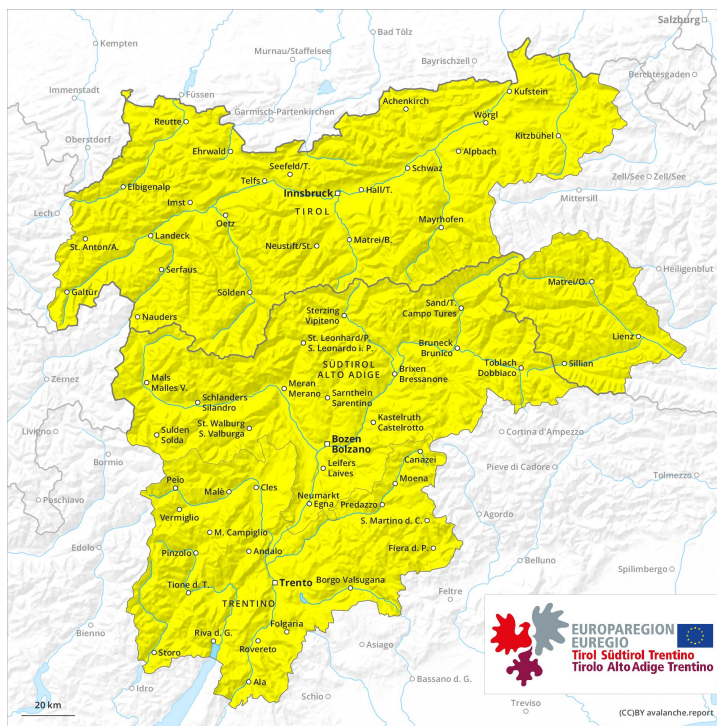




AM

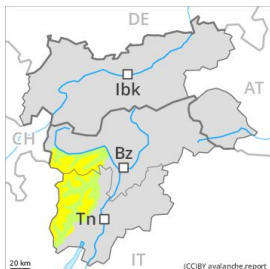


PM



Danger Level 2 - Moderate

AM:



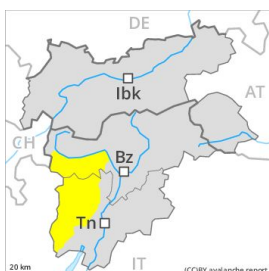
Tendency: Constant avalanche danger →
 on Wednesday 18 03 2020



Wind-drifted
 snow



PM:



Tendency: Constant avalanche danger →
 on Wednesday 18 03 2020



Wet snow



Wind-drifted
 snow



Wind slabs require caution. The danger of wet avalanches will increase during the day.

The Avalanche Warning Service currently has only a small amount of information that has been collected in the field, so that the avalanche danger should be investigated especially thoroughly in the relevant locality. As a consequence of a sometimes moderate southwesterly wind, small wind slabs formed in the last few days. This applies in particular adjacent to ridgelines and in gullies and bowls. Mostly the avalanches are rather small but in some cases easily released.

As a consequence of warming during the day and the solar radiation, the likelihood of moist and wet avalanches being released will increase gradually. Transportation routes situated at higher altitudes and exposed parts of transportation routes are endangered in some cases especially at intermediate and high altitudes.

Snowpack

Danger patterns

dp 10: springtime scenario

dp 6: cold, loose snow and wind

Outgoing longwave radiation during the night will be quite good over a wide area. The surface of the snowpack will freeze to form a strong crust and will soften earlier than the day before. At intermediate altitudes the snow is wet. Individual weak layers exist in the old snowpack. At low altitude no snow is lying.

Tendency

Increase in danger of wet avalanches as a consequence of warming during the day and solar radiation.

Danger Level 2 - Moderate

AM:



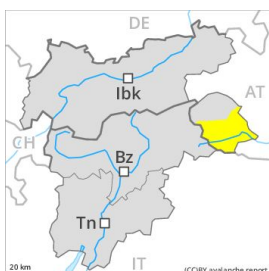
Tendency: Constant avalanche danger →
 on Wednesday 18 03 2020



Wind-drifted
 snow



PM:



Tendency: Constant avalanche danger →
 on Wednesday 18 03 2020



Wind-drifted
 snow



Wet snow



Tree line

Wet and gliding avalanches are to be expected from around the middle of the day. Wind slabs are in some cases prone to triggering above the tree line.

In the last few days mostly small wind slabs formed in particular adjacent to ridgelines. These are in isolated cases prone to triggering, especially on very steep shady slopes above the tree line adjacent to ridgelines.

These avalanche prone locations are very rare and are clearly recognisable to the trained eye. The avalanches are rather small but in some cases easily released.

Snowpack

Danger patterns

dp 10: springtime scenario

dp 6: cold, loose snow and wind

At low altitude no snow is lying. At intermediate altitudes the snow is wet. The somewhat older wind slabs have bonded well with the old snowpack in all aspects. Old wind slabs require caution.

Tendency

Slight increase in avalanche danger as a consequence of warming during the day and solar radiation.

Danger Level 2 - Moderate

AM:



Tendency: Constant avalanche danger →
 on Wednesday 18 03 2020



Wind-drifted
 snow



2400m

PM:



Tendency: Constant avalanche danger →
 on Wednesday 18 03 2020



Wind-drifted
 snow



2400m



Wet snow



2400m

Wind slabs are in some cases prone to triggering above the tree line. Wet and gliding avalanches are to be expected from around the middle of the day.

In the last few days rather small wind slabs formed in particular adjacent to ridgelines. These are in isolated cases prone to triggering. Caution is to be exercised in particular adjacent to ridgelines and in gullies and bowls. These avalanche prone locations are rather rare and are clearly recognisable to the trained eye. Mostly the avalanches are rather small.

Snowpack

Danger patterns

dp 6: cold, loose snow and wind

dp 10: springtime scenario

At low altitude no snow is lying. At intermediate altitudes the snow is wet. Outgoing longwave radiation during the night will be quite good. The fresh and somewhat older wind slabs have bonded well with the old snowpack in all aspects.

Tendency

Slight increase in avalanche danger as a consequence of warming during the day and solar radiation.

Danger Level 2 - Moderate

AM:



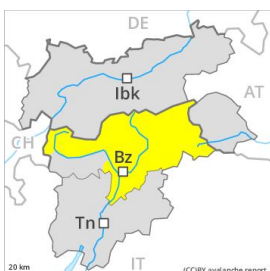
Tendency: Constant avalanche danger →
 on Wednesday 18 03 2020



Wind-drifted
 snow



PM:



Tendency: Constant avalanche danger →
 on Wednesday 18 03 2020



Wet snow



Wind-drifted
 snow



A favourable early-morning avalanche situation will prevail. The danger of wet avalanches will increase during the day.

The Avalanche Warning Service currently has only a small amount of information that has been collected in the field, so that the avalanche danger should be investigated especially thoroughly in the relevant locality. As a consequence of a sometimes moderate southwesterly wind, mostly small wind slabs formed in the last few days. These are in some cases still prone to triggering at high altitudes and in high Alpine regions, in particular adjacent to ridgelines and in gullies and bowls. Mostly the avalanches are rather small but in some cases easily released.

As a consequence of warming during the day and the solar radiation, the likelihood of moist and wet avalanches being released will increase gradually. Transportation routes situated at higher altitudes and exposed parts of transportation routes are endangered in some cases especially at intermediate and high altitudes.

Snowpack

Outgoing longwave radiation during the night will be quite good over a wide area. The surface of the snowpack will freeze to form a strong crust and will soften earlier than the day before. At intermediate altitudes the snow is wet. Individual weak layers exist in the old snowpack. At low altitude no snow is lying.

Tendency

Increase in danger of wet avalanches as a consequence of warming during the day and solar radiation.

Danger Level 2 - Moderate

AM:



Tendency: Constant avalanche danger →
 on Wednesday 18 03 2020



Wind-drifted
 snow



^ Treeline

PM:



Tendency: Constant avalanche danger →
 on Wednesday 18 03 2020



Wind-drifted
 snow



^ 2400m



Wet snow



2600m
 v

Wet and gliding avalanches are to be expected from around the middle of the day. Wind slabs are in individual cases still prone to triggering at high altitudes and in high Alpine regions.

In the last few days rather small wind slabs formed in particular adjacent to ridgelines. These are in some cases prone to triggering, especially adjacent to ridgelines and in gullies and bowls. Mostly the avalanches are rather small but in some cases easily released.

In addition the no longer entirely fresh wind slabs should be taken into account. These are in individual cases still prone to triggering. These avalanche prone locations are rather rare and are clearly recognisable to the trained eye.

Snowpack

Danger patterns

dp 10: springtime scenario

dp 6: cold, loose snow and wind

At low altitude no snow is lying. At intermediate altitudes the snow is wet. Outgoing longwave radiation during the night will be good. The fresh and somewhat older wind slabs have bonded well with the old snowpack in all aspects below approximately 2600 m.

In some places wind slabs are lying on soft layers. In very isolated cases weak layers exist in the old snowpack in particular on northwest, north and northeast facing slopes, especially above approximately 2600 m.

Tendency

Slight increase in avalanche danger as a consequence of warming during the day and solar radiation.

Danger Level 2 - Moderate

AM:



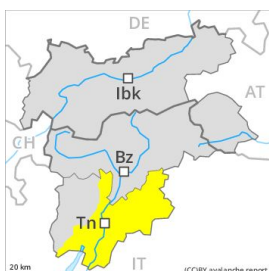
Tendency: Constant avalanche danger →
 on Wednesday 18 03 2020



Wind-drifted
 snow



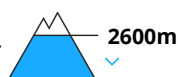
PM:



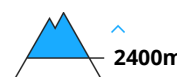
Tendency: Constant avalanche danger →
 on Wednesday 18 03 2020



Wet snow



Wind-drifted
 snow



A favourable early-morning avalanche situation will prevail. The danger of wet avalanches will increase during the day.

The Avalanche Warning Service currently has only a small amount of information about the snowpack, so that the avalanche danger should be investigated especially thoroughly in the relevant locality.

As a consequence of a sometimes moderate southwesterly wind, mostly small wind slabs formed in the last few days. The avalanches are small.

As a consequence of warming during the day and the solar radiation, the likelihood of moist and wet avalanches being released will increase gradually. Transportation routes situated at higher altitudes and exposed parts of transportation routes are endangered in some cases especially at intermediate and high altitudes.

Snowpack

Outgoing longwave radiation during the night will be quite good over a wide area. The surface of the snowpack will freeze to form a strong crust and will soften earlier than the day before. At intermediate altitudes the snow is wet. Individual weak layers exist in the old snowpack. At low altitude no snow is lying.

Tendency

Increase in danger of wet avalanches as a consequence of warming during the day and solar radiation.