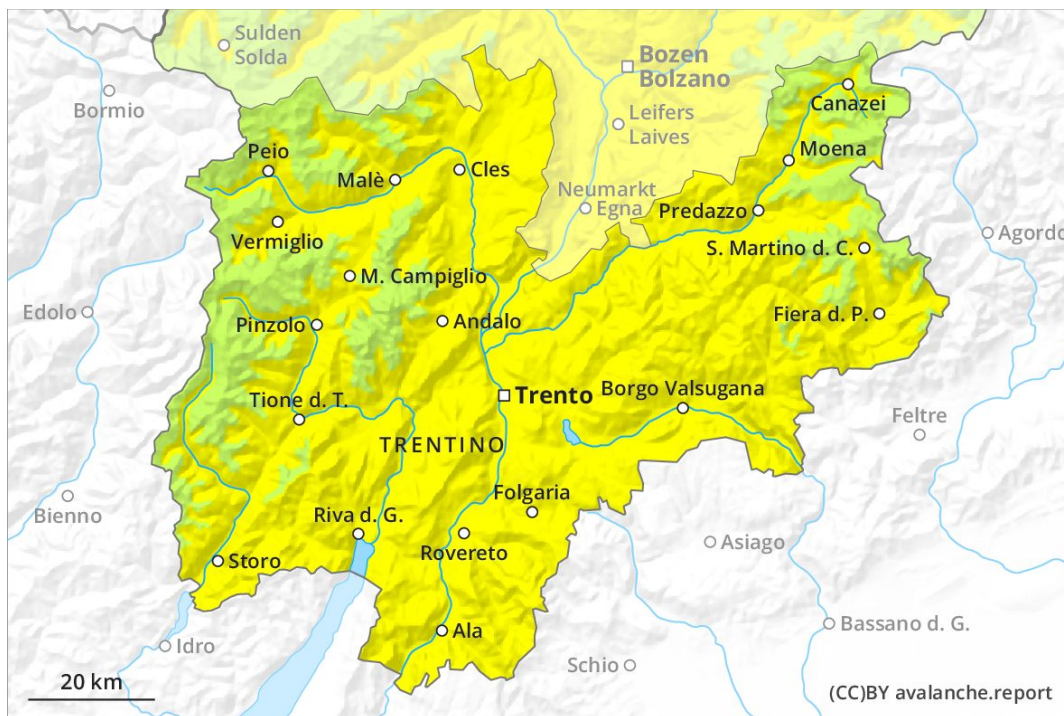
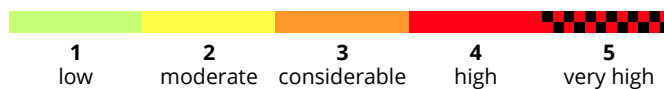
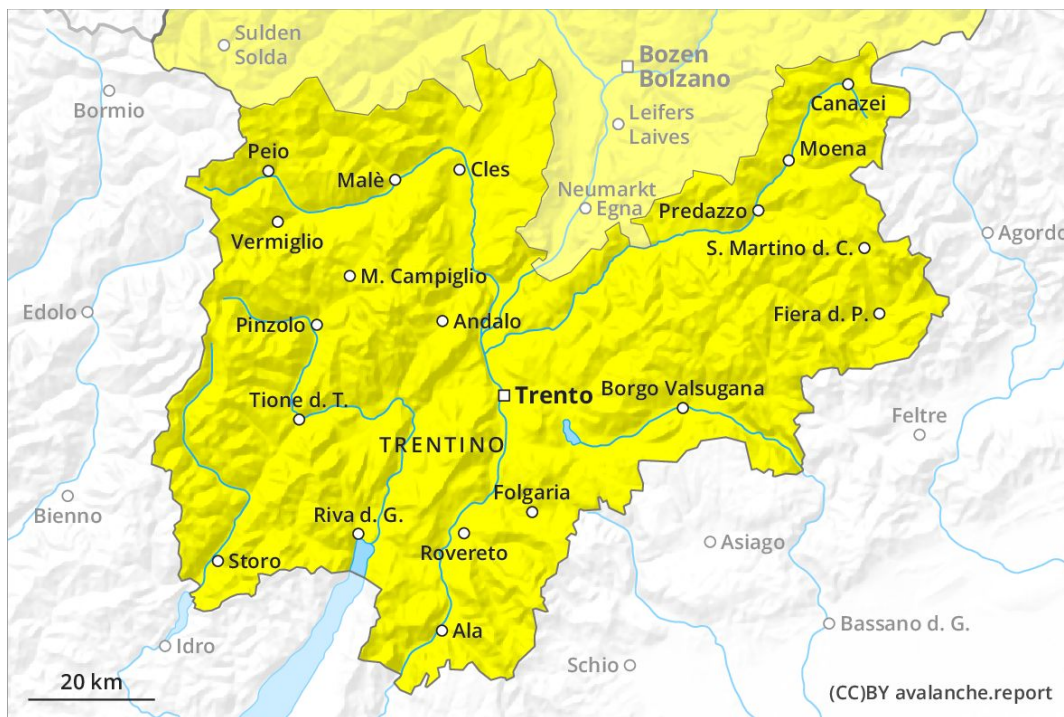




AM

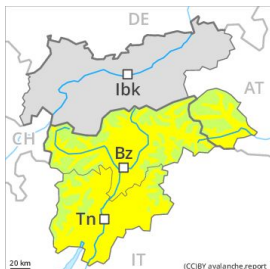


PM



Danger Level 2 - Moderate

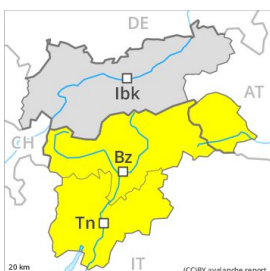
AM:



Tendency: Increasing avalanche danger
 on Sunday 22 03 2020



PM:



Tendency: Increasing avalanche danger
 on Sunday 22 03 2020



The danger of wet avalanches will already be elevated in the early morning.

The Avalanche Warning Service currently has only a small amount of information that has been collected in the field, so that the avalanche danger should be investigated especially thoroughly in the relevant locality. As a consequence of warming during the day and the solar radiation, the likelihood of wet avalanches being released will increase, in particular on steep sunny slopes. These can penetrate even deep layers and reach medium size. In addition gliding avalanches are possible. Transportation routes situated at higher altitudes and exposed parts of transportation routes are endangered in some cases especially at intermediate and high altitudes.

In very isolated cases avalanches can be triggered in the old snowpack and reach medium size. The avalanche prone locations are to be found in particular on very steep shady slopes.

Snowpack

Danger patterns

dp 10: springtime scenario

At low altitude no snow is lying. At intermediate altitudes the snow is wet. Outgoing longwave radiation during the night will be reduced in some case. The surface of the snowpack has frozen to form a strong crust only at high altitudes and will soften quickly. Weak layers exist in the old snowpack.

Tendency

Slight increase in avalanche danger as a consequence of the precipitation.