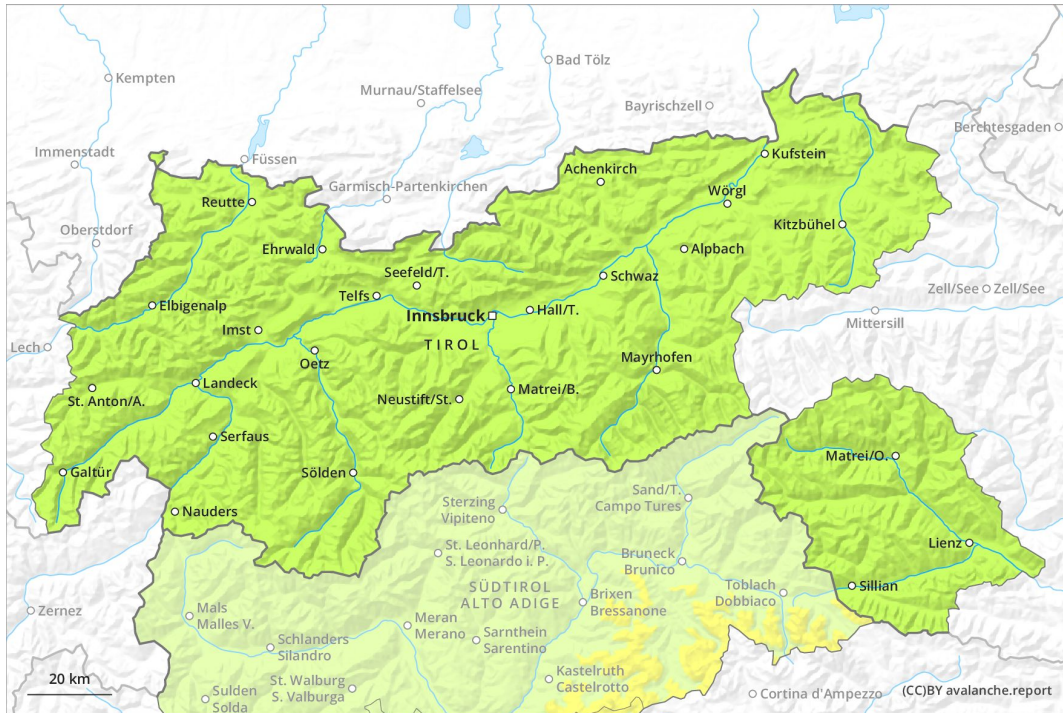
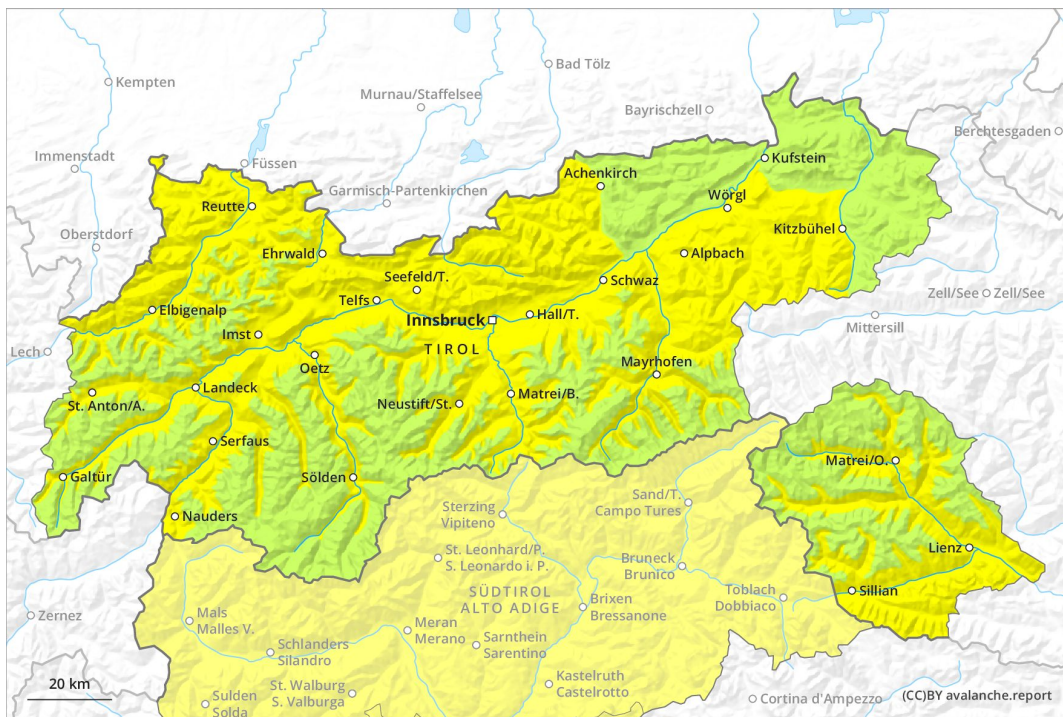




AM



PM



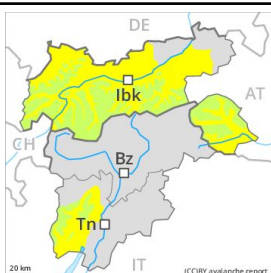
Danger Level 2 - Moderate

AM:

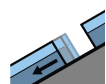


Tendency: Constant avalanche danger →
 on Sunday 05 04 2020

PM:



Tendency: Constant avalanche danger →
 on Sunday 05 04 2020



Gliding snow



2600m



Wet snow



2600m

Gradual increase in avalanche danger as a consequence of warming during the day and solar radiation.

The Avalanche Warning Service currently has only a small amount of information that has been collected in the field.

The avalanche conditions in the morning are favourable.

Midday and afternoon: Gradual increase in avalanche danger as a consequence of warming during the day and solar radiation. Gliding avalanches and wet snow slides are the main danger. The avalanche prone locations are to be found in particular on very steep sunny slopes below approximately 2600 m. These places are rather rare and are easy to recognise.

In addition a low (level 1) danger of dry slab avalanches exists. This applies in particular on extremely steep shady slopes above approximately 2400 m. The avalanches are rather small and can be released by large loads.

Snowpack

Danger patterns

dp 2: gliding snow

dp 10: springtime scenario

Outgoing longwave radiation during the night will be quite good. The snowpack will become moist as the day progresses. This applies in particular on sunny slopes.

The somewhat older wind slabs are lying on weak layers in particular on shady slopes at high altitude. Such avalanche prone locations are rare.

The old snowpack will be in most cases stable. At intermediate altitudes hardly any snow is lying. At low altitude no snow is lying.

Tendency

Gradual increase in danger of dry and moist avalanches as a consequence of warming during the day and



solar radiation.



Danger Level 1 - Low



Tendency: Constant avalanche danger →
on Sunday 05 04 2020

Slight increase in avalanche danger as a consequence of warming during the day and solar radiation.

The Avalanche Warning Service currently has only a small amount of information that has been collected in the field. The avalanche conditions in the morning are favourable.

Midday and afternoon: Slight increase in avalanche danger as a consequence of warming during the day and solar radiation. Gliding avalanches and wet snow slides are the main danger. The avalanche prone locations are to be found in particular on very steep sunny slopes. These places are very rare and are easy to recognise.

Snowpack

Danger patterns

dp 10: springtime scenario

Outgoing longwave radiation during the night will be quite good. The snowpack will become moist as the day progresses. This applies in particular on sunny slopes. The old snowpack will be in most cases stable. At low altitude no snow is lying.

Tendency

Slight increase in danger of dry and moist avalanches as a consequence of warming during the day and solar radiation.