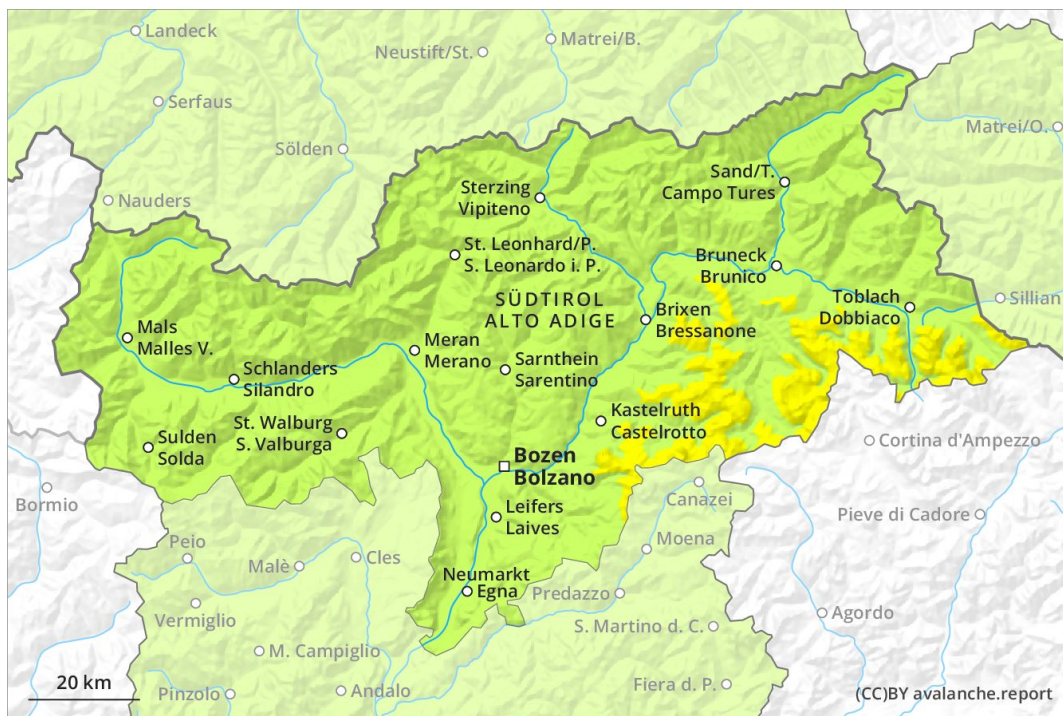
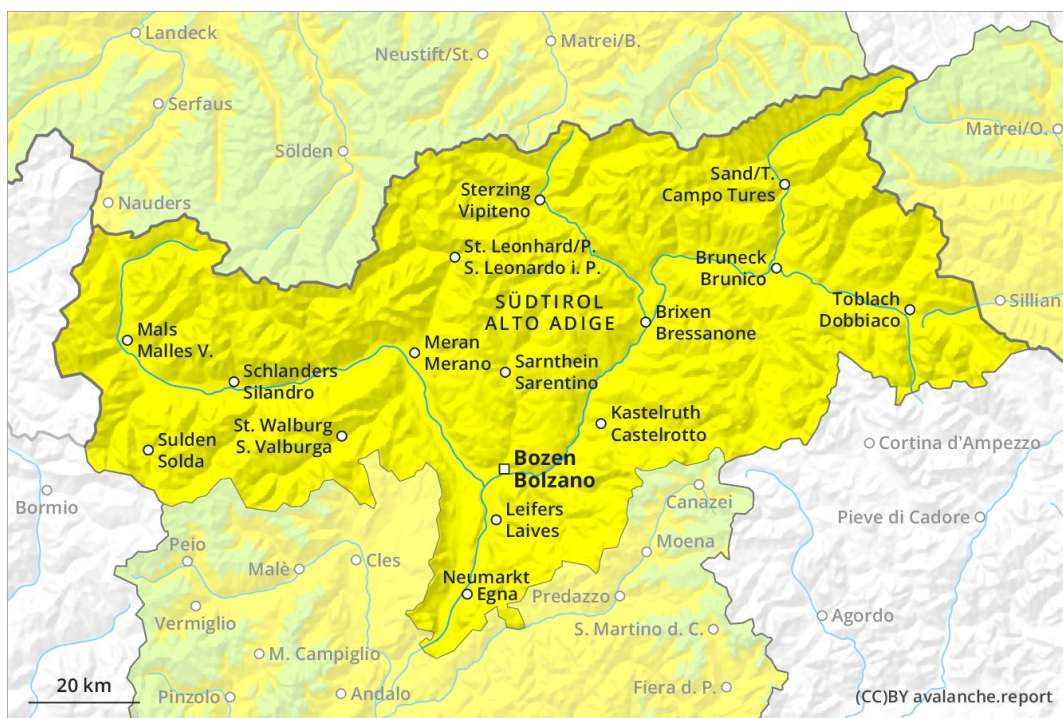




AM



PM



Danger Level 2 - Moderate

AM:



Tendency: Constant avalanche danger →
 on Monday 06 04 2020



Wind-drifted
 snow



PM:



Tendency: Constant avalanche danger →
 on Monday 06 04 2020



Wet snow



Wind-drifted
 snow



The danger of moist and wet avalanches will increase during the day.

The Avalanche Warning Service currently has only a small amount of information that has been collected in the field.

Early morning: More recent wind slabs represent the main danger. These can in some places be released, in particular by large loads and reach medium size.

During the day: As a consequence of warming during the day and the solar radiation, the likelihood of wet and gliding avalanches being released will increase gradually in all aspects. From origins in starting zones where no previous releases have taken place wet avalanches are possible as the day progresses, even quite large ones.

Snowpack

Danger patterns

dp 6: cold, loose snow and wind

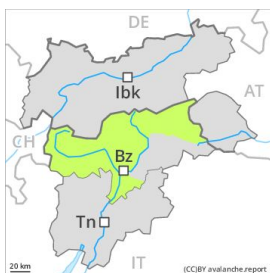
The surface of the snowpack will freeze to form a strong crust and will soften during the day. The fresh wind slabs are lying on weak layers in particular on shady slopes above the tree line. They remain in some cases prone to triggering in particular on very steep shady slopes. The weather will be mild.

Tendency

Further increase in danger of moist avalanches as a consequence of solar radiation.

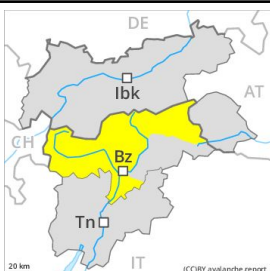
Danger Level 2 - Moderate

AM:



Tendency: Constant avalanche danger →
 on Monday 06 04 2020

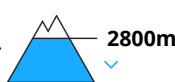
PM:



Tendency: Constant avalanche danger →
 on Monday 06 04 2020



Wet snow



Natural wet avalanches as the day progresses.

The Avalanche Warning Service currently has only a small amount of information that has been collected in the field.

The older wind slabs can in isolated cases be released, mostly by large loads and reach medium size. This applies in particular on very steep shady slopes as well as adjacent to ridgelines and in pass areas at high altitudes and in high Alpine regions.

As a consequence of warming during the day and the solar radiation, the likelihood of moist and wet avalanches being released will increase gradually. As the day progresses small and, in isolated cases, medium-sized moist and wet avalanches are possible below approximately 2800 m. From origins in starting zones where no previous releases have taken place moist and wet avalanches are possible, even quite large ones.

Snowpack

Danger patterns

dp 10: springtime scenario

Outgoing longwave radiation during the night will be good. The surface of the snowpack will freeze to form a strong crust and will soften during the day. The weather will be mild. Isolated avalanche prone weak layers exist in the old snowpack especially on very steep shady slopes.

Tendency

Increase in danger of wet and gliding avalanches as a consequence of warming during the day and solar radiation.