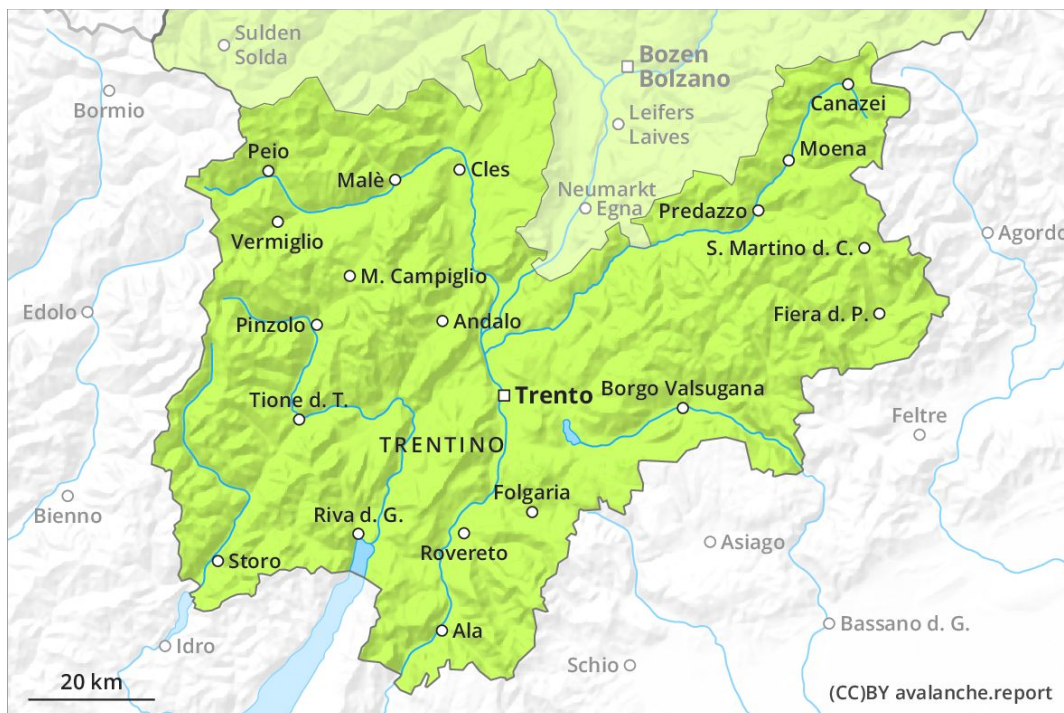
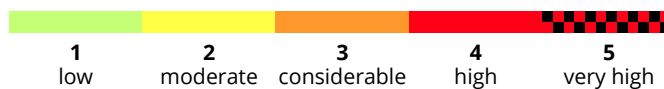
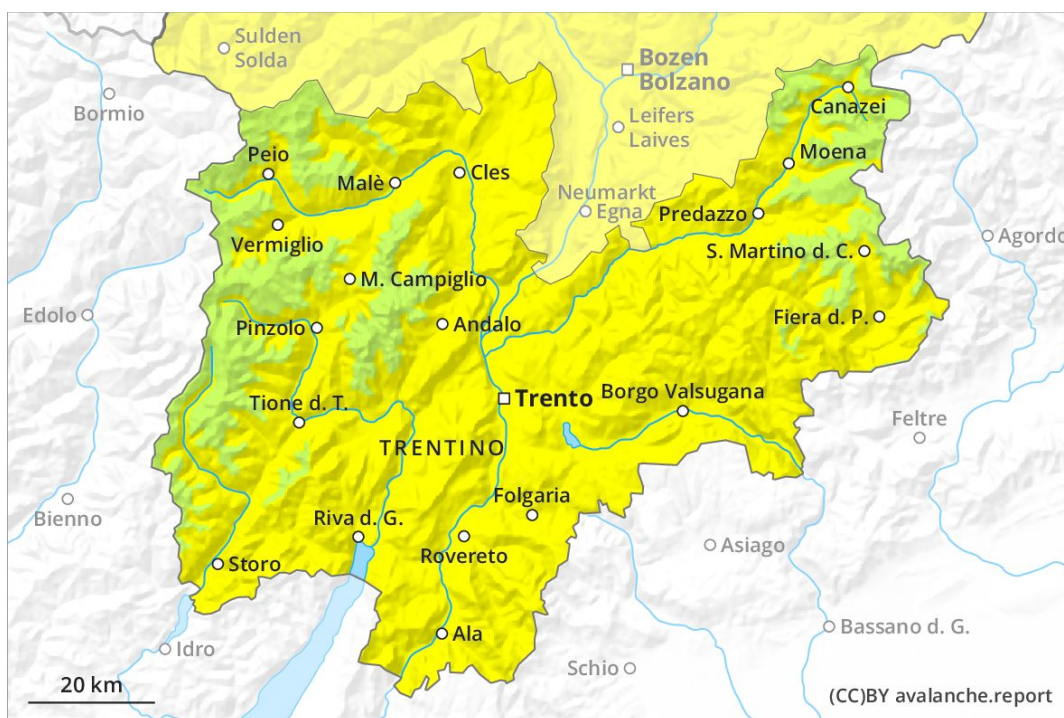




AM



PM



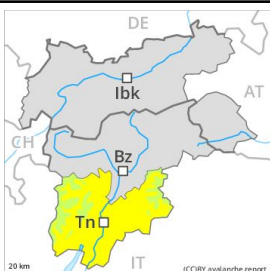
Danger Level 2 - Moderate

AM:



Tendency: Constant avalanche danger →
 on Tuesday 07 04 2020

PM:



Tendency: Constant avalanche danger →
 on Tuesday 07 04 2020



Wet snow



2800m



Gliding snow



2800m

Natural wet avalanches as the day progresses.

The Avalanche Warning Service currently has only a small amount of information that has been collected in the field.

Caution is to be exercised on very steep shady slopes as well as adjacent to ridgelines and in pass areas at high altitudes and in high Alpine regions.

As a consequence of warming during the day and the solar radiation, the likelihood of moist and wet avalanches being released will increase gradually. As the day progresses small and, in isolated cases, medium-sized moist and wet avalanches are possible below approximately 2800 m. From origins in starting zones where no previous releases have taken place moist and wet avalanches are possible, even quite large ones.

Exposed parts of transportation routes can be endangered occasionally in the regions with a lot of snow.

Snowpack

Danger patterns

dp 10: springtime scenario

dp 2: gliding snow

Isolated avalanche prone weak layers exist in the old snowpack especially on very steep shady slopes. Outgoing longwave radiation during the night will be good. The surface of the snowpack will freeze to form a strong crust and will soften during the day. The weather will be mild. As the penetration by moisture increases the prevalence and size of the avalanche prone locations will increase on Monday.

Tendency

Increase in danger of wet and gliding avalanches as a consequence of warming during the day and solar radiation.