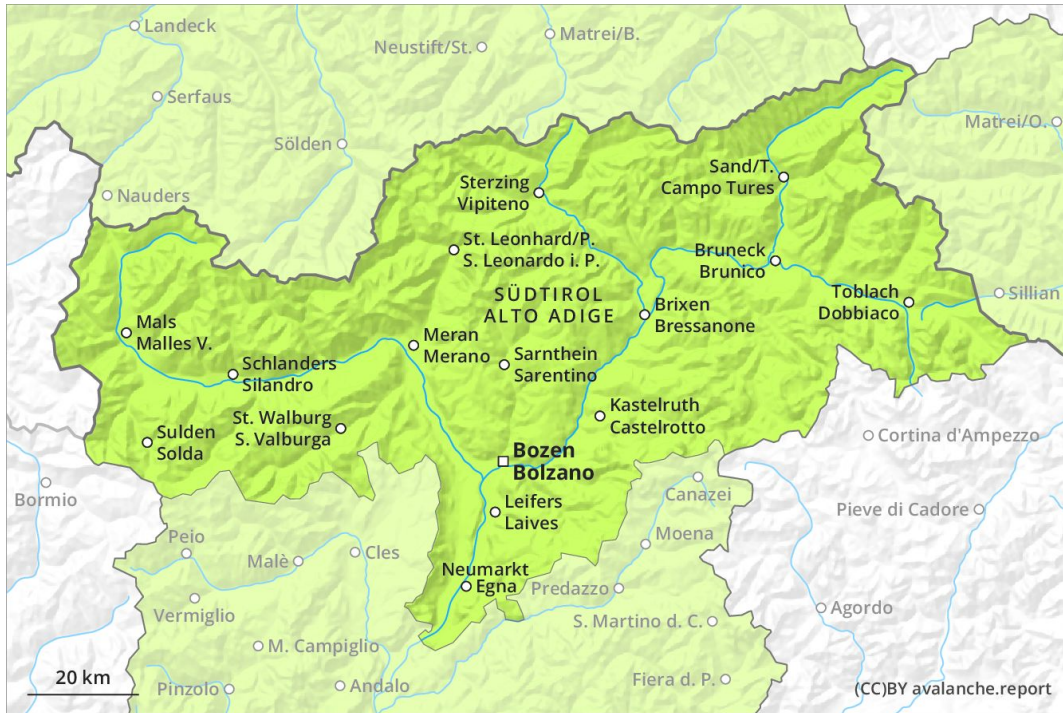
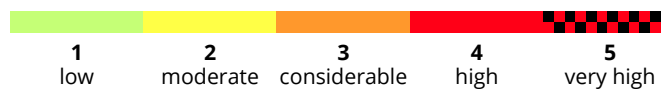
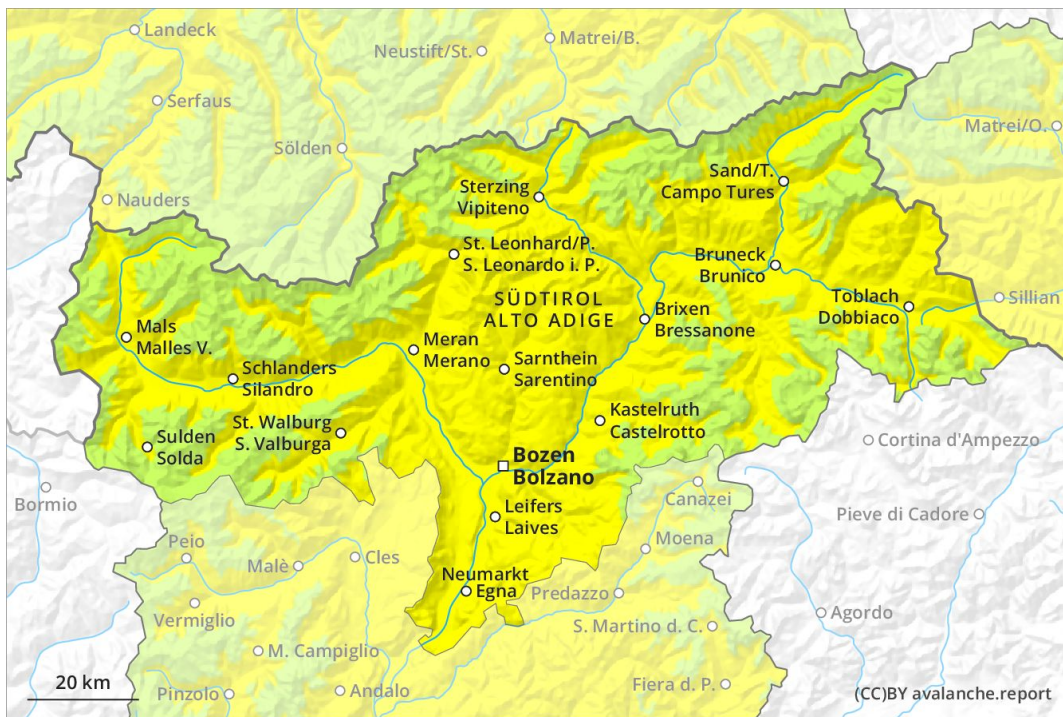




**AM**



**PM**



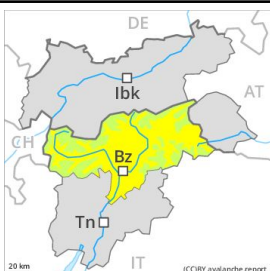
## Danger Level 2 - Moderate

**AM:**



**Tendency: Constant avalanche danger** →  
 on Wednesday 08 04 2020

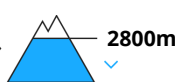
**PM:**



**Tendency: Constant avalanche danger** →  
 on Wednesday 08 04 2020



Wet snow



Moist and wet avalanches as the day progresses.

The Avalanche Warning Service currently has only a small amount of information that has been collected in the field.

As a consequence of warming during the day and solar radiation natural wet avalanches are possible below approximately 2800 m. In isolated cases these can penetrate even deep layers and reach large size. Exposed parts of transportation routes can be endangered occasionally in the regions with a lot of snow. In addition there is a danger of dry slab avalanches. This applies in particular in shady places that are protected from the wind above approximately 2400 m. Such avalanche prone locations are rather rare.

### Snowpack

**Danger patterns**

dp 10: springtime scenario

The surface of the snowpack has frozen to form a strong crust and will soften during the day. Isolated avalanche prone weak layers exist in the old snowpack especially on very steep shady slopes. At intermediate altitudes only a little snow is lying. At low altitude no snow is lying.

### Tendency

Increase in danger of wet and gliding avalanches as a consequence of warming during the day and solar radiation.