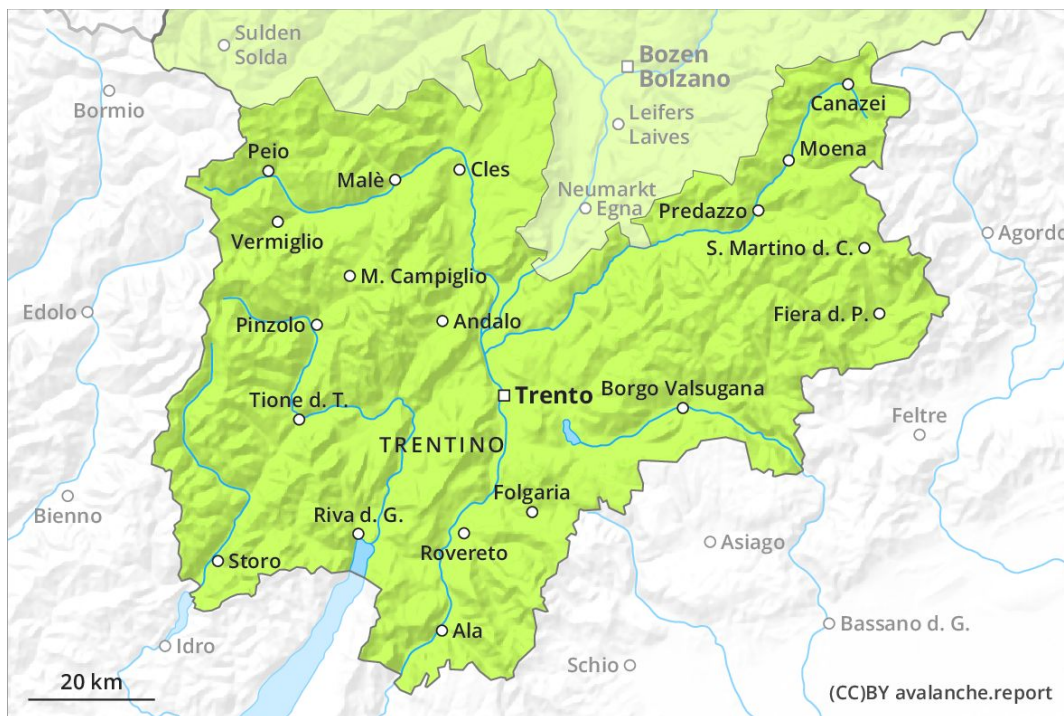
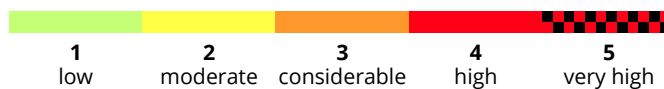
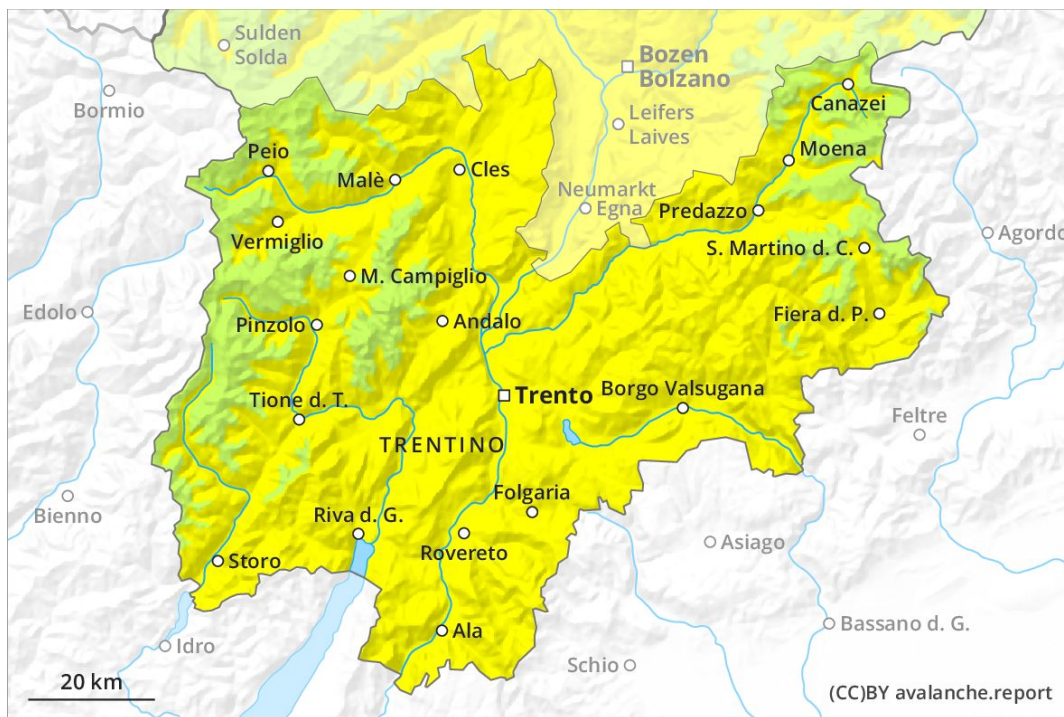




**AM**



**PM**

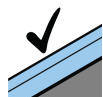


## Danger Level 2 - Moderate

**AM:**



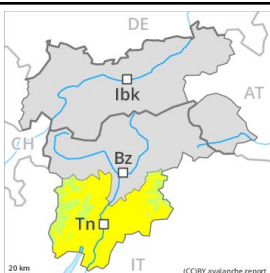
**Tendency: Constant avalanche danger** →  
 on Wednesday 08 04 2020



Favourable situation



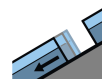
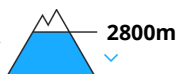
**PM:**



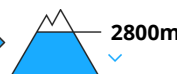
**Tendency: Constant avalanche danger** →  
 on Wednesday 08 04 2020



Wet snow



Gliding snow



### Natural wet avalanches in the afternoon.

The Avalanche Warning Service currently has only a small amount of information that has been collected in the field.

As a consequence of warming during the day and the solar radiation, the likelihood of moist and wet avalanches being released will increase gradually. As the day progresses small and, in isolated cases, medium-sized moist and wet avalanches are possible below approximately 2800 m. This also applies in isolated cases on very steep shady slopes as well as adjacent to ridgelines and in pass areas at high altitudes and in high Alpine regions.

From origins in starting zones where no previous releases have taken place moist and wet avalanches are possible, even quite large ones. Exposed parts of transportation routes can be endangered occasionally in the regions with a lot of snow.

### Snowpack

**Danger patterns**

dp 10: springtime scenario

dp 2: gliding snow

Outgoing longwave radiation during the night will be good. The surface of the snowpack will freeze to form a strong crust and will soften during the day.

Isolated avalanche prone weak layers exist in the old snowpack especially on very steep shady slopes.

On south and southwest facing slopes thus far only a little snow is lying below approximately 2000 m. At low altitude no snow is lying.

### Tendency

The weather will be mild. Increase in danger of wet and gliding avalanches as a consequence of warming during the day and solar radiation.