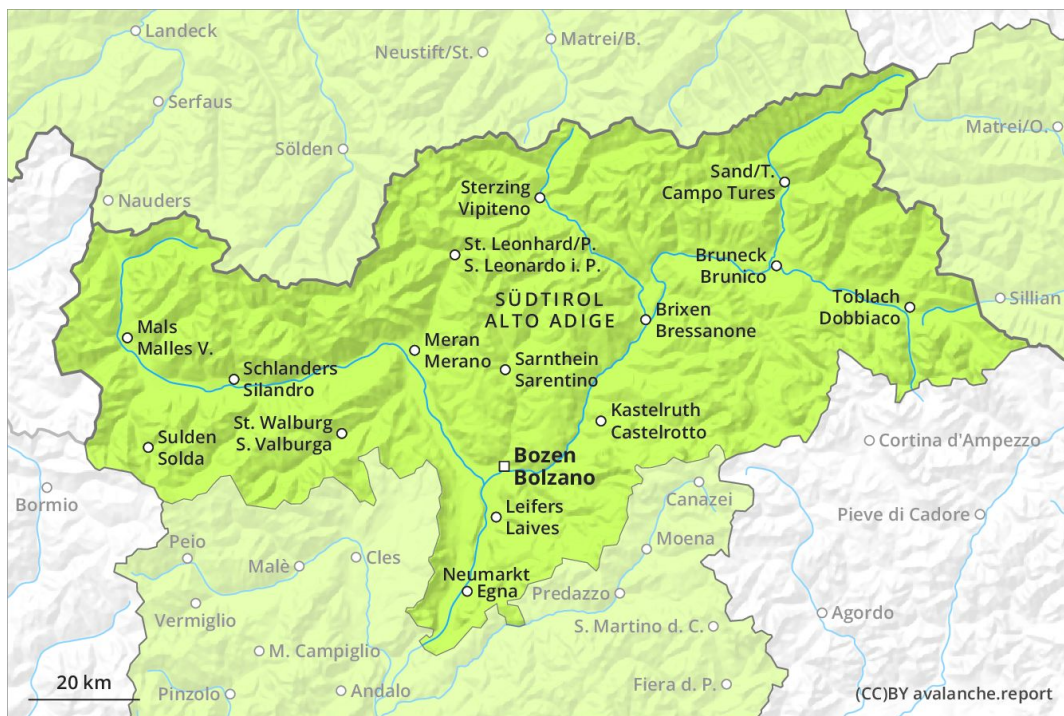
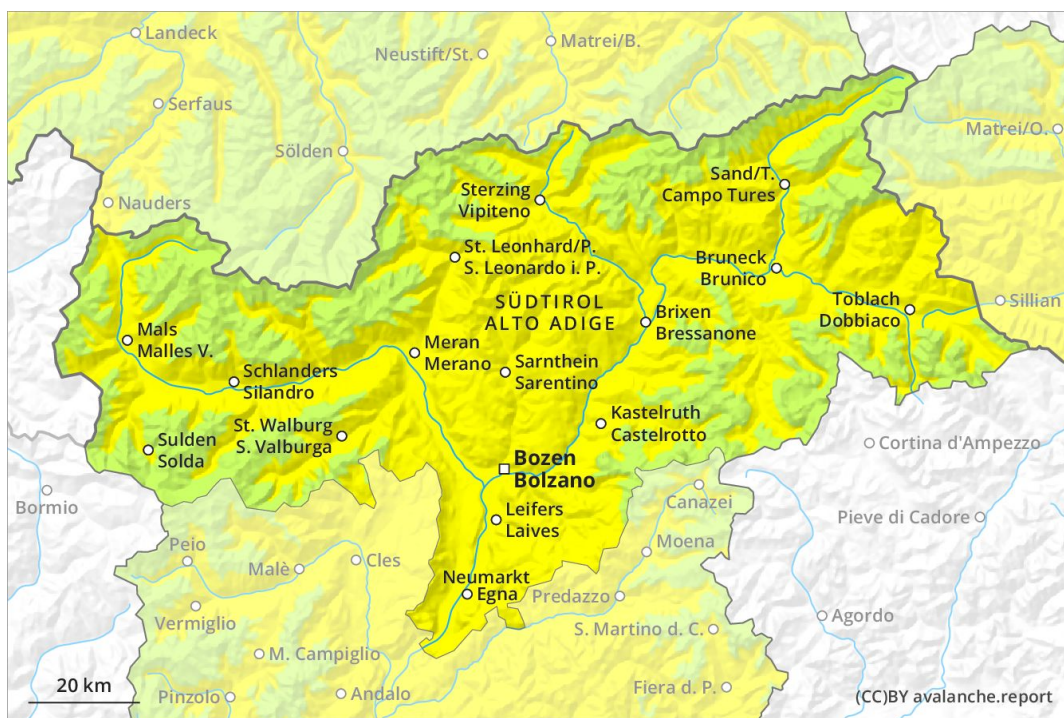




AM



PM



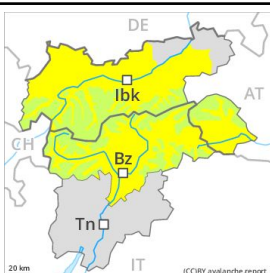
Danger Level 2 - Moderate

AM:

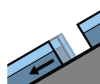


Tendency: Constant avalanche danger →
 on Friday 10 04 2020

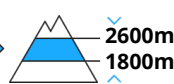
PM:



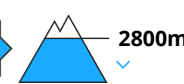
Tendency: Constant avalanche danger →
 on Friday 10 04 2020



Gliding snow



Wet snow



Slight increase in avalanche danger as a consequence of warming during the day and solar radiation. At low and intermediate altitudes hardly any snow is lying.

The Avalanche Warning Service currently has only a small amount of information that has been collected in the field.

Early and late morning: Low avalanche danger will prevail.

Midday and afternoon: Slight increase in avalanche danger as a consequence of warming during the day and solar radiation. Gliding avalanches and wet snow slides are the main danger. The avalanche prone locations are to be found in particular on very steep sunny slopes below approximately 2800 m. These places are rather rare and are easy to recognise.

In addition a low (level 1) danger of dry slab avalanches exists. This applies in particular on extremely steep shady slopes above approximately 2400 m. The avalanches are rather small and can be released by large loads.

Snowpack

Danger patterns

dp 2: gliding snow

dp 10: springtime scenario

The surface of the snowpack has frozen to form a strong crust will soften during the day. This applies in particular on sunny slopes.

In very isolated cases weak layers exist in the old snowpack on shady slopes, especially above approximately 2400 m in areas where the snow cover is rather shallow.

At intermediate altitudes hardly any snow is lying. At low altitude no snow is lying.

Tendency

Increase in danger of gliding avalanches and snow slides as a consequence of warming during the day and



solar radiation.