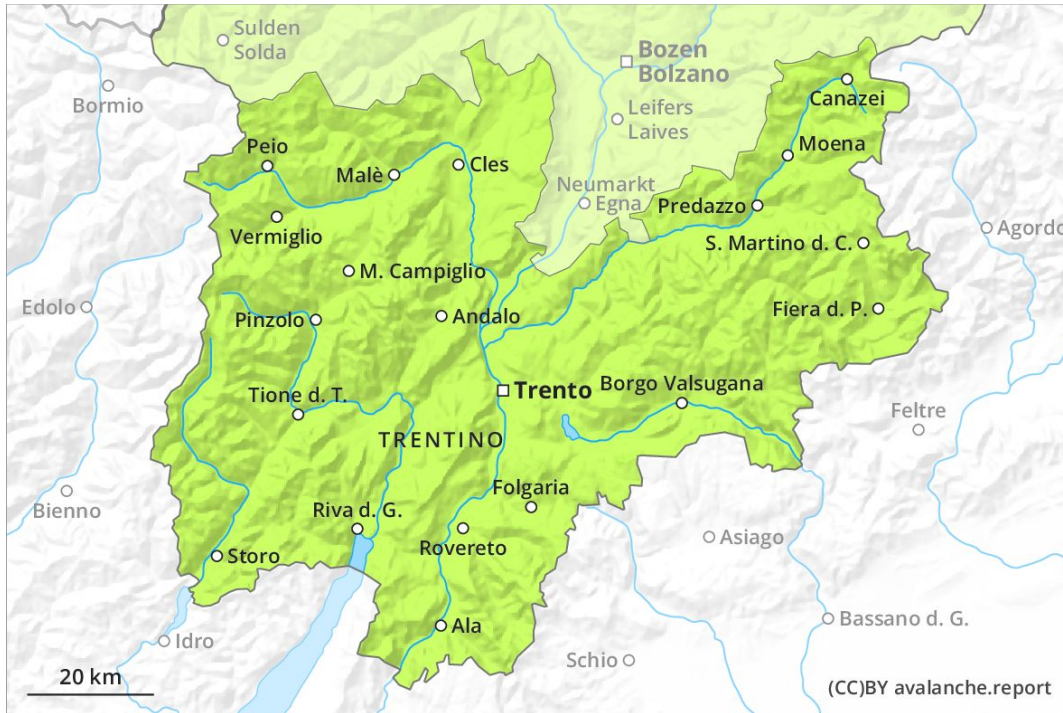
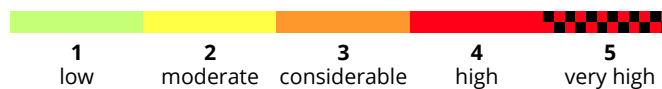
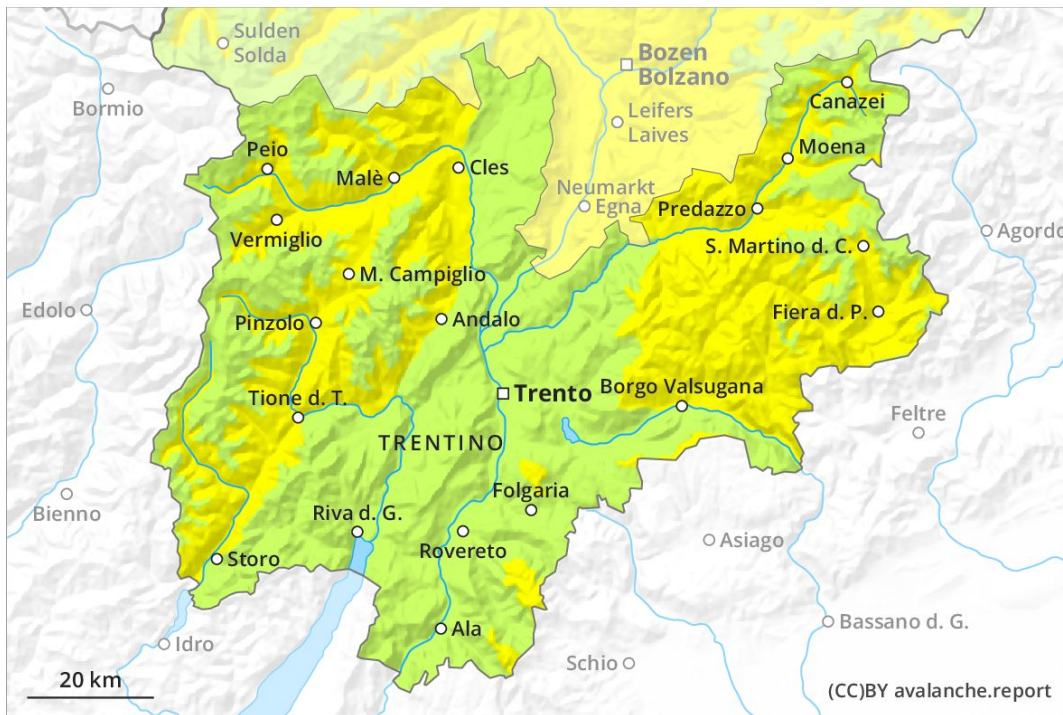




# AM



# PM



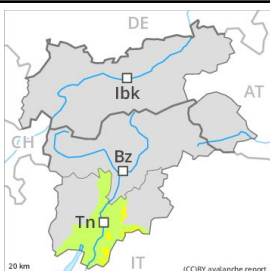
## Danger Level 2 - Moderate

**AM:**



**Tendency: Constant avalanche danger** →  
 on Saturday 11 04 2020

**PM:**



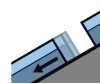
**Tendency: Constant avalanche danger** →  
 on Saturday 11 04 2020



Wet snow



2000m



Gliding snow



Treeline

At low and intermediate altitudes hardly any snow is lying. In some localities increase in avalanche danger as a consequence of warming during the day and solar radiation.

The Avalanche Warning Service currently has only a small amount of information that has been collected in the field. The avalanche conditions in the morning are favourable. Slight increase in avalanche danger as a consequence of warming during the day and solar radiation. Gliding avalanches and wet snow slides are the main danger. The avalanche prone locations are to be found in particular on steep shady slopes above approximately 1800 m, and adjacent to ridgelines and in gullies and bowls.

### Snowpack

**Danger patterns**

dp 10: springtime scenario

Outgoing longwave radiation during the night will be severely restricted. The surface of the snowpack will freeze to form a strong crust only at high altitudes and will soften during the day. Isolated avalanche prone weak layers exist in the old snowpack especially on very steep shady slopes. Below approximately 1700 m hardly any snow is lying.

### Tendency

The weather will be mild. Increase in danger of wet and gliding avalanches as a consequence of warming during the day and solar radiation.

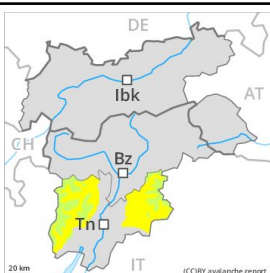
## Danger Level 2 - Moderate

**AM:**

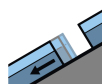


**Tendency: Constant avalanche danger** →  
 on Saturday 11 04 2020

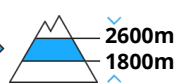
**PM:**



**Tendency: Constant avalanche danger** →  
 on Saturday 11 04 2020



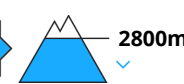
Gliding snow



2600m  
 1800m



Wet snow



2800m

Slight increase in avalanche danger as a consequence of warming during the day and solar radiation. At low and intermediate altitudes only a little snow is lying.

The Avalanche Warning Service currently has only a small amount of information that has been collected in the field. The avalanche conditions in the morning are favourable. Slight increase in avalanche danger as a consequence of warming during the day and solar radiation. Gliding avalanches and wet snow slides are the main danger. The avalanche prone locations are to be found in particular at the base of rock walls and on steep sunny slopes below approximately 2800 m, but in isolated cases also on shady slopes below approximately 2200 m.

From origins in starting zones where no previous releases have taken place moist and wet avalanches are possible, but they can be large in isolated cases.

## Snowpack

**Danger patterns**

dp 10: springtime scenario

The old snowpack will be generally well bonded. The surface of the snowpack will freeze to form a strong crust only at high altitudes and will soften during the day.

In very isolated cases weak layers exist in the old snowpack on shady slopes, especially above approximately 2400 m in areas where the snow cover is rather shallow.

At low and intermediate altitudes only a little snow is lying.

## Tendency

The weather will be mild. Increase in danger of gliding avalanches and snow slides as a consequence of warming during the day and solar radiation.