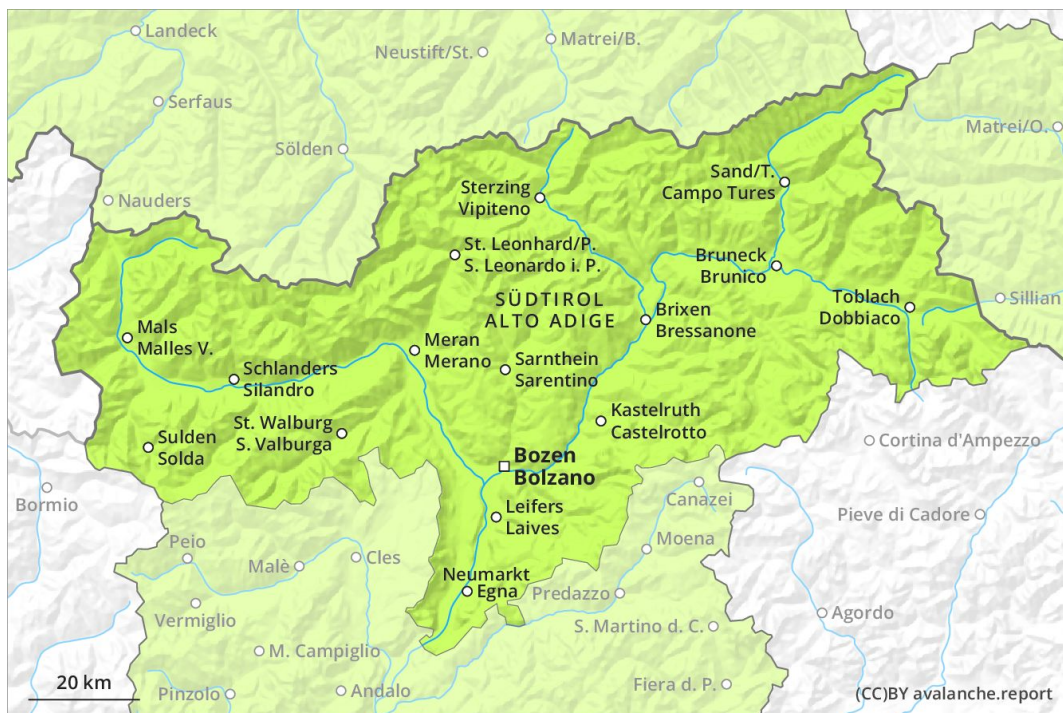
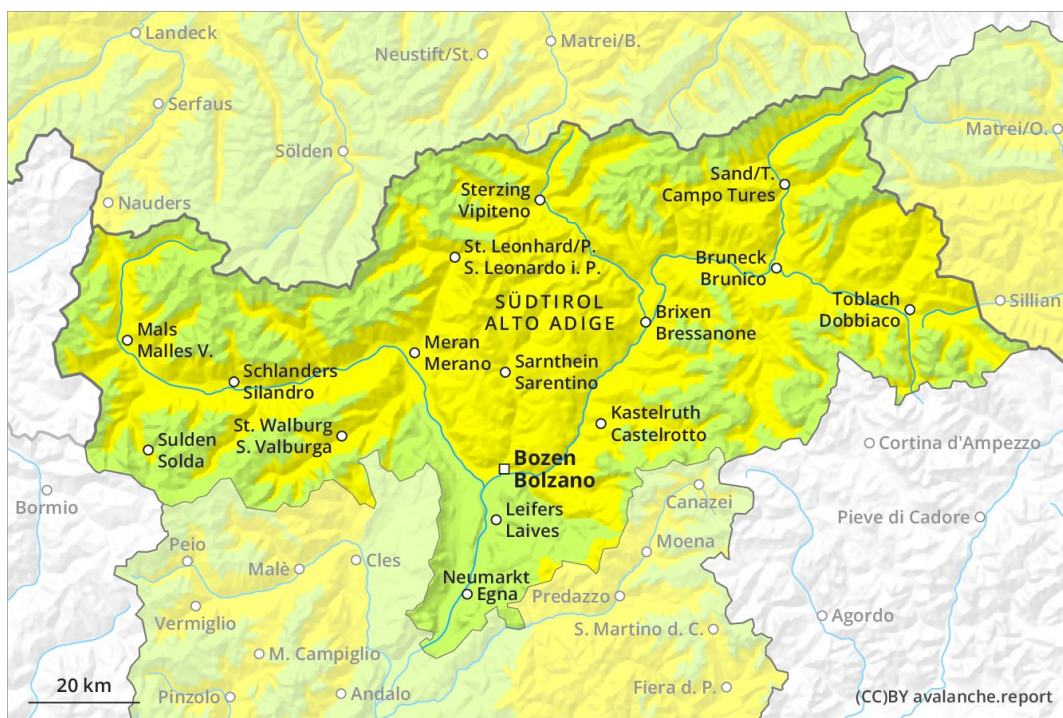




AM



PM



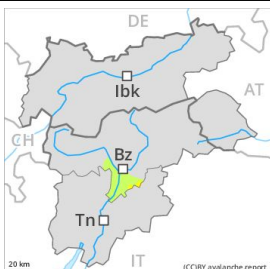
Danger Level 2 - Moderate

AM:



Tendency: Constant avalanche danger →
 on Monday 13 04 2020

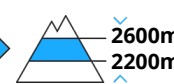
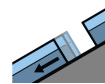
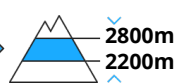
PM:



Tendency: Constant avalanche danger →
 on Monday 13 04 2020



Wet snow



Gliding snow

Increase in danger of gliding avalanches and wet snow slides as the day progresses.

The Avalanche Warning Service currently has only a small amount of information that has been collected in the field.

Early and late morning: Low avalanche danger will prevail.

Midday and afternoon: Slight increase in danger of gliding avalanches and wet snow slides as a consequence of warming during the day and solar radiation. The avalanche prone locations are to be found in particular on very steep sunny slopes below approximately 2800 m, but in isolated cases also on extremely steep shady slopes.

In addition a low (level 1) danger of dry slab avalanches exists. This applies in particular on extremely steep shady slopes above approximately 2400 m. The avalanches are only small and can only be released by large loads.

Snowpack

Danger patterns

dp 2: gliding snow

dp 10: springtime scenario

A generally clear night. The surface of the snowpack has frozen to form a strong crust and will already soften in the late morning. This applies in particular on sunny slopes.

In very isolated cases weak layers exist in the old snowpack on shady slopes, especially above approximately 2400 m in areas where the snow cover is rather shallow.

Below approximately 1700 m no snow is lying.

Tendency

A mostly overcast night: During the morning as well, individual gliding avalanches and moist snow slides are possible.

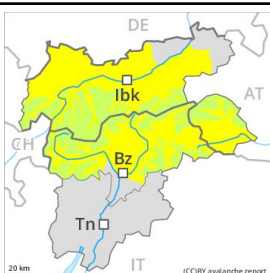
Danger Level 2 - Moderate

AM:

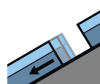


Tendency: Constant avalanche danger →
 on Monday 13 04 2020

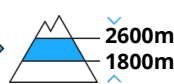
PM:



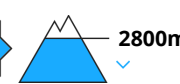
Tendency: Constant avalanche danger →
 on Monday 13 04 2020



Gliding snow



Wet snow



Increase in danger of wet and gliding avalanches as a consequence of warming during the day and solar radiation.

The Avalanche Warning Service currently has only a small amount of information that has been collected in the field.

Early and late morning: Low avalanche danger will prevail.

Midday and afternoon: Slight increase in avalanche danger as a consequence of warming during the day and solar radiation. Gliding avalanches and wet snow slides are the main danger. The avalanche prone locations are to be found in particular on very steep sunny slopes below approximately 2800 m, but in isolated cases also on extremely steep shady slopes below approximately 2200 m.

In addition a low (level 1) danger of dry slab avalanches exists. This applies in particular on extremely steep shady slopes above approximately 2400 m. The avalanches are rather small and can only be released by large loads.

Snowpack

Danger patterns

dp 2: gliding snow

dp 10: springtime scenario

A generally clear night. The surface of the snowpack has frozen to form a strong crust and will already soften in the late morning. This applies in particular on sunny slopes.

In very isolated cases weak layers exist in the old snowpack on shady slopes, especially above approximately 2400 m in areas where the snow cover is rather shallow.

At intermediate altitudes hardly any snow is lying. At low altitude no snow is lying.

Tendency

A mostly overcast night: During the morning as well, individual gliding avalanches and moist snow slides are possible.