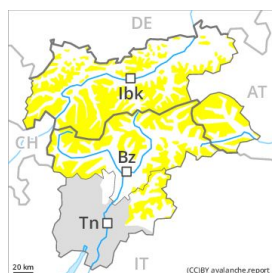


Danger Level 2 - Moderate



Tendency: Constant avalanche danger →

on Saturday 02 05 2020



Wet snow



Wind-drifted snow



The danger of wet avalanches will already exist in the early morning. High Alpine regions: Wind slabs require caution.

The Avalanche Warning Service currently has only a small amount of information that has been collected in the field. In the regions exposed to heavier precipitation and on steep sunny slopes small and, in isolated cases, medium-sized wet snow slides and avalanches are to be expected. As a consequence of warming during the day and the solar radiation, the likelihood of wet avalanches being released will increase above approximately 2000 m.

High Alpine regions: As a consequence of the moderate wind the previously small wind slabs will increase in size moderately. The avalanche prone locations are to be found in particular adjacent to ridgelines and in gullies and bowls in all aspects. The number and size of avalanche prone locations will increase with altitude.

Snowpack

Danger patterns

dp 10: springtime scenario

dp 6: cold, loose snow and wind

Over a wide area 5 to 15 cm of snow, and even more in some localities, will fall. Outgoing longwave radiation during the night will be barely evident. The snowpack will be moist from early morning. In some cases the various wind slabs have bonded still only poorly together. At low altitude no snow is lying.

Tendency

Hardly any decrease in avalanche danger.