



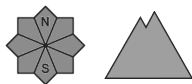
## Danger Level 4 - High



**Tendency: Constant avalanche danger** →  
on Monday 04 01 2021



New snow



A lot of new snow at low altitude: New snow and wind slabs represent the main danger.

On wind-loaded slopes a critical avalanche situation will be encountered over a wide area. As a consequence of new snow and a strong wind from southeasterly directions, avalanche prone wind slabs formed in the last two days in all aspects. They can be released easily in all aspects. Caution is to be exercised in particular adjacent to ridgelines and in gullies and bowls. Mostly the avalanches are medium-sized but in many cases easily released. Even single backcountry tourers can release avalanches in many places, including large ones, caution is to be exercised on steep slopes also below the tree line. The prevalence of avalanche prone locations and likelihood of triggering will increase with altitude. Whumpfung sounds and the formation of shooting cracks when stepping on the snowpack can indicate the danger. Caution and restraint are required.

## Snowpack

### Danger patterns

dp.6: cold, loose snow and wind

Over a wide area 50 to 80 cm of snow, and even more in some localities, has fallen since Saturday in all altitude zones. The southerly wind has transported the fresh and old snow. These avalanche prone locations are numerous and are barely recognisable, even to the trained eye. Over a wide area wind slabs are lying on soft layers. The new snow and wind slabs can be released easily or naturally in all aspects and in all altitude zones. The weather conditions will prevent a rapid change towards better conditions.

## Tendency

A precarious avalanche situation will be encountered over a wide area. These conditions will facilitate a slow decrease in the avalanche danger.



## Danger Level 3 - Considerable



**Tendency: Constant avalanche danger** →  
 on Monday 04 01 2021



Wind-drifted  
 snow



^  
 Treeline



New snow



^  
 Treeline

**A lot of new snow at low altitude: New snow and wind slabs represent the main danger.**

On wind-loaded slopes a critical avalanche situation will be encountered over a wide area. As a consequence of new snow and a strong wind from southeasterly directions, avalanche prone wind slabs formed in the last two days in all aspects. They can be released easily in all aspects. Caution is to be exercised in particular adjacent to ridgelines and in gullies and bowls. Mostly the avalanches are medium-sized but in many cases easily released. Even single backcountry tourers can release avalanches in many places, including large ones, caution is to be exercised on steep slopes also below the tree line. The prevalence of avalanche prone locations and likelihood of triggering will increase with altitude. Whumpfung sounds and the formation of shooting cracks when stepping on the snowpack can indicate the danger. Caution and restraint are required.

### Snowpack

**Danger patterns**

dp.6: cold, loose snow and wind

Over a wide area 30 to 50 cm of snow, and even more in some localities, has fallen since Saturday in all altitude zones. The southerly wind has transported the fresh and old snow. These avalanche prone locations are numerous and are barely recognisable, even to the trained eye. Over a wide area wind slabs are lying on soft layers. The new snow and wind slabs can be released easily or naturally in all aspects and in all altitude zones. The weather conditions will prevent a rapid change towards better conditions.

### Tendency

A precarious avalanche situation will be encountered over a wide area. These conditions will facilitate a slow decrease in the avalanche danger.