





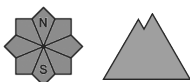
Danger Level 3 - Considerable



Tendency: Constant avalanche danger →
on Tuesday 05 01 2021



Wind-drifted
snow



Fresh wind slabs represent the main danger.

As a consequence of new snow and a strong wind from southeasterly directions, brittle wind slabs formed in all aspects, caution is to be exercised on steep slopes also below the tree line. Even single backcountry tourers can release avalanches in many places, including medium-sized ones.

The avalanche prone locations are prevalent and are difficult to recognise. Whumpfung sounds and the formation of shooting cracks when stepping on the snowpack can indicate the danger. Extensive experience in the assessment of avalanche danger and great restraint are required. Individual gliding avalanches can also occur.

Snowpack

Danger patterns

dp.6: cold, loose snow and wind

dp.8: surface hoar blanketed with snow

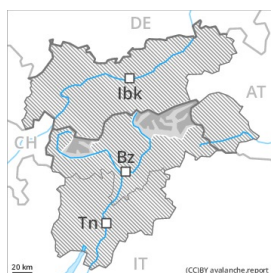
The southerly wind has transported the fresh and old snow. The new snow and wind slabs are lying on soft layers in all aspects and in all altitude zones. Towards its base, the snowpack is well consolidated. Stability tests and field observations confirm this situation. The weather conditions will prevent a rapid change towards better conditions.

Tendency

A sometimes critical avalanche situation will prevail.



Danger Level 3 - Considerable



Tendency: Constant avalanche danger →
 on Tuesday 05 01 2021



Wind-drifted
 snow



Treeline



Wind-drifted
 snow



Treeline

Backcountry touring calls for extensive experience and restraint.

On wind-loaded slopes a treacherous avalanche situation will be encountered over a wide area. The fresh and somewhat older wind slabs can be released easily in all aspects. Caution is to be exercised in particular adjacent to ridgelines and in gullies and bowls. Mostly the avalanches are only shallow. The avalanche prone locations are prevalent and are difficult to recognise.

Snowpack

Danger patterns

dp.6: cold, loose snow and wind

dp.8: surface hoar blanketed with snow

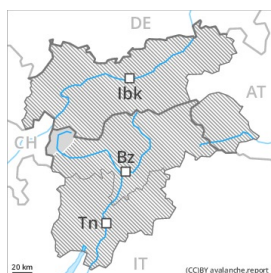
Over a wide area 10 to 20 cm of snow has fallen since Saturday. In some cases new snow and wind slabs are lying on surface hoar. As a consequence of a strong wind from southeasterly directions, easily released wind slabs formed in the last few days in all aspects. Avalanches can be released by small loads and reach medium size. Towards its base, the snowpack is largely stable.

Tendency

Hardly any decrease in avalanche danger. Wind slabs require caution.



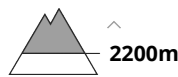
Danger Level 2 - Moderate



Tendency: Constant avalanche danger →
 on Tuesday 05 01 2021



Persistent
 weak layer



Wind-drifted
 snow



Treeline

Weak layers in the old snowpack are treacherous.

Weak layers in the lower part of the snowpack can be released in some places by individual winter sport participants, especially in areas where the snow cover is rather shallow, as well as at transitions from a shallow to a deep snowpack, when entering gullies and bowls for example. This applies especially on steep shady slopes above approximately 2200 m. In addition the sometimes avalanche prone wind slabs should be taken into account. They can be released by a single winter sport participant especially on steep shady slopes above the tree line, caution is to be exercised in particular adjacent to ridgelines and in gullies and bowls. Mostly the avalanches are medium-sized.

Snowpack

Danger patterns

dp.6: cold, loose snow and wind

dp.1: deep persistent weak layer

Steep shady slopes: The old snowpack will be prone to triggering in some places. Towards its base, the snowpack consists of faceted crystals. Towards its surface, the snowpack is unfavourably layered and its surface has a crust. In some places relatively hard layers of snow are lying on soft layers. The wind slabs are lying on surface hoar in some places at intermediate and high altitudes.

Tendency

Fresh and older wind slabs require caution.