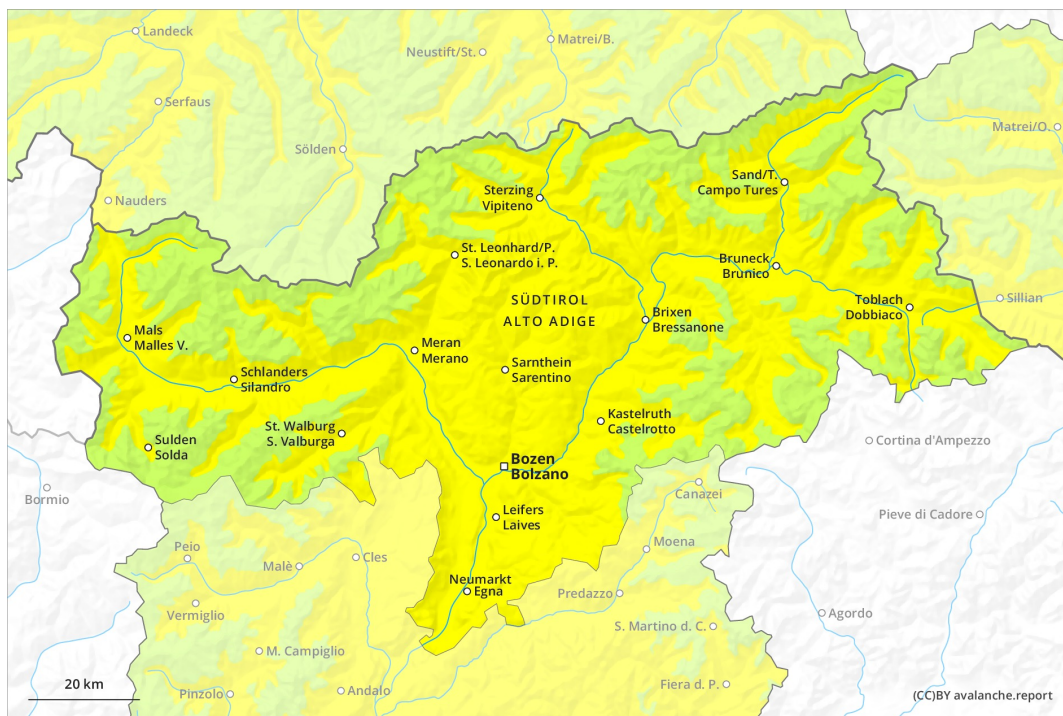
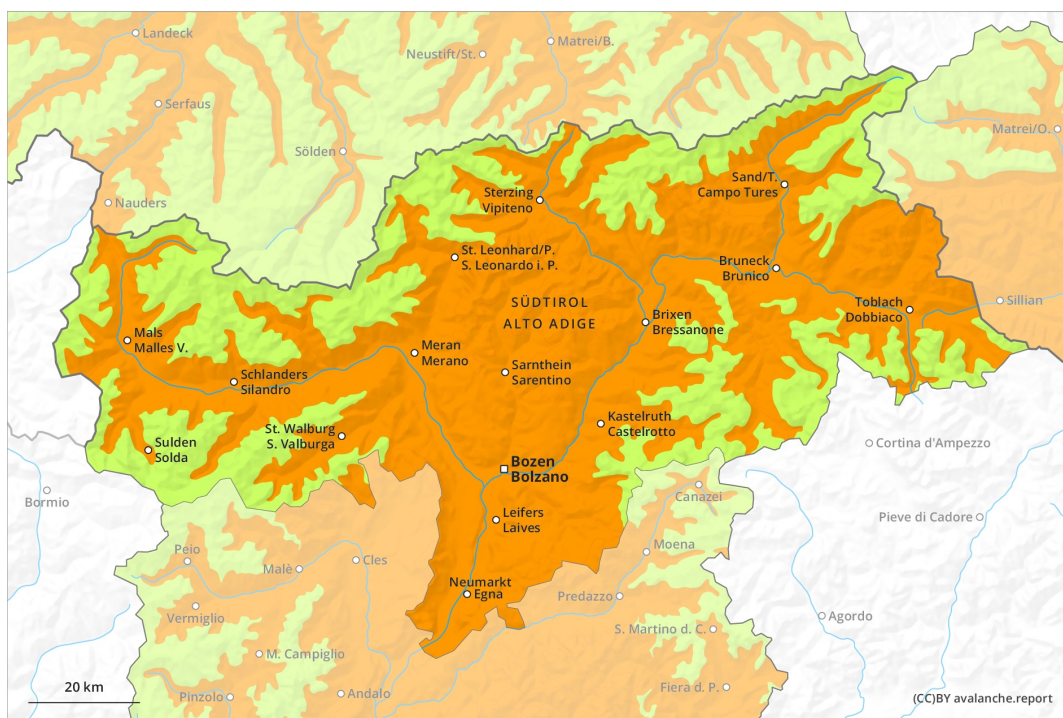




AM

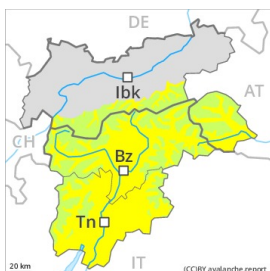


PM

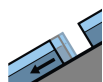


Danger Level 3 - Considerable

AM:



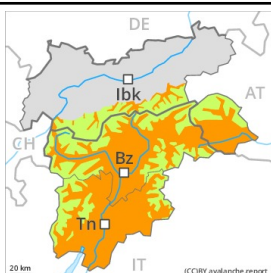
Tendency: Constant avalanche danger →
 on Saturday 27 02 2021



Gliding snow



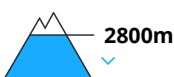
PM:



Tendency: Constant avalanche danger →
 on Saturday 27 02 2021



Wet snow



Wet avalanches as the day progresses.

As a consequence of warming during the day and solar radiation more wet and gliding avalanches are to be expected. This applies especially on very steep sunny slopes below approximately 2800 m, as well as on steep east and west facing slopes below approximately 2400 m. Avalanches can release the wet snowpack and reach large size. Exposed parts of transportation routes are endangered in isolated cases. Wet avalanches can in some places be released by a single winter sport participant. Backcountry tours should be concluded timely.

Dry avalanches can be released in deeper layers in very isolated cases, especially at transitions from a shallow to a deep snowpack. In addition the older wind slabs are prone to triggering in isolated cases still. The avalanche prone locations are to be found in particular on very steep shady slopes above approximately 2400 m and adjacent to ridgelines. Such avalanche prone locations are very rare.

Snowpack

Danger patterns

dp.10: springtime scenario

dp.2: gliding snow

Outgoing longwave radiation during the night will be good over a wide area. The snowpack is moist and its surface has a melt-freeze crust that is strong in many cases. The spring-like weather conditions will give rise to increasing and thorough wetting of the snowpack, in particular on steep sunny slopes below approximately 2800 m, as well as on shady slopes below approximately 2000 m. The surface of the snowpack will soften earlier than the day before, in particular on east and west facing slopes especially below approximately 2400 m.

Isolated avalanche prone weak layers exist in the centre of the snowpack on west, north and east facing slopes. As a consequence of mild temperatures and solar radiation the snow drift accumulations stabilised.

Tendency



Slight decrease in danger of wet avalanches as the temperature drops. In some regions strong foehn wind from the south.