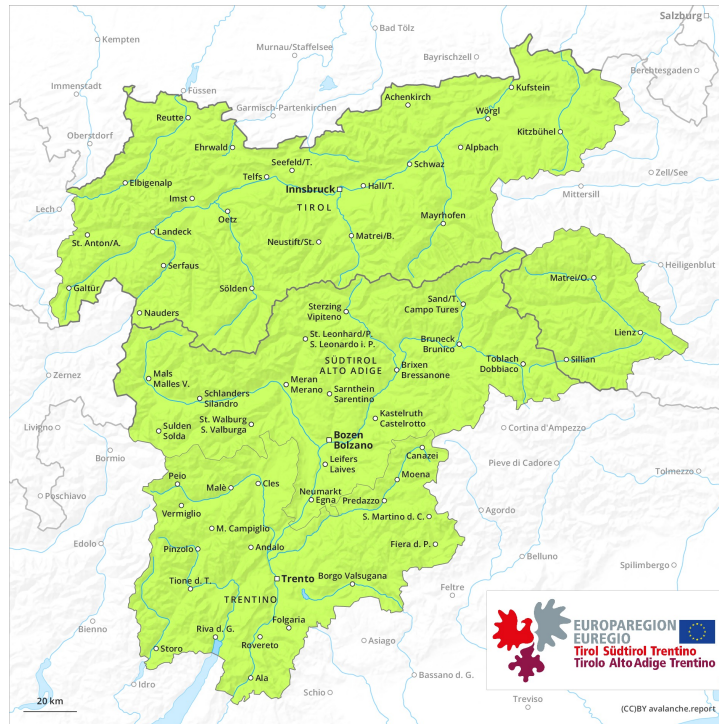
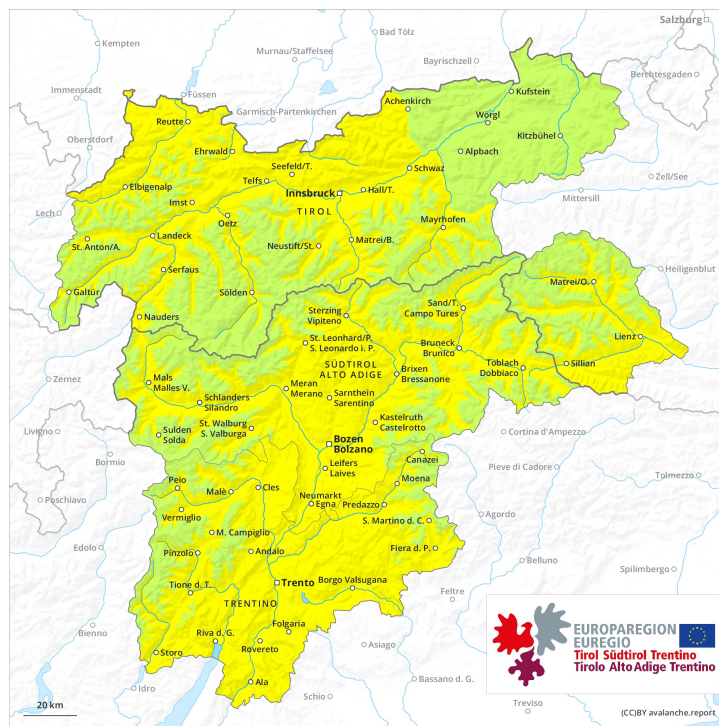




AM



PM

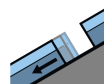


Danger Level 2 - Moderate

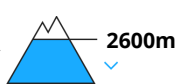
AM:



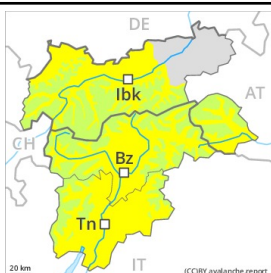
Tendency: Constant avalanche danger →
 on Thursday 04 03 2021



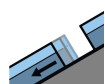
Gliding snow



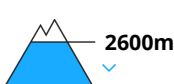
PM:



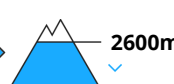
Tendency: Constant avalanche danger →
 on Thursday 04 03 2021



Gliding snow



Wet snow



Currently there are generally favourable conditions. Gliding snow requires caution.

A clear night will be followed by generally favourable conditions. Slight increase in avalanche danger as a consequence of warming during the day and solar radiation.

Gliding avalanches are possible in particular in the second half of the day in isolated cases. These can reach dangerously large size, especially on the Main Alpine Ridge and to the south. Caution is to be exercised in particular on steep grassy slopes, especially in sunny starting zones that have retained the snow thus far. Gliding avalanches can also be released in the morning on rare occasions. Areas with glide cracks are to be avoided.

Moist avalanches can in isolated cases be released. This applies in particular in case of a large load, especially in the afternoon. Caution is to be exercised in particular on steep sunny slopes below approximately 2600 m.

Dry avalanches can additionally in very isolated cases be released in deeper layers, in particular on extremely steep shady slopes above approximately 2300 m at transitions from a shallow to a deep snowpack.

Snowpack

Danger patterns

dp.2: gliding snow

dp.10: springtime scenario

Outgoing longwave radiation during the night will be good. The surface of the snowpack has frozen to form a strong crust and will hardly soften at all. In steep terrain there is a danger of falling on the hard snow surface.

The snowpack will be moist. This applies on steep sunny slopes below approximately 2600 m.

Isolated avalanche prone weak layers exist in the old snowpack, in particular on steep sunny slopes below approximately 2600 m, also on shady slopes above approximately 2300 m in areas where the snow cover is



rather shallow. At low and intermediate altitudes hardly any snow is lying, in particular in the north.

Tendency

A clear night will be followed by favourable conditions. Wet and gliding avalanches require caution.



Danger Level 1 - Low

AM:**Tendency: Constant avalanche danger** →
on Thursday 04 03 2021**PM:****Tendency: Constant avalanche danger** →
on Thursday 04 03 2021

Wet snow



Currently there are favourable avalanche conditions.

A clear night will be followed by generally favourable conditions. Slight increase in avalanche danger as a consequence of warming during the day and solar radiation.

Moist avalanches can in isolated cases be released in particular on extremely steep sunny slopes. This applies in particular in case of a large load, especially in the afternoon. Such avalanche prone locations are rare. Avalanches are rather small.

Snowpack

Danger patterns

dp.10: springtime scenario

Outgoing longwave radiation during the night will be good. The surface of the snowpack has frozen to form a strong crust and will hardly soften at all. In steep terrain there is a danger of falling on the hard snow surface.

The old snowpack will be moist. This applies on sunny slopes.

At low and intermediate altitudes hardly any snow is lying.

Tendency

Currently there are favourable avalanche conditions.