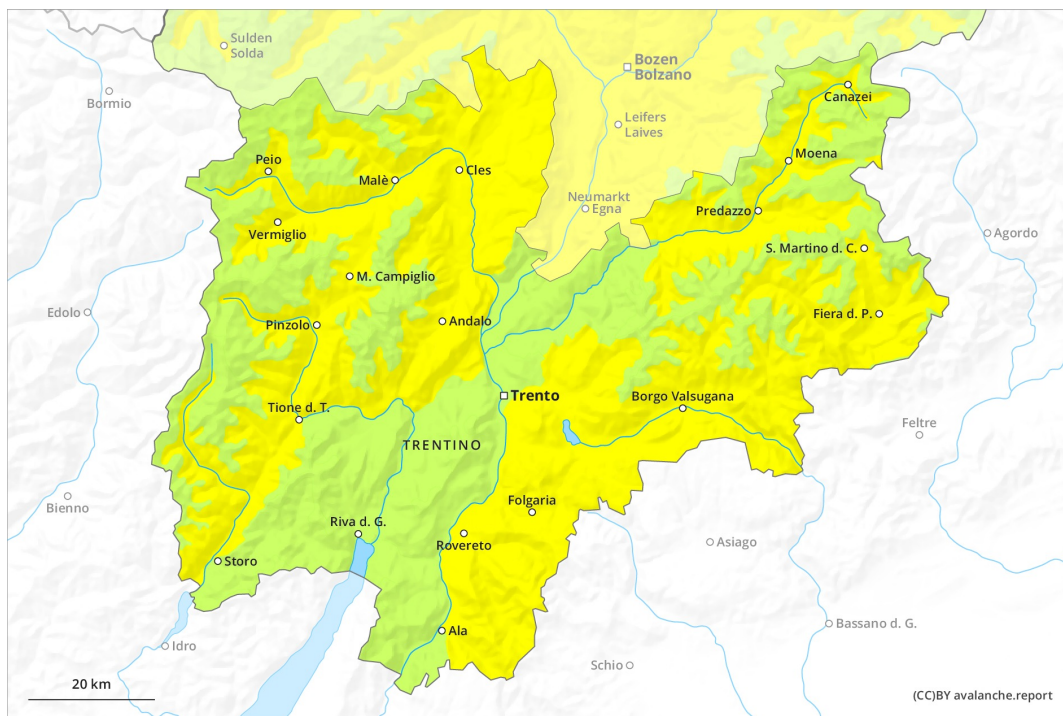
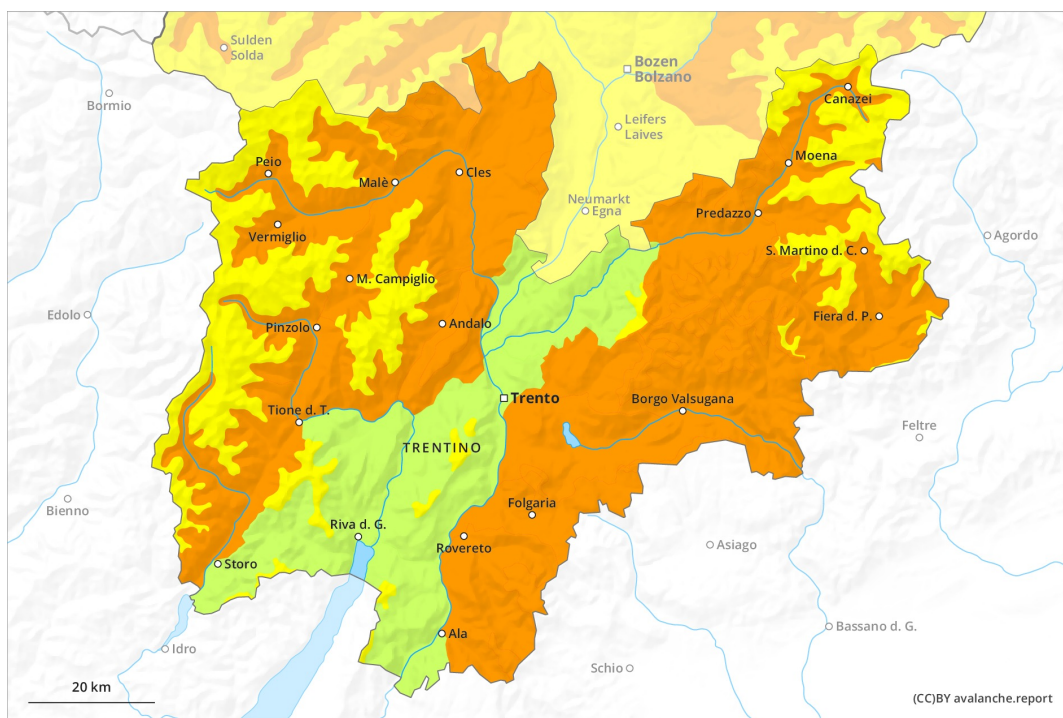




**AM**



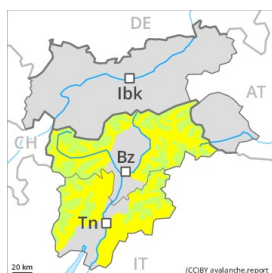
**PM**





## Danger Level 3 - Considerable

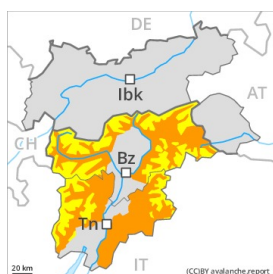
**AM:**



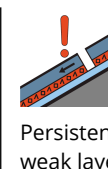
**Tendency: Constant avalanche danger** →  
 on Saturday 03 04 2021



**PM:**



**Tendency: Constant avalanche danger** →  
 on Saturday 03 04 2021



In the late morning a generally favourable avalanche situation will prevail. Gradual increase in avalanche danger as a consequence of warming during the day and solar radiation.

Late morning: Weakly bonded old snow represents the main danger. Individual avalanche prone locations for dry avalanches are to be found in particular on northwest, north and northeast facing slopes. Caution is to be exercised in particular in extremely steep terrain on little-used, rather lightly snow-covered slopes at high altitudes and in high Alpine regions. These avalanche prone locations are rather rare.

From the late morning as a consequence of warming during the day and solar radiation there will be a gradual increase in the danger of wet and gliding avalanches. On sunny slopes more frequent medium-sized and large natural wet avalanches are to be expected in all altitude zones. Moist and wet avalanches can additionally be released in near-surface layers by a single winter sport participant. Backcountry tours should be concluded timely.

### Snowpack

**Danger patterns**

dp.10: springtime scenario

dp.7: snow-poor zones in snow-rich surrounding

Outgoing longwave radiation during the night will be quite good. In steep terrain there is a danger of falling on the hard snow surface. This applies in particular at high altitudes and in high Alpine regions. On sunny slopes the snowpack will soften in the morning already.



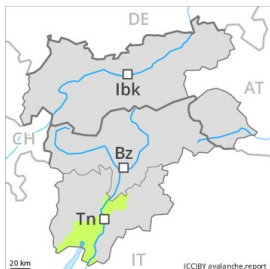
Older wind slabs are lying on soft layers, especially on little used slopes, as well as adjacent to ridgelines at high altitudes and in high Alpine regions.

## Tendency

Decrease in danger of wet avalanches as the temperature drops.

## Danger Level 2 - Moderate

**AM:**



**Tendency: Increasing avalanche danger**  
 on Saturday 03 04 2021

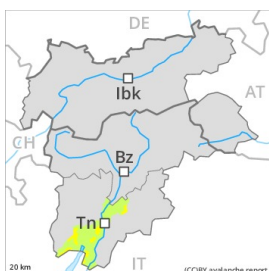


Persistent weak layer



Treeline

**PM:**



Treeline

**Tendency: Increasing avalanche danger**  
 on Saturday 03 04 2021



Persistent weak layer



Treeline

On shady slopes a favourable early-morning avalanche situation will persist in some regions. Further increase in danger of gliding avalanches and wet snow slides as a consequence of warming during the day and solar radiation.

In particular in gullies and bowls and behind abrupt changes in the terrain clearly visible wind slabs formed. The older wind slabs can be released easily. or in isolated cases naturally, in particular on steep shady slopes. Mostly avalanches are medium-sized. The avalanche prone locations are numerous but are clearly recognisable to the trained eye. The prevalence of such avalanche prone locations will increase with altitude.

As the day progresses as a consequence of warming during the day and solar radiation there will be a gradual increase in the danger of gliding avalanches and wet snow slides. This applies in particular on grassy slopes at intermediate altitudes on steep sunny slopes.

### Snowpack

**Danger patterns**

dp.10: springtime scenario

Outgoing longwave radiation during the night will be reduced over a wide area. In steep terrain there is a danger of falling on the hard snow surface. The old snowpack will be stable over a wide area. In southeast to south to south facing aspects no snow is lying.

### Tendency

A clear night will be followed in the early morning by generally favourable avalanche conditions for a short time, but the danger of wet and gliding avalanches will increase later.