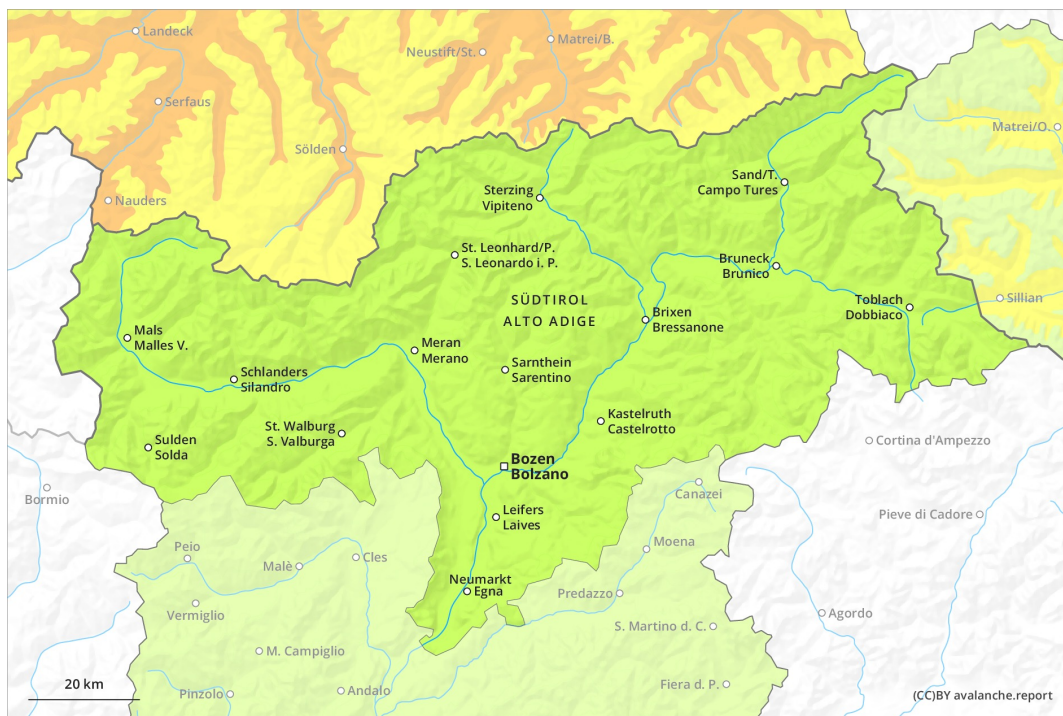
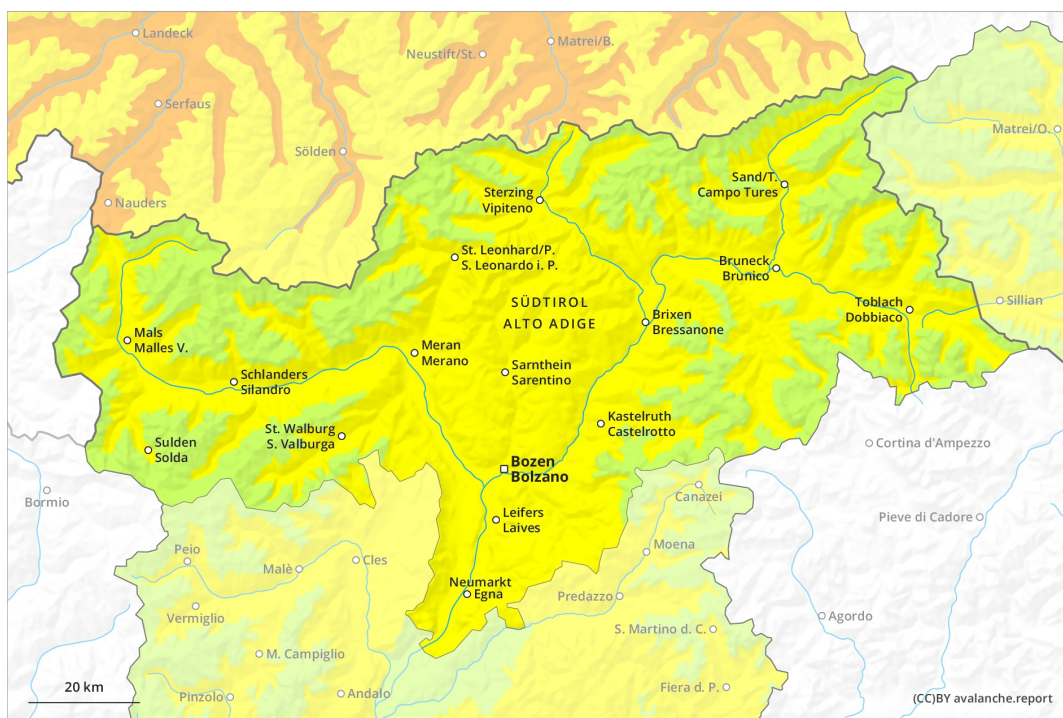




AM

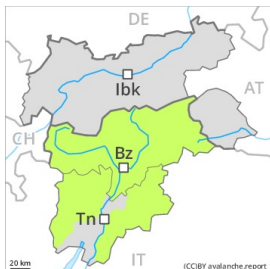


PM



Danger Level 2 - Moderate

AM:



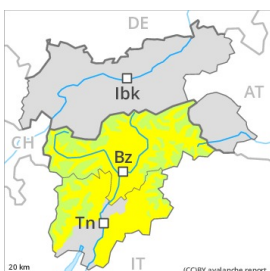
Tendency: Increasing avalanche danger
 on Sunday 04 04 2021



Persistent weak layer



PM:



Tendency: Increasing avalanche danger
 on Sunday 04 04 2021



Wet snow



Persistent weak layer



Increase in danger of wet avalanches in the course of the day.

The early morning will see favourable conditions over a wide area. Individual avalanche prone locations for dry avalanches are to be found on extremely steep shady slopes and at transitions from a shallow to a deep snowpack. In many places there is a danger of falling on the hard snow surface.

As the day progresses small and medium-sized wet avalanches are possible. Avalanche prone locations are to be found in particular on east, south and west facing slopes below approximately 2600 m and on north facing slopes below approximately 2200 m. Moist and wet avalanches can in isolated cases be released in near-surface layers by people. Individual gliding avalanches can also occur.

Backcountry tours should be concluded timely.

Snowpack

Danger patterns

dp.10: springtime scenario

Outgoing longwave radiation during the night will be quite good over a wide area. In the northeast a partly overcast night. Here in some localities up to 5 cm of snow will fall. Over a wide area strong foehn wind from the north.

As a consequence of falling temperatures the snowpack will consolidate. In all altitude zones the snowpack will soften later than the day before.

Isolated avalanche prone weak layers exist in the snowpack at high altitudes and in high Alpine regions, especially on near-ridge shady slopes, as well as at transitions from a shallow to a deep snowpack in high Alpine regions.

Tendency



Further decrease in danger of wet avalanches as the temperature drops.