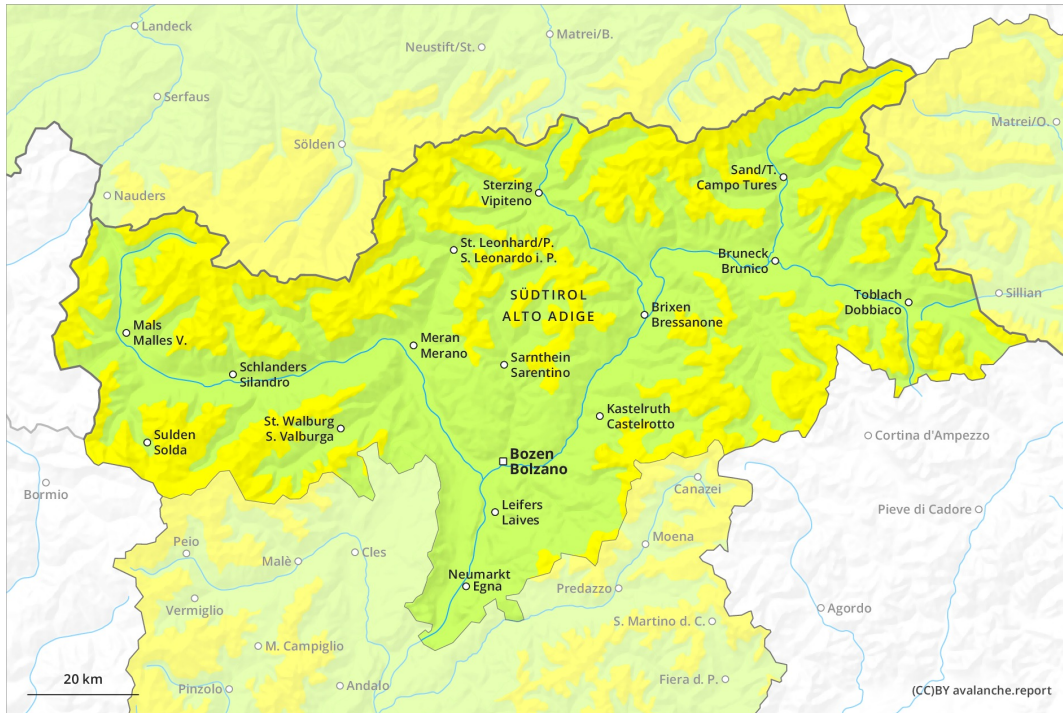
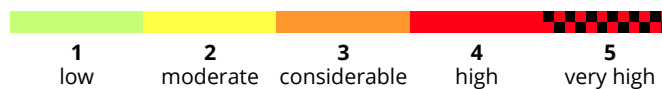
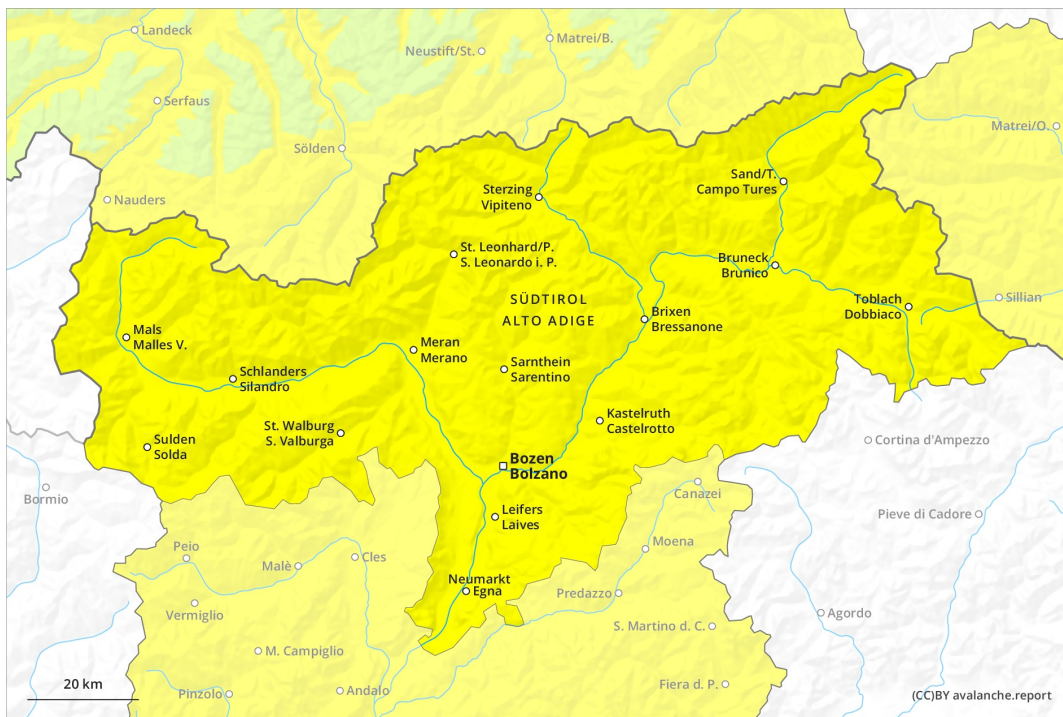




# AM

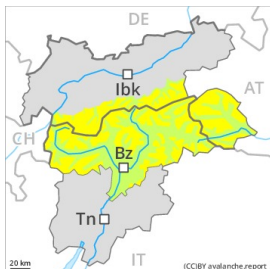


# PM



## Danger Level 2 - Moderate

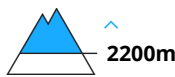
**AM:**



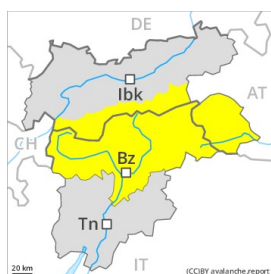
**Tendency: Constant avalanche danger** →  
 on Friday 23 04 2021



Persistent weak layer



**PM:**



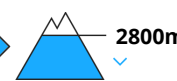
**Tendency: Constant avalanche danger** →  
 on Friday 23 04 2021



Persistent weak layer



Wet snow



Wet snow



Weakly bonded old snow especially on extreme shady slopes. Wet avalanches as the day progresses.

Avalanche prone weak layers exist in the top section of the snowpack, in particular on very steep shady slopes above approximately 2200 m. Avalanches can in very isolated cases be released by small loads and reach medium size.

The early morning will see quite favourable avalanche conditions generally, but the danger of wet avalanches will increase later. As a consequence of warming during the day and solar radiation wet avalanches are possible as the day progresses, in particular on rocky sunny slopes below approximately 2800 m.

### Snowpack

**Danger patterns**

dp.1: deep persistent weak layer

dp.10: springtime scenario

Towards its surface, the snowpack is unfavourably layered, especially on very steep shady slopes above approximately 2200 m.

Outgoing longwave radiation during the night will be reduced in some case. Sunshine and high temperatures will give rise from early morning to rapid moistening of the snowpack especially on steep sunny slopes below approximately 2800 m. At low altitude only a little snow is lying.



## Tendency

Slight increase in danger of moist and wet avalanches as a consequence of warming during the day and solar radiation, also in case of releases originating from shady starting zones.