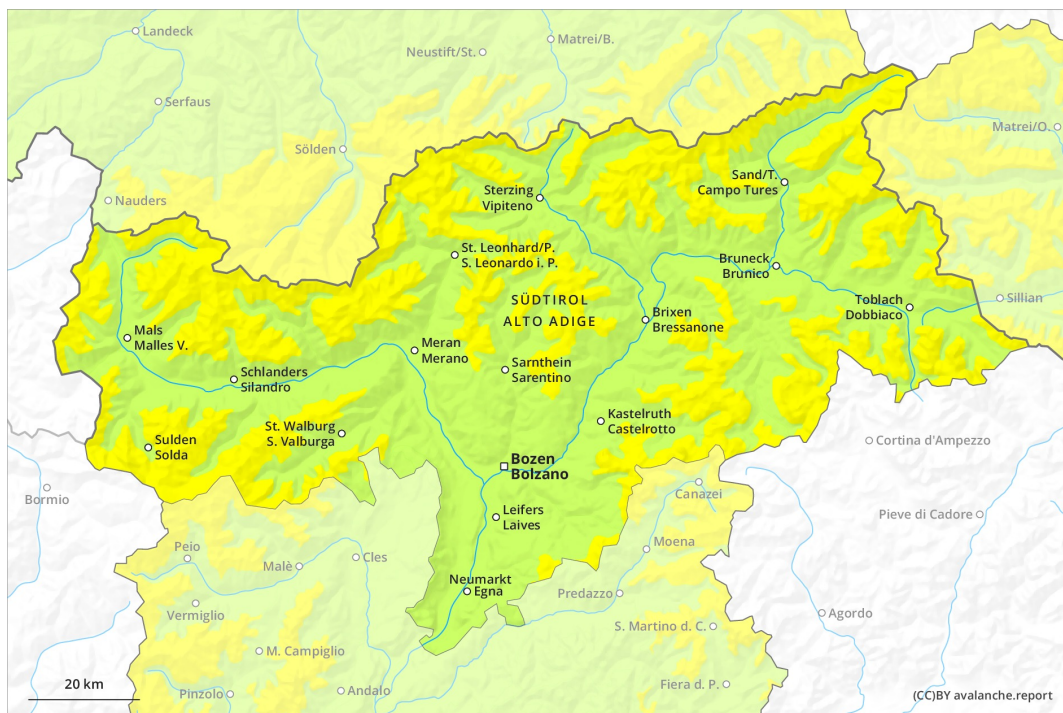
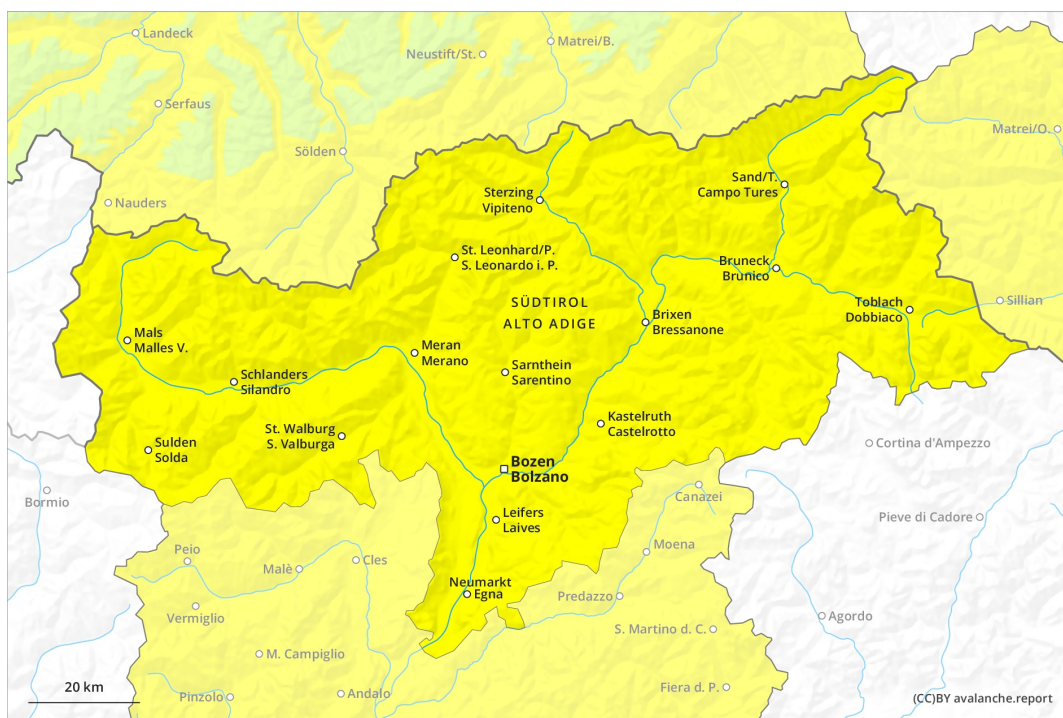




AM

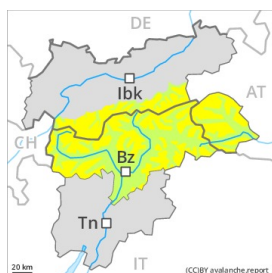


PM



Danger Level 2 - Moderate

AM:



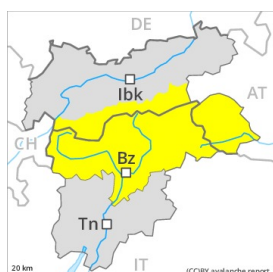
Tendency: Increasing avalanche danger
 on Saturday 24 04 2021



Persistent
weak layer



PM:



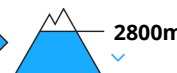
Tendency: Increasing avalanche danger
 on Saturday 24 04 2021



Persistent
weak layer



Wet snow



Wet snow



Wet avalanches as the day progresses. Weakly bonded old snow especially on extreme shady slopes.

The early morning will see quite favourable avalanche conditions generally, but the danger of wet avalanches will increase later. As a consequence of warming during the day and solar radiation wet avalanches are possible as the day progresses, in particular on rocky sunny slopes below approximately 2800 m, as well as on steep shady slopes below approximately 2400 m. Backcountry tours should be concluded timely.

Avalanche prone weak layers exist in the top section of the snowpack, in particular on extremely steep shady slopes above approximately 2400 m. Avalanches can in some places be released, mostly by large loads and reach medium size.

Snowpack

Danger patterns

dp.10: springtime scenario

Outgoing longwave radiation during the night will be quite good in some case. Sunshine and high temperatures will give rise from early morning to rapid moistening of the snowpack especially on steep sunny slopes below approximately 2800 m. This also applies on steep shady slopes below approximately 2400 m.



Towards its surface, the snowpack is unfavourably layered, especially on extremely steep shady slopes above approximately 2400 m.

At low altitude only a little snow is lying.

Tendency

Increase in danger of moist and wet avalanches as a consequence of warming during the day and solar radiation, also in case of releases originating from shady starting zones.