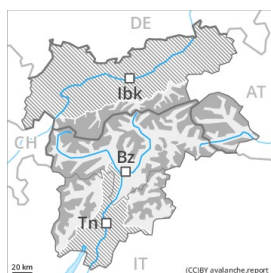




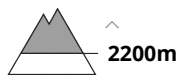
Danger Level 3 - Considerable



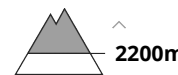
Tendency: Decreasing avalanche danger
 on Wednesday 05 05 2021



Wind-drifted
 snow



Wet snow



High altitudes and the high Alpine regions: Wind slabs require caution. Increase in avalanche danger as a consequence of warming during the day and solar radiation.

As a consequence of new snow and a sometimes strong wind from variable directions, sometimes easily released wind slabs formed in the last few days in gullies and bowls and behind abrupt changes in the terrain. Caution is to be exercised in particular on steep shady slopes at high altitudes and in high Alpine regions.

As a consequence of warming during the day and solar radiation there will be a gradual increase in the danger of moist and wet avalanches. In particular on steep shady slopes avalanches can release the saturated snowpack and reach large size in isolated cases. In some places avalanches can be released naturally. Exposed parts of transportation routes can be endangered occasionally.

Backcountry touring calls for meticulous route selection.

The Avalanche Warning Service currently has only a small amount of information that has been collected in the field, so that the avalanche danger should be investigated especially thoroughly in the relevant locality.

Snowpack

Danger patterns

dp.6: cold, loose snow and wind

dp.10: springtime scenario

The snowpack is moist and its surface has a melt-freeze crust that is barely capable of bearing a load, especially on steep sunny slopes at high altitudes and in high Alpine regions. The old snowpack is wet, in particular below approximately 2600 m.

At low and intermediate altitudes only a little snow is lying, especially on sunny slopes. At high altitudes and in high Alpine regions there is still a very large amount of snow.

Tendency

Fresh wind slabs are to be evaluated with care and prudence. Slight increase in avalanche danger as a consequence of warming during the day and solar radiation.



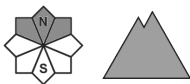
Danger Level 1 - Low



Tendency: Constant avalanche danger →
on Wednesday 05 05 2021



Wet snow



Wet snow requires caution.

Wet avalanches can in some places be released in near-surface layers by a single winter sport participant, especially on shady slopes. As the day progresses small and medium-sized wet avalanches are possible.

Snowpack

Danger patterns

dp.10: springtime scenario

The surface of the snowpack will already soften in the late morning. At low and intermediate altitudes a little snow is lying.

Tendency

The danger of wet avalanches will decrease gradually.