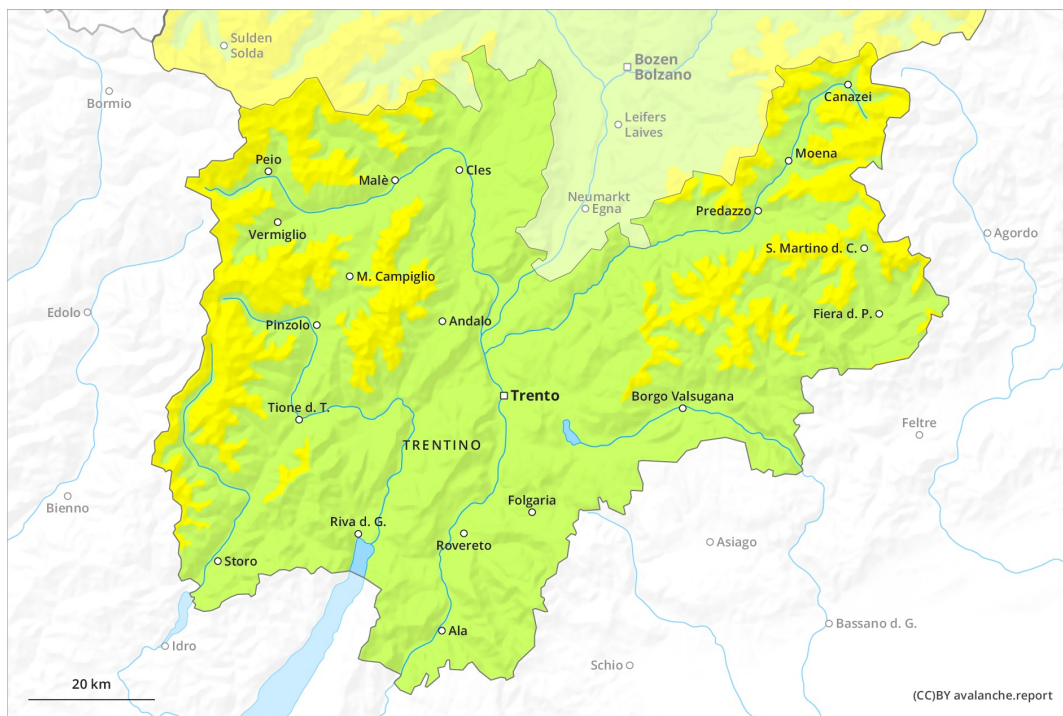
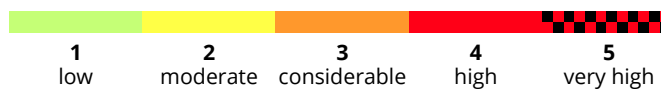
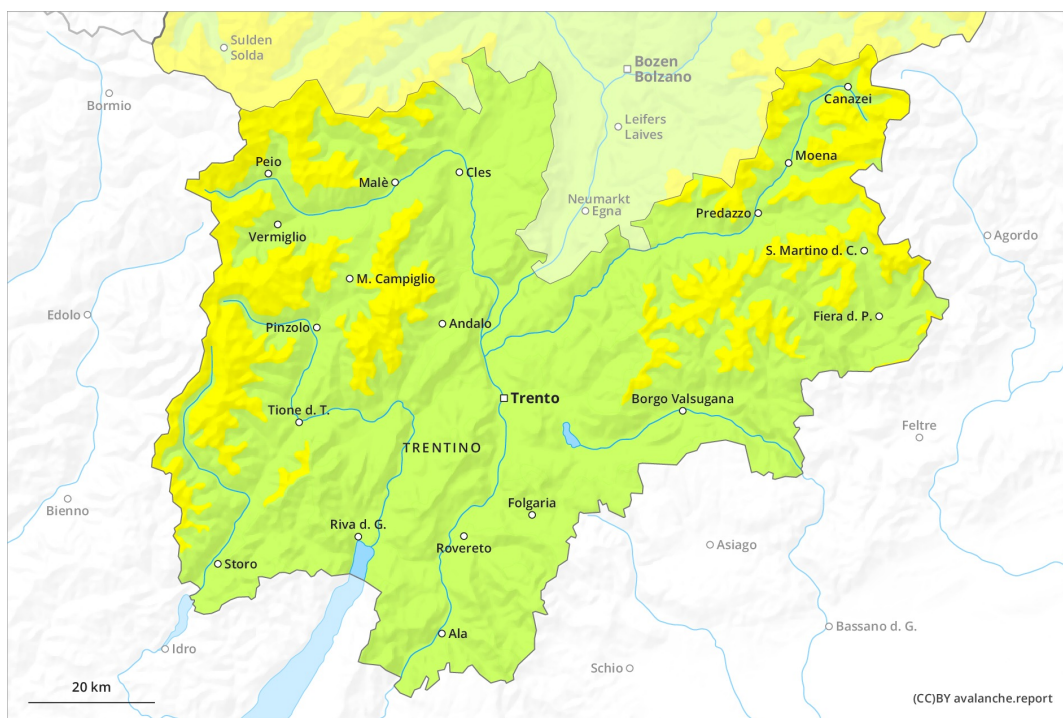




AM

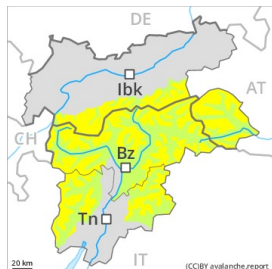


PM



Danger Level 2 - Moderate

AM:



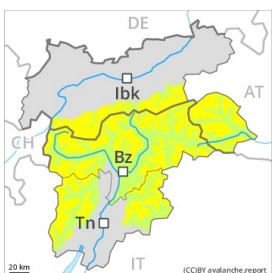
Tendency: Increasing avalanche danger
 on Sunday 09 05 2021



Wind-drifted
 snow



PM:



Tendency: Increasing avalanche danger
 on Sunday 09 05 2021



Wet snow



Wind-drifted
 snow



Fresh wind slabs require caution. Wet avalanches as the day progresses.

The fresh and older wind slabs are to be evaluated with care and prudence in steep terrain. They are easy for the trained eye to recognise but in some cases prone to triggering. Caution is to be exercised on near-ridge shady slopes at high altitudes and in high Alpine regions.

During the day: As a consequence of warming during the day and solar radiation wet snow slides and avalanches are to be expected. These can release the saturated snowpack and reach quite a large size in particular on steep shady slopes. Exposed parts of transportation routes can be endangered occasionally. Wet avalanches can additionally in some places be released by people. Backcountry tours should be concluded timely.

The Avalanche Warning Service currently has only a small amount of information that has been collected in the field, so that the avalanche danger should be investigated especially thoroughly in the relevant locality.

Snowpack

Danger patterns

dp.10: springtime scenario

dp.6: cold, loose snow and wind

Outgoing longwave radiation during the night will be reduced in some case. The covering of new snow is moist and its surface has a melt-freeze crust that is barely capable of bearing a load. Wind slabs are lying on a moist old snowpack. This applies on sunny slopes below approximately 3000 m, as well as on shady slopes below approximately 2500 m. Sunshine and high temperatures will give rise as the day progresses to increasing and thorough wetting of the snowpack.

At low and intermediate altitudes only a little snow is lying, especially on sunny slopes. At high altitudes and in high Alpine regions a lot of snow is lying for the time of year.

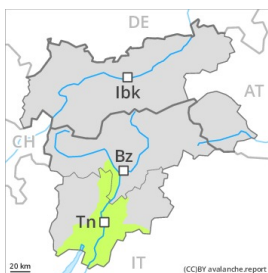


Tendency

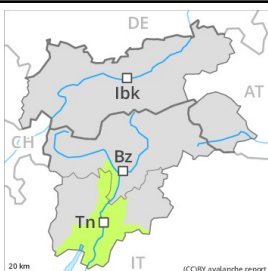
Significant warming to the high Alpine regions. Wet avalanches as the day progresses, in particular on shady slopes. Wind slabs require caution.

Danger Level 1 - Low

AM:



PM:



Wet snow



2200m

Wet snow requires caution.

As the day progresses only isolated small wet avalanches are possible. Wet avalanches can in some places be released, especially on shady slopes.

Snowpack

Danger patterns

dp.10: springtime scenario

Outgoing longwave radiation during the night will be quite good over a wide area. The surface of the snowpack will already be soft in the early morning. Sunshine and high temperatures will give rise as the day progresses to increasing and thorough wetting of the snowpack.

At low and intermediate altitudes only a little snow is lying. In addition, from a snow sport perspective, in most cases insufficient snow is lying.

Tendency

Wet snow requires caution.