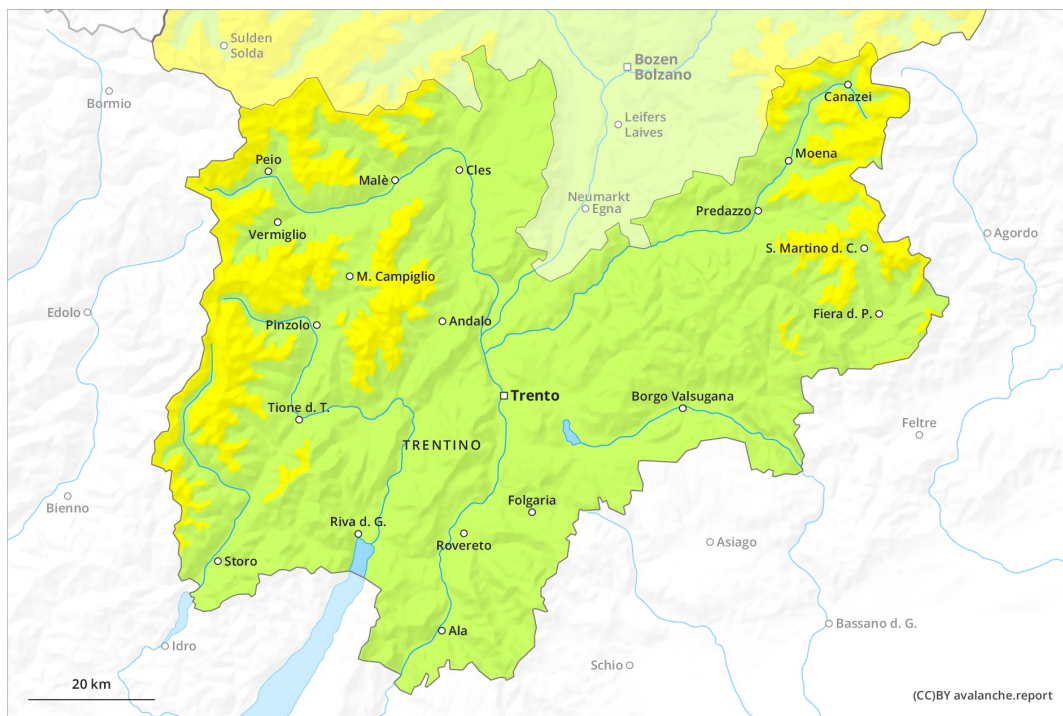
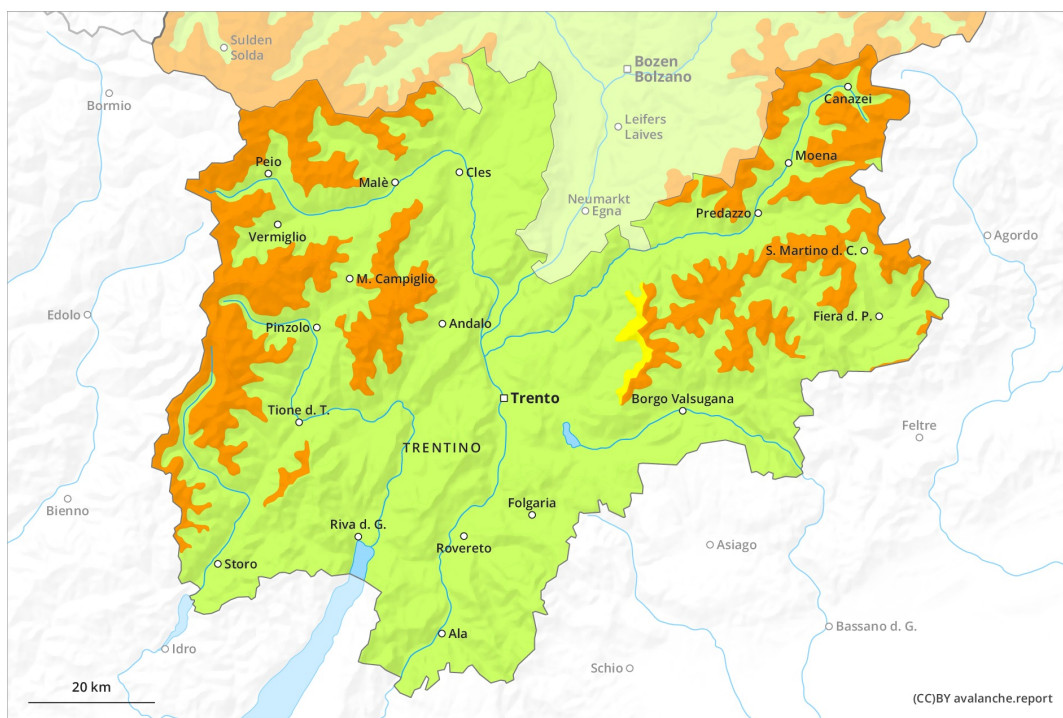




AM

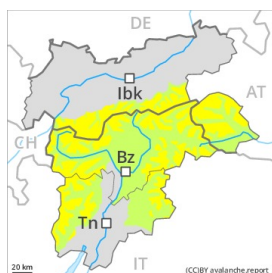


PM



Danger Level 3 - Considerable

AM:



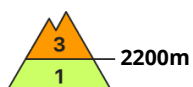
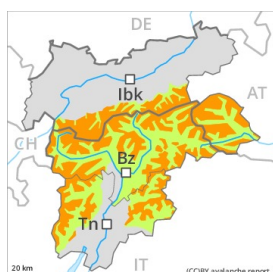
Tendency: Increasing avalanche danger
 on Monday 10 05 2021



Wind-drifted
 snow



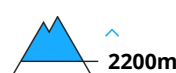
PM:



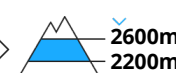
Tendency: Increasing avalanche danger
 on Monday 10 05 2021



Wet snow



Wet snow



Wind-drifted
 snow



This is the final hazard map for the winter 2020/21.

Significant warming to the high Alpine regions. Wet avalanches as the day progresses.

The early morning will see quite favourable conditions mostly. Avalanche prone locations for dry avalanches are to be found adjacent to ridgelines and on steep shady slopes above approximately 2600 m. In high Alpine regions the avalanche prone locations are prevalent and the danger is greater.

As a consequence of warming during the day and solar radiation a large number of wet avalanches are to be expected as the day progresses. This applies in particular on steep sunny slopes at high altitudes and in high Alpine regions, as well as on steep shady slopes below approximately 2600 m. Wet avalanches can release the saturated snowpack and reach large size. Exposed parts of transportation routes can be endangered. Wet avalanches can additionally be released in near-surface layers by people. Backcountry tours should be started early and concluded timely.

The Avalanche Warning Service currently has only a small amount of information that has been collected in the field, so that the avalanche danger should be investigated especially thoroughly in the relevant locality.

Snowpack

Danger patterns

dp.10: springtime scenario



Outgoing longwave radiation during the night will be good over a wide area. Significant warming to the high Alpine regions. From midday the wind will be strong to storm force.

In some cases the wind slabs have bonded still only poorly with each other and the old snowpack, in particular in high Alpine regions, as well as on steep shady slopes.

Towards its base, the snowpack is moist and its surface has a strong melt-freeze crust. Sunshine and high temperatures will give rise as the day progresses to a loss of strength within the snowpack.

At low and intermediate altitudes only a little snow is lying, especially on sunny slopes. At high altitudes and in high Alpine regions a lot of snow is lying for the time of year.

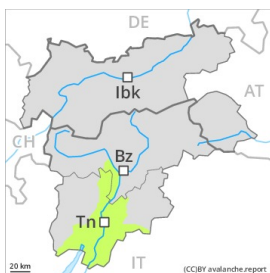
Tendency

Monday: Wind slabs in the high Alpine regions. Wet avalanches at intermediate and high altitudes.

Tuesday: Significant increase in danger of dry avalanches as a consequence of new snow and stormy weather.

Danger Level 2 - Moderate

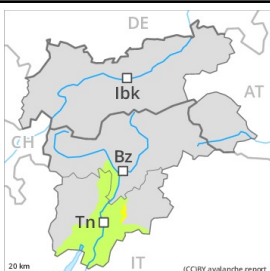
AM:



Tendency: Increasing avalanche danger
on Monday 10 05 2021



PM:



Tendency: Increasing avalanche danger
on Monday 10 05 2021



Wet snow



2200m

Wet snow requires caution.

As the day progresses only isolated small wet avalanches are possible. Wet avalanches can in some places be released, especially on shady slopes.

Snowpack

Danger patterns

dp.10: springtime scenario

Outgoing longwave radiation during the night will be good over a wide area. The surface of the snowpack will already be soft in the early morning. Sunshine and high temperatures will give rise as the day progresses to increasing and thorough wetting of the snowpack.

At low and intermediate altitudes only a little snow is lying. In addition, from a snow sport perspective, in most cases insufficient snow is lying.

Tendency

Tuesday: Significant increase in danger of dry avalanches as a consequence of new snow and strong wind.