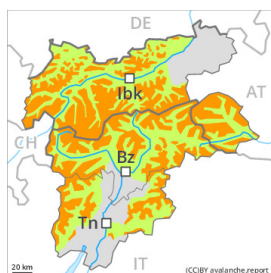


Danger Level 3 - Considerable



Tendency: Constant avalanche danger →
on Saturday 04 12 2021



Persistent
weak layer



Treeline



Wind-drifted
snow



Treeline

Weakly bonded old snow represents the main danger. Wind slabs are to be evaluated with care and prudence.

Weak layers in the old snowpack can be released over a wide area even by individual winter sport participants, in particular on steep shady slopes above the tree line, as well as in all aspects at elevated altitudes. Whumpfung sounds and the formation of shooting cracks when stepping on the snowpack serve as an alarm indicating the danger. Remotely triggered avalanches are possible.

The extensive wind slabs can be released by a single winter sport participant in all aspects above the tree line. The somewhat older wind slabs are covered with new snow in some cases and therefore difficult to recognise.

Mostly the avalanches are medium-sized. The number and size of avalanche prone locations will increase with altitude. Experience in the assessment of avalanche danger is required.

Snowpack

Danger patterns

dp.5: snowfall after a long period of cold

dp.6: cold, loose snow and wind

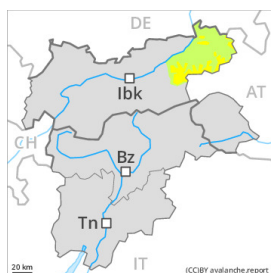
Since Tuesday the wind has been storm force in some cases. The wind has transported the fresh and old snow significantly. In some cases the various wind slabs have bonded poorly with each other and the old snowpack.

Faceted weak layers exist in the centre of the snowpack, in particular on shady slopes above the tree line, as well as on steep sunny slopes at elevated altitudes. Whumpfung sounds and the formation of shooting cracks when stepping on the snowpack confirm the existence of a weak snowpack.

Tendency

In the north and in the northwest new snow. Significant warming to the high Alpine regions. The avalanche danger will persist.

Danger Level 2 - Moderate



Tendency: Constant avalanche danger →
on Saturday 04 12 2021



Wind-drifted
snow



Treeline

Wind slabs require caution.

A lot of snow fell in the last few days in some regions. Since Tuesday the wind has been storm force over a wide area. The wind has transported the fresh and old snow significantly. The wind slabs can be released by a single winter sport participant in all aspects above the tree line. Avalanches can reach medium size. The somewhat older wind slabs are covered with new snow in some cases and therefore difficult to recognise.

Gliding avalanches and snow slides are possible in isolated cases as before. This applies in particular on steep grassy slopes below approximately 2400 m.

Snowpack

Danger patterns

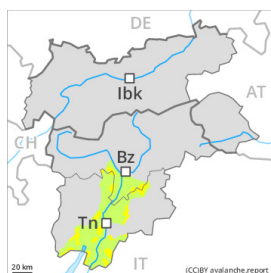
dp.6: cold, loose snow and wind

A lot of snow fell in the last few days in some regions. Since Tuesday the wind has been storm force over a wide area. The wind has transported the new snow significantly. In some cases the various wind slabs have bonded poorly together.

Tendency

The avalanche danger will persist.

Danger Level 2 - Moderate



Tendency: Constant avalanche danger →
 on Saturday 04 12 2021



Persistent weak layer



Treeline



Wind-drifted snow



Treeline

Weak layers in the old snowpack necessitate caution. Wind slabs are to be evaluated with care and prudence.

Weak layers in the old snowpack can be released by individual winter sport participants. Such avalanche prone locations are to be found in particular on shady slopes above the tree line. At elevated altitudes the avalanche prone locations are to be found in all aspects. Whumpfing sounds and the formation of shooting cracks when stepping on the snowpack serve as an alarm indicating the danger.

The fresh and older wind slabs are in some cases prone to triggering in all aspects above the tree line. The number and size of avalanche prone locations will increase with altitude. Mostly avalanches are medium-sized.

Experience in the assessment of avalanche danger is required.

Snowpack

Danger patterns

dp.5: snowfall after a long period of cold

dp.6: cold, loose snow and wind

Since Tuesday the wind has been storm force in some cases. The wind has transported the fresh and old snow significantly. In some cases the various wind slabs have bonded poorly with each other and the old snowpack.

Faceted weak layers exist in the centre of the snowpack, in particular on shady slopes above the tree line, as well as on steep sunny slopes at elevated altitudes. Whumpfing sounds and the formation of shooting cracks when stepping on the snowpack confirm the existence of a weak snowpack.

Tendency

In the north and in the northwest new snow. Significant warming to the high Alpine regions. The avalanche danger will persist.