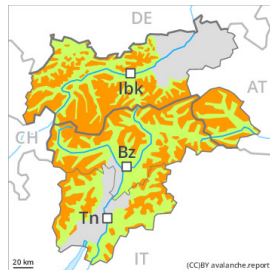




Danger Level 3 - Considerable



Tendency: Constant avalanche danger →
on Thursday 16 12 2021



Persistent weak layer



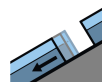
Treeline



Wind-drifted snow



Treeline



Gliding snow



2400m

Weakly bonded old snow requires caution. Wind slabs are to be evaluated with care and prudence.

Weak layers in the old snowpack can still be released by individual winter sport participants. Caution is to be exercised in areas where the snow cover is rather shallow. Remotely triggered avalanches are possible in isolated cases. Mostly avalanches are medium-sized. Whumpfung sounds and the formation of shooting cracks when stepping on the snowpack indicate poor snowpack stability.

The somewhat older wind slabs are in some cases still prone to triggering, in particular on steep shady slopes above the tree line, as well as in all aspects at elevated altitudes.

On very steep sunny slopes wet and gliding avalanches are possible as the day progresses, this also applies on steep shady slopes at intermediate altitudes.

Extensive experience in the assessment of avalanche danger is required.

Snowpack

Danger patterns

dp.6: cold, loose snow and wind

Faceted weak layers exist in the centre of the snowpack, in particular on shady slopes above the tree line, as well as on sunny slopes at elevated altitudes. The old snowpack will be prone to triggering in high Alpine regions. Field observations and snow profiles confirm this situation.

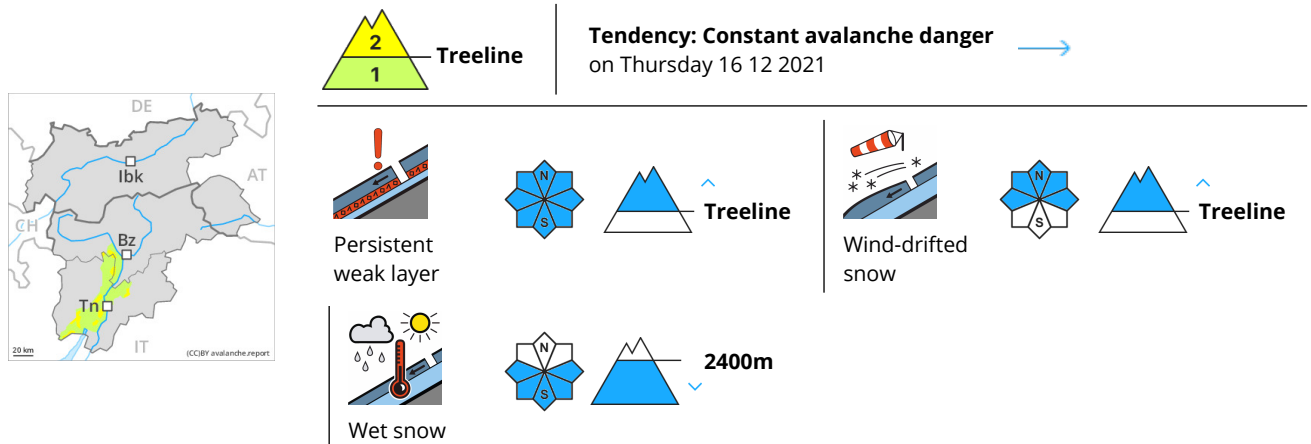
The wind slabs of the weekend are in some cases still prone to triggering. They are poorly bonded with the old snowpack in particular on shady slopes. As a consequence of mild temperatures and solar radiation the snowpack will consolidate during the next few days.

Sunshine and high temperatures will give rise as the day progresses to slight moistening of the snowpack.

Tendency

The weather conditions will foster a gradual strengthening of the near-surface layers. The danger of dry avalanches will decrease gradually. On shady slopes the situation is more dangerous. The danger of wet and gliding avalanches will increase a little during the day.

Danger Level 2 - Moderate



Weakly bonded old snow is to be evaluated with care and prudence. Wind slabs are to be avoided.

Avalanches can in some places be released in the weakly bonded old snow, in particular in areas where the snow cover is rather shallow. Mostly avalanches are medium-sized. Whumpung sounds and the formation of shooting cracks when stepping on the snowpack indicate this situation.

The wind slabs of the last few days are in some cases still prone to triggering. They are mostly rather small but can be released easily. Caution is to be exercised on steep shady slopes above the tree line, as well as in all aspects at elevated altitudes.

On very steep sunny slopes moist snow slides and avalanches are possible as the day progresses.

Careful route selection is recommended. Steep slopes are to be traversed by snow sport participants one at a time.

Snowpack

Danger patterns

dp.6: cold, loose snow and wind

Faceted weak layers exist in the centre of the snowpack, in particular on shady slopes above the tree line, as well as on sunny slopes at elevated altitudes. Field observations and snow profiles confirm this situation. The wind slabs of the weekend are in some cases still prone to triggering. They are poorly bonded with the old snowpack in particular on shady slopes. As a consequence of mild temperatures and solar radiation the snowpack will consolidate during the next few days.

Sunshine and high temperatures will give rise as the day progresses to slight moistening of the snowpack.

Tendency

The weather conditions will foster a slow strengthening of the near-surface layers. The danger of dry avalanches will decrease gradually. On shady slopes the situation is less favourable. The danger of wet and gliding avalanches will increase a little during the day.