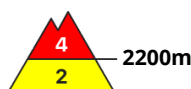
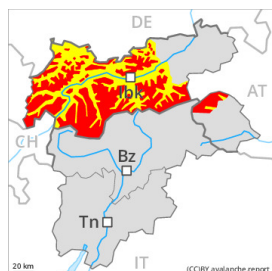


Danger Level 4 - High



Tendency: Constant avalanche danger →

on Friday 31 12 2021



New snow



2200m



Wet snow



2200m

The new snow and wind slabs of the last two days represent the main danger. The danger of slab avalanches will persist. Decrease in danger of wet avalanches as the precipitation eases.

As a consequence of new snow and stormy weather a precarious avalanche situation will be encountered over a wide area. This applies in particular above approximately 2200 m. The avalanche prone locations are to be found in all aspects. They are sometimes covered with new snow and are therefore difficult to recognise. Single winter sport participants can release avalanches easily, including large ones. At elevated altitudes these avalanche prone locations are more prevalent and larger. Medium-sized and, in isolated cases, large natural avalanches are possible as a consequence of the strong northwesterly wind.

As a consequence of the ceasing of precipitation there will be a gradual decrease in the danger of wet and gliding avalanches.

Snowpack

Danger patterns

dp.6: cold, loose snow and wind

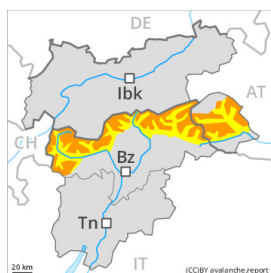
dp.3: rain

Some rain will fall on Thursday. Below approximately 2200 m the snowpack is wet all the way through. As a consequence of the storm force northwesterly wind, the snow drift accumulations will increase in size on Thursday, especially at elevated altitudes. The warm fresh snow as well as the widespread wind slabs are prone to triggering. The wind slabs have bonded poorly with each other and the old snowpack, in particular on steep shady slopes and at high altitudes and in high Alpine regions.

Tendency

Further warming to the high Alpine regions. On Friday it will be exceptionally warm. The wind will be moderate to strong over a wide area. The danger of dry avalanches will decrease gradually.

Danger Level 3 - Considerable



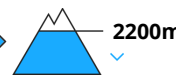
Tendency: Constant avalanche danger
on Friday 31 12 2021 →



Wind-drifted
snow



Wet snow



Fresh wind slabs represent the main danger. Wet and gliding snow require caution.

As a consequence of the stormy weather the wind slabs will increase in size once again on Thursday. The avalanche-prone wind slabs are to be avoided in all aspects. Single winter sport participants can release avalanches easily. Mostly avalanches are medium-sized. The number and size of avalanche prone locations will increase with altitude. Caution is to be exercised on steep shady slopes, as well as in the vicinity of peaks. In the regions neighbouring those that are subject to danger level 4 (high) the avalanche danger is higher.

As a consequence of the ceasing of precipitation there will be only a slight decrease in the danger of wet and gliding avalanches. As a consequence of warming during the day and solar radiation loose snow avalanches are to be expected, especially on steep sunny slopes, as well as in steep rocky terrain. Restraint is advisable on this first sunny day. Defensive route selection is recommended.

Snowpack

Danger patterns

dp.6: cold, loose snow and wind

Some rain will fall on Thursday in the north and in the northeast, this applies in particular until the early morning. On sunny slopes and at intermediate altitudes the snowpack will soften quickly.

The sometimes storm force wind will transport the fresh and old snow significantly, especially at elevated altitudes. In all aspects the wind slabs will increase in size once again. The warm fresh snow as well as the widespread wind slabs are in some cases still prone to triggering. In some cases the wind slabs have bonded still only poorly with each other and the old snowpack, in particular on steep shady slopes and at high altitudes and in high Alpine regions.

The snowpack will be generally subject to considerable local variations. Above the tree line snow depths vary greatly, depending on the influence of the wind. On sunny slopes below approximately 2200 m only a little snow is now lying.

Tendency

Further warming to the high Alpine regions. On Friday it will be exceptionally warm. The wind will be moderate over a wide area. Wet and gliding avalanches are still likely to occur. The danger of dry avalanches will decrease gradually.

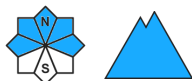
Danger Level 2 - Moderate



Tendency: Decreasing avalanche danger
on Friday 31 12 2021



Wet snow



Decrease in danger of wet avalanches as the precipitation eases.

As a consequence of the ceasing of precipitation there will be a gradual decrease in the danger of wet and gliding avalanches. Wet and gliding avalanches are possible however even now.

The fresh wind slabs are to be avoided. Individual avalanche prone locations are to be found at elevated altitudes.

Snowpack

Danger patterns

dp.3: rain

dp.2: gliding snow

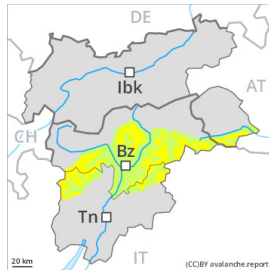
Some rain will fall on Thursday. Below approximately 2200 m the snowpack is wet all the way through. The sometimes storm force wind will transport only a little snow. Wind slabs will form in particular at elevated altitudes.

Tendency

Further warming to the high Alpine regions. On Friday it will be exceptionally warm. The wind will be moderate to strong over a wide area.



Danger Level 2 - Moderate

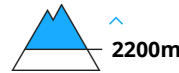


Tendency: Constant avalanche danger →

on Friday 31 12 2021



Wind-drifted
snow



Fresh wind slabs require caution.

As a consequence of the stormy weather the wind slabs will increase in size once again on Thursday. The avalanche-prone wind slabs are to be avoided in particular in steep terrain. Avalanches can be released, even by a single winter sport participant and reach medium size. The number and size of avalanche prone locations will increase with altitude. Caution is to be exercised in the vicinity of peaks, as well as on steep shady slopes.

As a consequence of warming there will be only a slight increase in the danger of wet and gliding avalanches.

Meticulous route selection is recommended.

Snowpack

Danger patterns

dp.6: cold, loose snow and wind

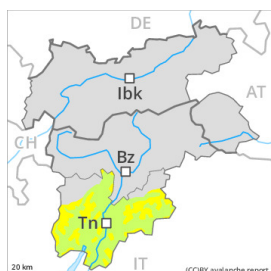
The sometimes storm force wind will transport the new snow and, in some cases, old snow as well, especially at elevated altitudes. The fresh wind slabs are in some cases prone to triggering. In some cases the wind slabs have bonded still only poorly with each other and the old snowpack, in particular on steep shady slopes and at high altitudes and in high Alpine regions.

On sunny slopes and at intermediate altitudes the snowpack will soften slowly. The snowpack will be generally subject to considerable local variations. Above the tree line snow depths vary greatly, depending on the influence of the wind. On sunny slopes below approximately 2200 m only a little snow is now lying.

Tendency

Further warming to the high Alpine regions. On Friday it will be exceptionally warm. The wind will be moderate over a wide area. The danger of dry avalanches will persist.

Danger Level 2 - Moderate



Tendency: Constant avalanche danger →
 on Friday 31 12 2021



Wet snow



Treeline



Persistent weak layer



2200m

A mostly favourable avalanche situation will prevail. Wet and gliding avalanches as the day progresses.

Avalanches can in very isolated cases be released in the weakly bonded old snow, mostly by large additional loads, especially on very steep shady slopes above approximately 2200 m, as well as in gullies and bowls at elevated altitudes. In particular transitions from a shallow to a deep snowpack are unfavourable.

As a consequence of warming there will be a gradual increase in the danger of wet and gliding avalanches, in particular on west, north and east facing slopes. Wet avalanches can in isolated cases be released in near-ground layers.

Backcountry touring calls for meticulous route selection.

Snowpack

Faceted weak layers exist in the centre of the snowpack, in particular on shady slopes above approximately 2200 m.

The snowpack will be generally subject to considerable local variations. Above the tree line snow depths vary greatly, depending on the influence of the wind. The old snowpack consists of faceted crystals; its surface is loosely bonded and consists of surface hoar and faceted crystals. This applies in particular on shady slopes above the tree line. As a consequence of highly fluctuating temperatures a crust formed on the surface. From early morning the weather will be very warm. These weather conditions will bring about a weakening of the snowpack as the day progresses in all aspects. At intermediate altitudes the snowpack will soften in the morning already.

On sunny slopes below approximately 2200 m only a little snow is now lying.

Tendency

Further warming to the high Alpine regions. On Friday it will be exceptionally warm. The wind will be moderate over a wide area. As a consequence of warming during the day and solar radiation wet and gliding avalanches are possible, but they will be mostly small.