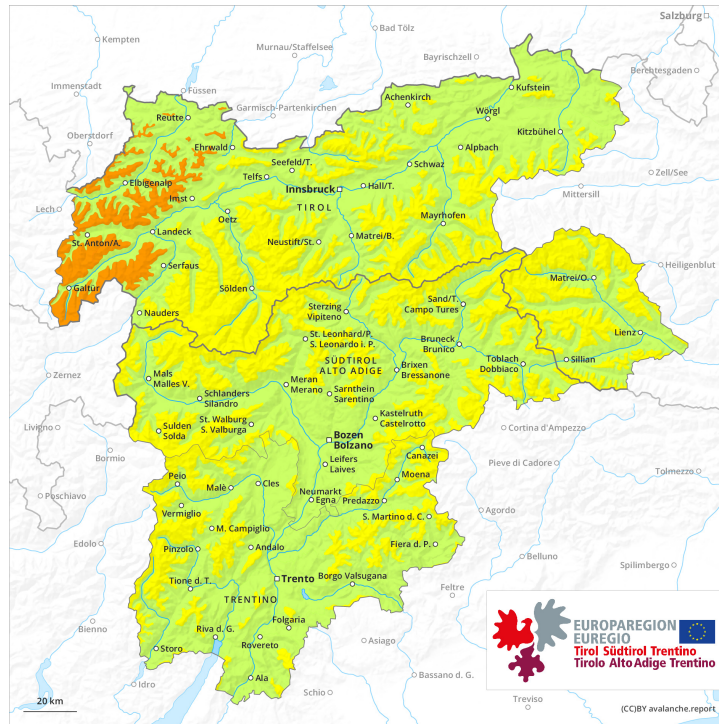
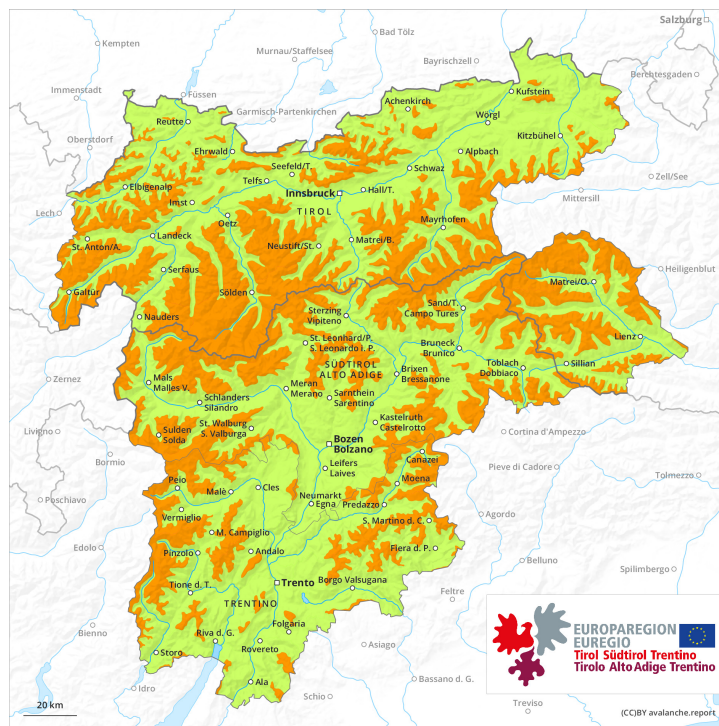




AM

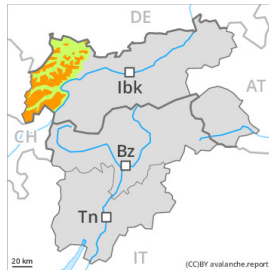


PM





Danger Level 3 - Considerable



Tendency: Constant avalanche danger →
on Thursday 06 01 2022



Wind-drifted
snow



Treeline

As a consequence of new snow and wind a considerable avalanche danger will prevail. This applies above the tree line.

New snow and wind slabs represent the main danger. As a consequence of new snow and a sometimes strong wind from variable directions, sometimes avalanche prone wind slabs will form in particular above the tree line. Avalanche prone locations for dry avalanches are to be found adjacent to ridgelines in all aspects and in gullies and bowls, and behind abrupt changes in the terrain. Avalanches can be released, even by a single winter sport participant and reach medium size. The number and size of avalanche prone locations will increase with altitude.

Dry avalanches can additionally in very isolated cases be released in deep layers by large loads. This applies in particular on extremely steep shady slopes above approximately 2400 m in areas where the snow cover is rather shallow.

Snowpack

Danger patterns

dp.6: cold, loose snow and wind

Over a wide area 20 to 30 cm of snow will fall on Wednesday. The wind will be strong. In some cases the various wind slabs have bonded poorly together.

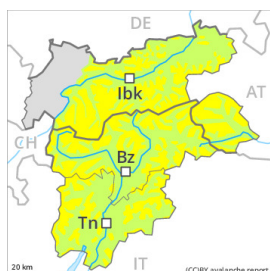
The old snowpack will be subject to considerable local variations. In very isolated cases weak layers exist in the centre of the old snowpack in particular on shady slopes. This applies in particular above approximately 2400 m.

Tendency

The avalanche danger will persist. Fresh wind slabs require caution.

Danger Level 3 - Considerable

AM:



Tendency: Constant avalanche danger →
 on Thursday 06 01 2022

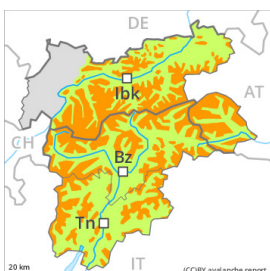


Wind-drifted snow



Treeline

PM:



Tendency: Constant avalanche danger →
 on Thursday 06 01 2022



Wind-drifted snow



Treeline

As the day progresses as a consequence of new snow and strong wind there will be an increase in the avalanche danger to level 3 (considerable).

New snow and wind slabs represent the main danger. As a consequence of new snow and a sometimes strong wind from variable directions, sometimes avalanche prone wind slabs will form in particular above the tree line. Avalanche prone locations for dry avalanches are to be found adjacent to ridgelines in all aspects and in gullies and bowls, and behind abrupt changes in the terrain. Avalanches can be released, even by a single winter sport participant and reach medium size. The number and size of avalanche prone locations will increase with altitude.

Dry avalanches can additionally in very isolated cases be released in deep layers by large loads. This applies in particular on extremely steep shady slopes above approximately 2400 m in areas where the snow cover is rather shallow.

Snowpack

Danger patterns

dp.6: cold, loose snow and wind

Over a wide area 15 to 30 cm of snow, and even more in some localities, will fall on Wednesday. The wind will be strong. In some cases the various wind slabs have bonded poorly together.

The old snowpack will be subject to considerable local variations. In very isolated cases weak layers exist in the centre of the old snowpack in particular on shady slopes. This applies in particular above approximately 2400 m.

Tendency

The avalanche danger will persist. Fresh wind slabs require caution.