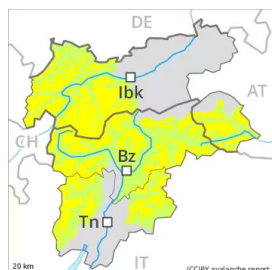


Danger Level 2 - Moderate



Tendency: Decreasing avalanche danger
on Wednesday 26 01 2022



Wind slabs require caution.

The fresh and older wind slabs can be released by a single winter sport participant in some cases. The avalanche prone locations are to be found in particular on west, north and east facing slopes above approximately 2400 m and in gullies and bowls, and behind abrupt changes in the terrain. In high Alpine regions these avalanche prone locations are to be found in all aspects. Fresh wind slabs are to be avoided especially in steep terrain.

Mostly small loose snow avalanches are possible especially on very steep shady slopes, this applies even in case of a single winter sport participant.

In steep terrain there is a danger of falling on the hard snow surface.

Snowpack

Danger patterns

dp.6: cold, loose snow and wind

On Tuesday the wind will be moderate to strong in some cases. The wind will transport the snow. The fresh and older wind slabs are lying on soft layers in particular on shady slopes above the tree line, in particular in places that are protected from the wind. The old snowpack will be subject to considerable local variations.

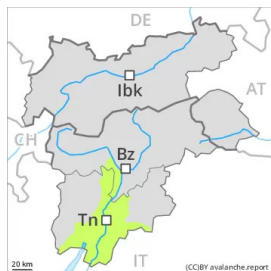
Towards its surface, the snowpack consists of faceted crystals, in particular on shady slopes.

Only a small amount of snow is lying for the time of year.

Tendency

As a consequence of mild temperatures the snow drift accumulations will stabilise during the next few days. The avalanche danger will decrease.

Danger Level 1 - Low



Tendency: Constant avalanche danger →
on Wednesday 26 01 2022

Wind slabs require caution.

The fresh and older wind slabs can be released in isolated cases, but mostly only by large additional loads, in particular on steep shady slopes.

In steep terrain there is a danger of falling on the hard snow surface.

Snowpack

Danger patterns

dp.6: cold, loose snow and wind

On Tuesday the wind will be moderate to strong in some cases. The wind will transport the snow. The fresh and older wind slabs are lying on soft layers in particular on shady slopes above the tree line, in particular in places that are protected from the wind. The old snowpack will be subject to considerable local variations.

Towards its surface, the snowpack consists of faceted crystals, in particular on shady slopes.

Only a small amount of snow is lying for the time of year.

Tendency

As a consequence of mild temperatures the snow drift accumulations will stabilise during the next few days.