



Danger Level 3 - Considerable



Tendency: Constant avalanche danger →

on Sunday 27 02 2022

Weak layers in the old snowpack necessitate caution.

Avalanches can in some places be released in the weakly bonded old snow, even by a single winter sport participant, in particular on steep west, north and east facing slopes between approximately 2200 and 2600 m. Caution is to be exercised at transitions from a shallow to a deep snowpack, when entering gullies and bowls for example. Avalanches can in some cases reach quite a large size.

In addition the fresh wind slabs are capable of being triggered in some locations. Adjacent to ridgelines and in gullies and bowls the avalanche prone locations are more prevalent.

Snowpack

Danger patterns

dp.7: snow-poor zones in snow-rich surrounding

dp.6: cold, loose snow and wind

In its middle, the snowpack is faceted and weak, especially on shady slopes between approximately 2200 and 2600 m. Snow profiles and stability tests confirm this situation.

As a consequence of the occasionally strong northerly wind, fresh snow drift accumulations will form on Saturday. The fresh wind slabs are poorly bonded with the old snowpack especially on wind-protected shady slopes.

Tendency

The avalanche danger will decrease gradually.

Danger Level 2 - Moderate



Tendency: Constant avalanche danger →
on Sunday 27 02 2022

Weak layers in the old snowpack necessitate caution.

Avalanches can in some places be released in the weakly bonded old snow, in particular by large additional loads, especially on very steep west, north and east facing slopes between approximately 2200 and 2600 m. Caution is to be exercised at transitions from a shallow to a deep snowpack, when entering gullies and bowls for example. Mostly avalanches are medium-sized. They can in very isolated cases reach large size. In addition the fresh wind slabs at elevated altitudes are prone to triggering in some cases. Adjacent to ridgelines and in gullies and bowls the avalanche prone locations are more prevalent. They are easy to recognise.

Snowpack

Danger patterns

dp.7: snow-poor zones in snow-rich surrounding

dp.6: cold, loose snow and wind

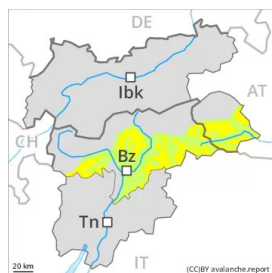
In its middle, the snowpack is faceted and weak, especially on shady slopes between approximately 2200 and 2600 m. Snow profiles and stability tests confirm this situation.

Some snow will fall in some regions. As a consequence of the occasionally strong northerly wind, fresh snow drift accumulations will form on Saturday. These are poorly bonded with the old snowpack especially on wind-protected shady slopes, in particular at elevated altitudes.

Tendency

The avalanche danger will persist.

Danger Level 2 - Moderate



Tendency: Decreasing avalanche danger
on Sunday 27 02 2022



Wind slabs require caution.

The various wind slabs are in some cases still prone to triggering. They can be released by a single winter sport participant especially on steep shady slopes above approximately 2400 m. Caution is to be exercised in places that are protected from the wind, as well as in gullies and bowls, and behind abrupt changes in the terrain. The wind slabs are mostly easy to recognise.

Avalanches can in very isolated cases be released in the old snowpack, in particular by large additional loads. This applies at transitions from a shallow to a deep snowpack, when entering gullies and bowls for example, and on extremely steep slopes at elevated altitudes. Avalanches can reach medium size.

Snowpack

Danger patterns

dp.6: cold, loose snow and wind

dp.7: snow-poor zones in snow-rich surrounding

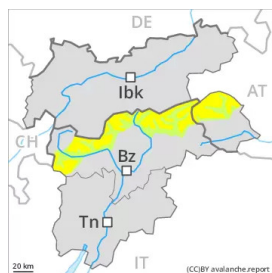
As a consequence of the occasionally strong northerly wind, fresh snow drift accumulations will form on Saturday. They are mostly rather small. The various wind slabs are poorly bonded with the old snowpack especially on wind-protected shady slopes.

The old snowpack will be prone to triggering in some places, especially in areas where the snow cover is rather shallow at elevated altitudes.

Tendency

As a consequence of solar radiation and the moderate wind, the snow drift accumulations will stabilise on Sunday.

Danger Level 2 - Moderate



Tendency: Decreasing avalanche danger
on Sunday 27 02 2022



Wind slabs are to be evaluated with care and prudence.

The various wind slabs are in some cases still prone to triggering. They can be released by a single winter sport participant especially on steep shady slopes above approximately 2400 m. Caution is to be exercised in places that are protected from the wind, as well as in gullies and bowls, and behind abrupt changes in the terrain. The wind slabs are mostly easy to recognise.

Avalanches can in isolated cases be released in the old snowpack, in particular by large additional loads. This applies at transitions from a shallow to a deep snowpack, when entering gullies and bowls for example, and on extremely steep slopes at elevated altitudes. Avalanches can reach medium size.

Snowpack

Danger patterns

dp.6: cold, loose snow and wind

dp.7: snow-poor zones in snow-rich surrounding

As a consequence of the occasionally strong northerly wind, fresh snow drift accumulations will form on Saturday. They are mostly rather small. The various wind slabs are poorly bonded with the old snowpack especially on wind-protected shady slopes.

The old snowpack will be prone to triggering in some places, especially in areas where the snow cover is rather shallow at elevated altitudes.

Tendency

As a consequence of solar radiation and the moderate wind, the snow drift accumulations will stabilise on Sunday.