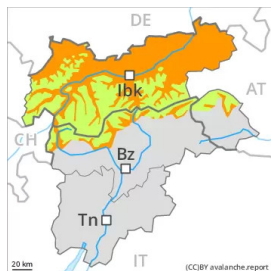


Danger Level 3 - Considerable



Tendency: Constant avalanche danger →

on Saturday 19 03 2022

Wet and gliding avalanches are still possible.

Wet avalanches can over a wide area be released by people and reach medium size. More medium-sized and, in isolated cases, large natural wet avalanches are possible. This applies on steep east, south and west facing slopes below approximately 2600 m, as well as in all aspects at intermediate altitudes. Caution is to be exercised in particular in areas where the snow cover is rather shallow. Here the snowpack is weaker.

In addition an appreciable danger of gliding avalanches exists. This applies on steep grassy slopes in the regions with a lot of snow. The gliding avalanches can be released naturally and reach large size in isolated cases. Areas with glide cracks are to be avoided as far as possible.

Snowpack

Danger patterns

dp.10: springtime scenario

dp.2: gliding snow

East, south and west facing slopes as well as low and intermediate altitudes:

The snowpack is wet all the way through. Outgoing longwave radiation during the night will be barely evident. The surface of the snowpack will freeze very little. Little rain will fall in some localities.

Shady slopes and high Alpine regions:

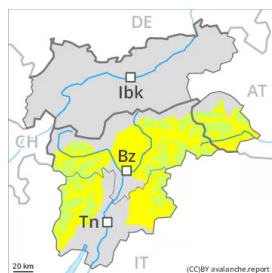
The snowpack will be generally stable.

Snow depths vary greatly, depending on the influence of the wind. In particular in the south as well as at low and intermediate altitudes only a little snow is now lying, especially on sunny slopes.

Tendency

Hardly any decrease in danger of wet avalanches.

Danger Level 2 - Moderate



Tendency: Constant avalanche danger →
on Saturday 19 03 2022

Wet and gliding avalanches are still possible.

Wet avalanches can in some places be released by people and reach medium size. This applies on steep east, south and west facing slopes below approximately 2600 m, as well as in all aspects at intermediate altitudes. Caution is to be exercised in particular in areas where the snow cover is rather shallow. Here the snowpack is weaker.

In addition an appreciable danger of gliding avalanches exists. This applies on steep grassy slopes in the regions with a lot of snow. The gliding avalanches can be released naturally and reach quite a large size. Areas with glide cracks are to be avoided as far as possible.

Snowpack

Danger patterns

dp.10: springtime scenario

dp.2: gliding snow

East, south and west facing slopes as well as low and intermediate altitudes:

The snowpack is wet all the way through. Outgoing longwave radiation during the night will be barely evident. The surface of the snowpack will freeze very little. Little rain will fall in some localities.

Shady slopes and high Alpine regions:

The snowpack will be generally stable.

Snow depths vary greatly, depending on the influence of the wind. In particular in the south as well as at low and intermediate altitudes only a little snow is now lying, especially on sunny slopes.

Tendency

Hardly any decrease in danger of wet avalanches.

Danger Level 1 - Low



Tendency: Constant avalanche danger →
on Saturday 19 03 2022

Over a wide area from a snow sport perspective, insufficient snow is lying. Wet snow requires caution.

The surface of the snowpack will only just freeze and will already be soft in the early morning. The danger of wet and gliding avalanches will persist, especially on steep east, south and west facing slopes. Mostly avalanches are only small but can be released in some cases even by a single winter sport participant. Caution is to be exercised in particular in areas where the snow cover is rather shallow. At the Latemar the avalanche prone locations are a little more prevalent and the danger is greater.

Snowpack

Danger patterns

dp.10: springtime scenario

As a consequence of very cloudy skies the snowpack can not consolidate during the night. The surface of the snowpack will freeze very little. The snowpack will be wet all the way through especially on east, south and west facing slopes.

In particular on steep sunny slopes as well as at low and intermediate altitudes only a little snow is now lying.

Tendency

Wet avalanches are still possible.