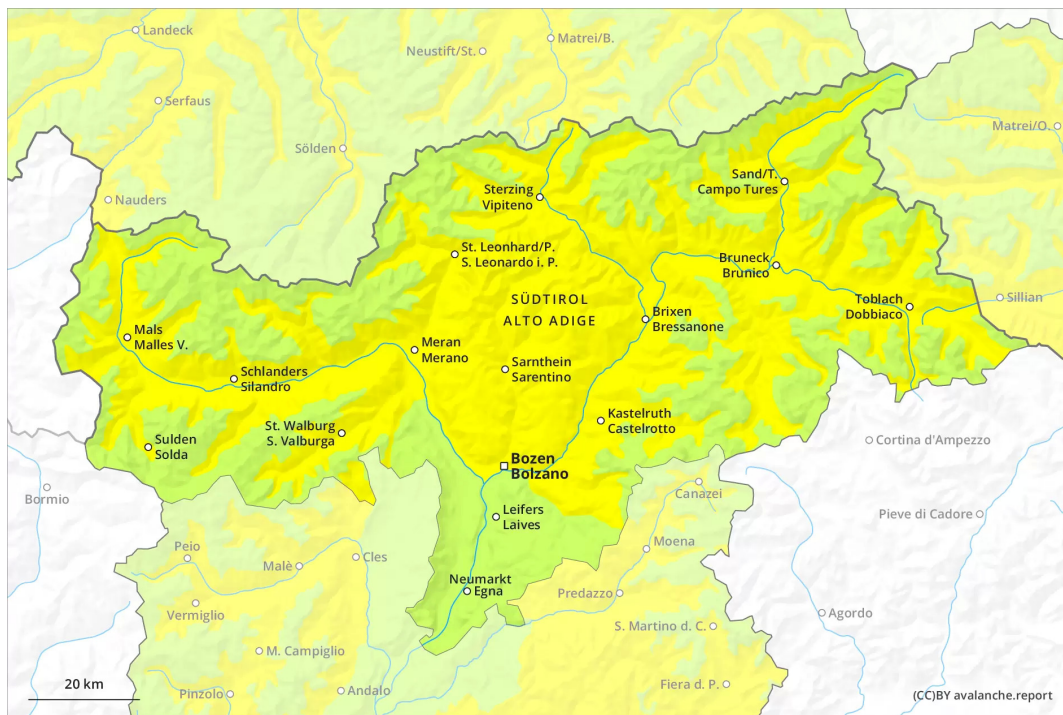
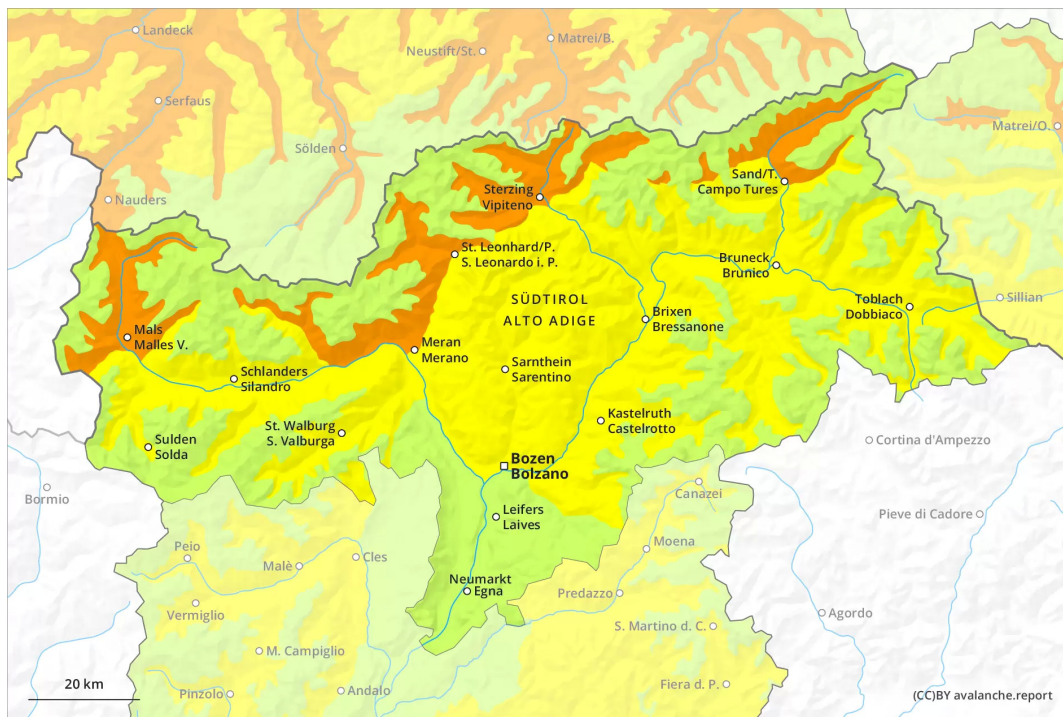




AM

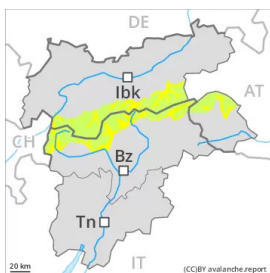


PM



Danger Level 3 - Considerable

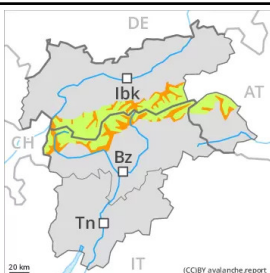
AM:



Tendency: Decreasing avalanche danger
on Monday 21 03 2022



PM:



Tendency: Decreasing avalanche danger
on Monday 21 03 2022



The danger of wet avalanches will already be elevated in the early morning.

Wet avalanches can as before be released, even by a single winter sport participant. This applies especially on steep sunny slopes below approximately 2600 m, as well as in all aspects at intermediate altitudes. As a consequence of warming, the activity of wet avalanches will increase. As the day progresses medium-sized and, in isolated cases, large wet and gliding avalanches are possible. In the regions where the outgoing longwave radiation during the night is reduced the danger will already exist in the morning. Backcountry tours should be started early and concluded timely.

Snowpack

Danger patterns

dp.10: springtime scenario

dp.2: gliding snow

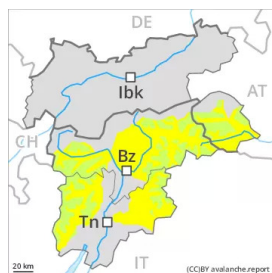
Some rain fell on Saturday in some localities. Outgoing longwave radiation during the night will be reduced over a wide area. As a consequence of low stratus no crust will develop on the surface during the night. In the other regions the snowpack will only just freeze. Sunshine and high temperatures will give rise as the day progresses to rapid softening of the snowpack in particular on steep sunny slopes below approximately 2600 m. In areas where the snow cover is rather shallow the snowpack will soften more quickly.

Snow depths vary greatly, depending on the influence of the wind.

Tendency

The conditions are spring-like. Increase in danger of wet and gliding avalanches in the course of the day.

Danger Level 2 - Moderate



Tendency: Constant avalanche danger →

on Monday 21 03 2022

Wet small and medium sized avalanches are still possible.

Wet avalanches can in some places be released by people and reach medium size. This applies on steep east, south and west facing slopes below approximately 2600 m, as well as in all aspects at intermediate altitudes. In the regions where the outgoing longwave radiation during the night is reduced the danger will already exist in the morning.

In addition further individual gliding avalanches are possible. This applies on steep grassy slopes in the regions with a lot of snow.

Snowpack

Danger patterns

dp.10: springtime scenario

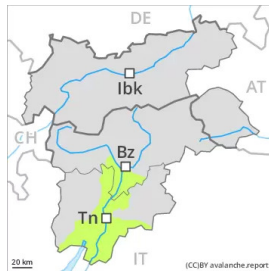
Outgoing longwave radiation during the night will be reduced in some places. As a consequence of low stratus no crust will develop on the surface during the night. In the other regions the snowpack will only just freeze. Sunshine and high temperatures will give rise as the day progresses to rapid softening of the snowpack in particular on steep sunny slopes below approximately 2600 m. In areas where the snow cover is rather shallow the snowpack will soften more quickly.

Snow depths vary greatly, depending on the influence of the wind. In particular in the south less snow than usual is lying at intermediate altitudes.

Tendency

The conditions are spring-like. Increase in danger of wet avalanches in the course of the day.

Danger Level 1 - Low



Tendency: Constant avalanche danger →
on Monday 21 03 2022

Over a wide area from a snow sport perspective, insufficient snow is lying. Wet snow requires caution.

The surface of the snowpack will only just freeze and will already soften in the late morning. The danger of wet and gliding avalanches will persist, especially on steep east, south and west facing slopes. Mostly avalanches are only small but can be released in some cases even by a single winter sport participant. Caution is to be exercised in particular in areas where the snow cover is rather shallow. At the Latemar the avalanche prone locations are a little more prevalent and the danger is greater.

Snowpack

Danger patterns

dp.10: springtime scenario

Outgoing longwave radiation during the night will be reduced in some case. As a consequence of low stratus no crust will develop on the surface during the night. In the other regions the snowpack will only just freeze. Sunshine and high temperatures will give rise as the day progresses to rapid and thorough wetting of the snowpack in particular on steep sunny slopes below approximately 2600 m. In areas where the snow cover is rather shallow the snowpack will soften more quickly.

Only a little snow is now lying.

Tendency

The conditions are spring-like. Increase in danger of wet avalanches in the course of the day.