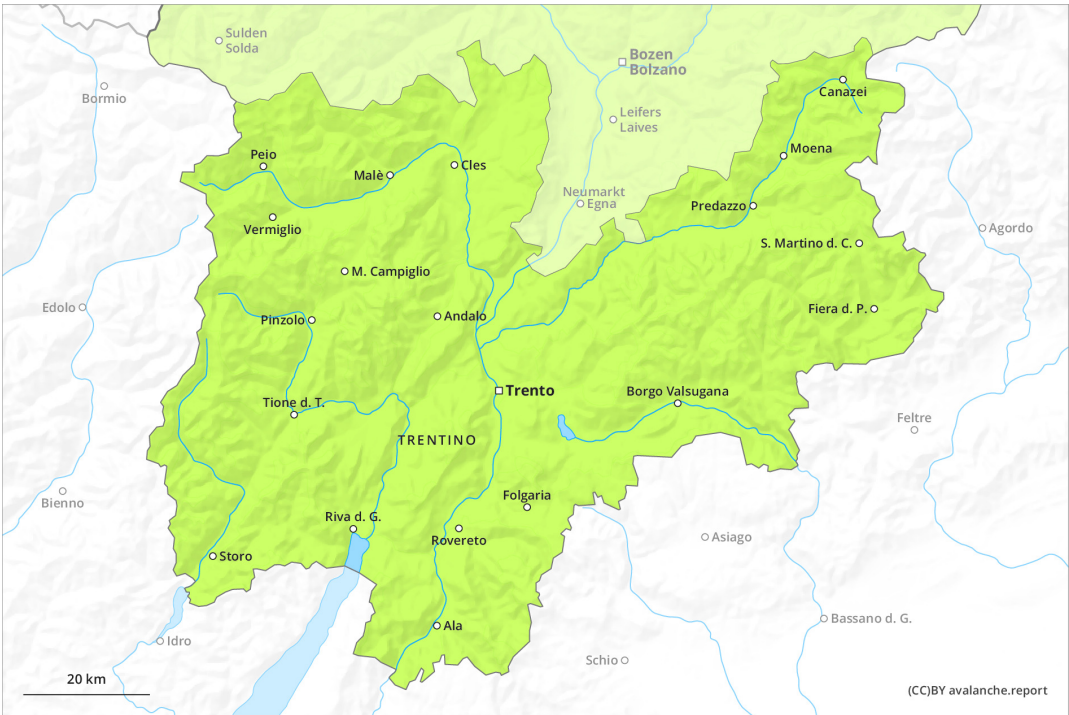
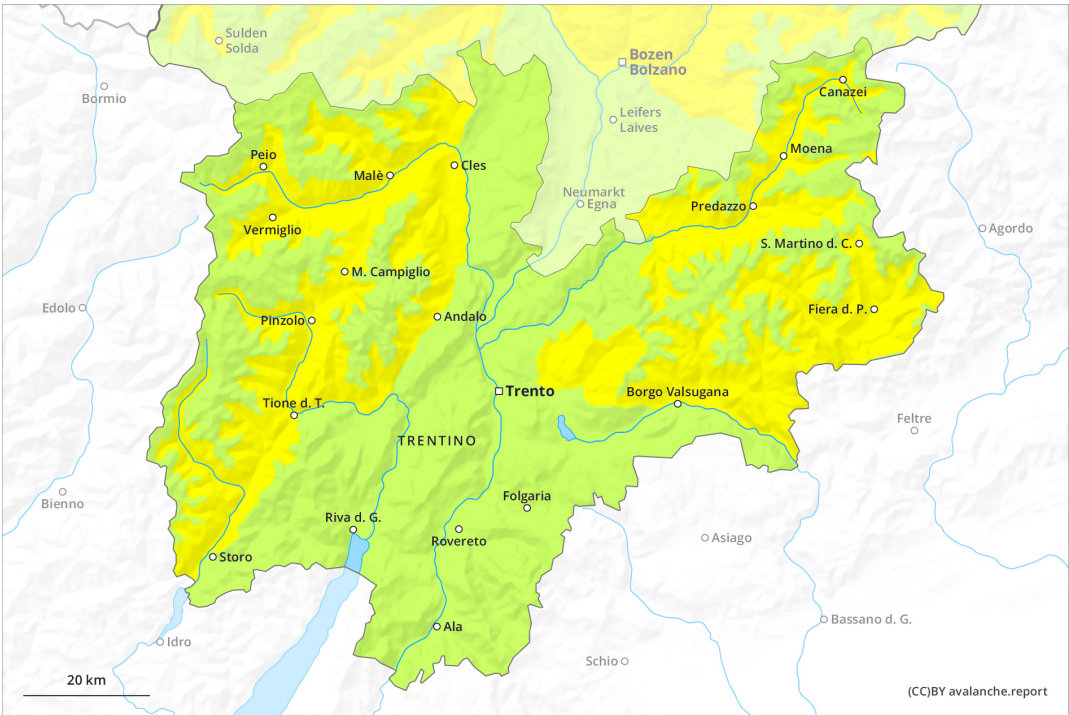


AM



PM



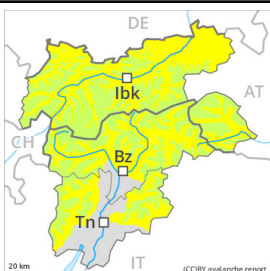
## Danger Level 2 - Moderate

**AM:**



**Tendency: Constant avalanche danger** →  
on Tuesday 22 03 2022

**PM:**



**Tendency: Constant avalanche danger** →  
on Tuesday 22 03 2022



Wet snow



### The conditions are spring-like.

The early morning will see favourable conditions generally. As a consequence of warming during the day and solar radiation small to medium-sized wet and gliding avalanches are possible below approximately 2400 m. This applies in particular on steep east, south and west facing slopes, as well as in all aspects at intermediate altitudes. Wet avalanches can in some places be released by people.

In addition further individual gliding avalanches are possible. This applies on steep grassy slopes in the regions with a lot of snow.

Backcountry tours should be started early and concluded timely.

### Snowpack

**Danger patterns**

dp.10: springtime scenario

Outgoing longwave radiation during the night will be good over a wide area. The surface of the snowpack will freeze to form a strong crust and will soften during the day. Sunshine and high temperatures will give rise as the day progresses to softening of the snowpack in particular on steep sunny slopes below approximately 2400 m. In areas where the snow cover is rather shallow the snowpack will soften more quickly.

In particular in the south less snow than usual is lying.

### Tendency

The conditions remain spring-like. Increase in danger of wet avalanches in the course of the day.

## Danger Level 1 - Low



**Tendency: Constant avalanche danger** →  
on Tuesday 22 03 2022

Over a wide area from a snow sport perspective, insufficient snow is lying. Wet snow requires caution.

The early morning will see favourable conditions over a wide area. The danger of wet and gliding avalanches will increase a little during the day, especially on steep east, south and west facing slopes. Mostly avalanches are only small and can be released in isolated cases by a single winter sport participant. At the Latemar the avalanche prone locations are a little more prevalent and the danger is greater.

## Snowpack

### Danger patterns

dp.10: springtime scenario

Outgoing longwave radiation during the night will be good over a wide area. The surface of the snowpack will freeze to form a strong crust. Sunshine and high temperatures will give rise as the day progresses to softening of the snowpack in particular on steep sunny slopes.

Only a little snow is now lying.

## Tendency

The conditions remain spring-like.