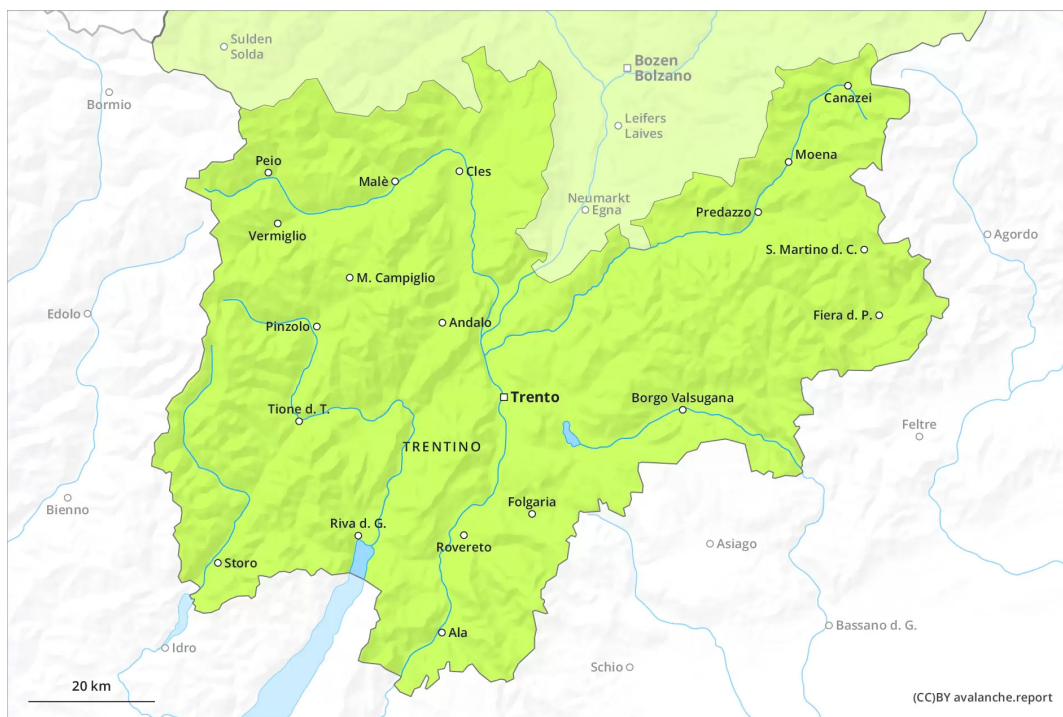
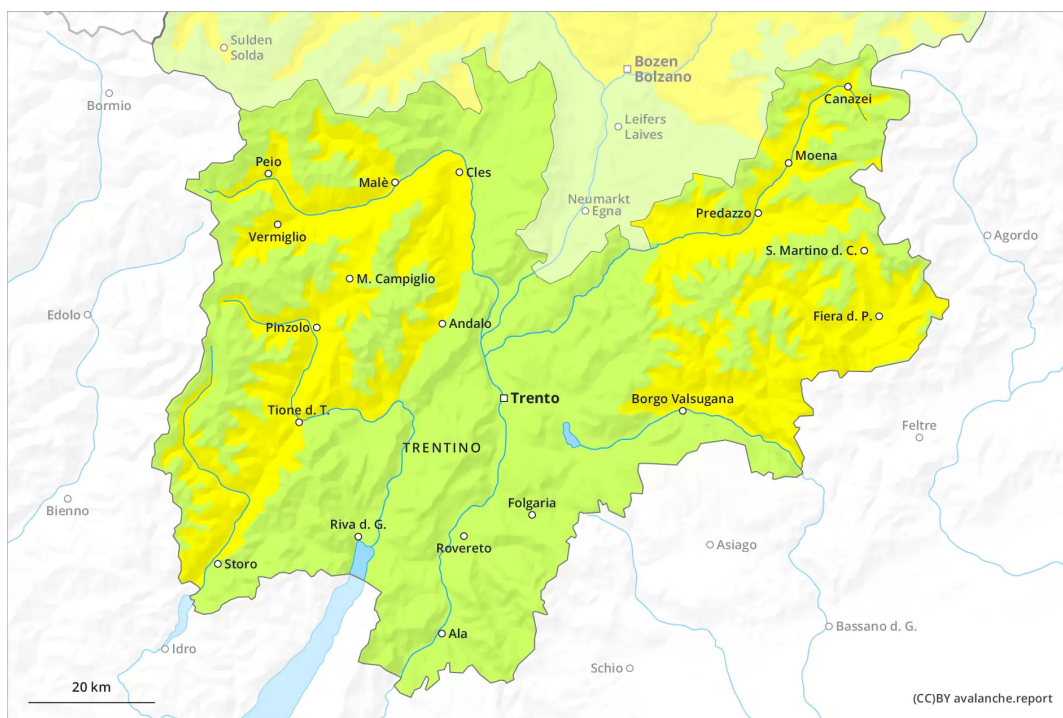




AM



PM



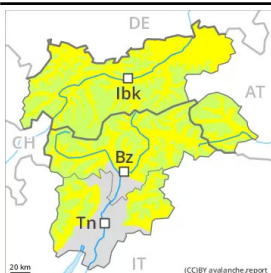
Danger Level 2 - Moderate

AM:



Tendency: Constant avalanche danger →
on Sunday 27 03 2022

PM:



Tendency: Constant avalanche danger →
on Sunday 27 03 2022

The avalanche danger will increase a little during the day.

A clear night will be followed in the early morning by favourable conditions generally. There is a danger of falling on the hard snow surface. As the day progresses as a consequence of warming during the day and solar radiation there will be only a slight increase in the avalanche danger. As the moisture increases individual wet avalanches are possible, but they will be mostly small, this applies in case of a single winter sport participant, especially on steep east, south and west facing slopes below approximately 2400 m. In addition very occasional gliding avalanches and snow slides are possible.

Backcountry tours should be concluded timely.

Snowpack

Danger patterns

dp.10: springtime scenario

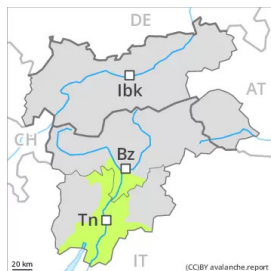
Outgoing longwave radiation during the night will be good over a wide area. The surface of the snowpack will freeze to form a strong crust and will soften during the day. Sunshine and high temperatures will give rise as the day progresses to softening of the snowpack on very steep sunny slopes.

Less snow than usual is lying.

Tendency

The conditions remain spring-like. Slight increase in danger of wet avalanches in the course of the day.

Danger Level 1 - Low



Tendency: Constant avalanche danger →
on Sunday 27 03 2022

Over a wide area from a snow sport perspective, insufficient snow is lying. Wet snow requires caution.

A clear night will be followed in the early morning by favourable conditions over a wide area. The danger of moist and wet snow slides will increase a little during the day.

Snowpack

Danger patterns

dp.10: springtime scenario

Only a little snow is now lying.

Outgoing longwave radiation during the night will be good over a wide area. The surface of the snowpack will freeze to form a strong crust. Sunshine and high temperatures will give rise as the day progresses to softening of the snowpack in particular on steep sunny slopes.

Tendency

The conditions remain spring-like.