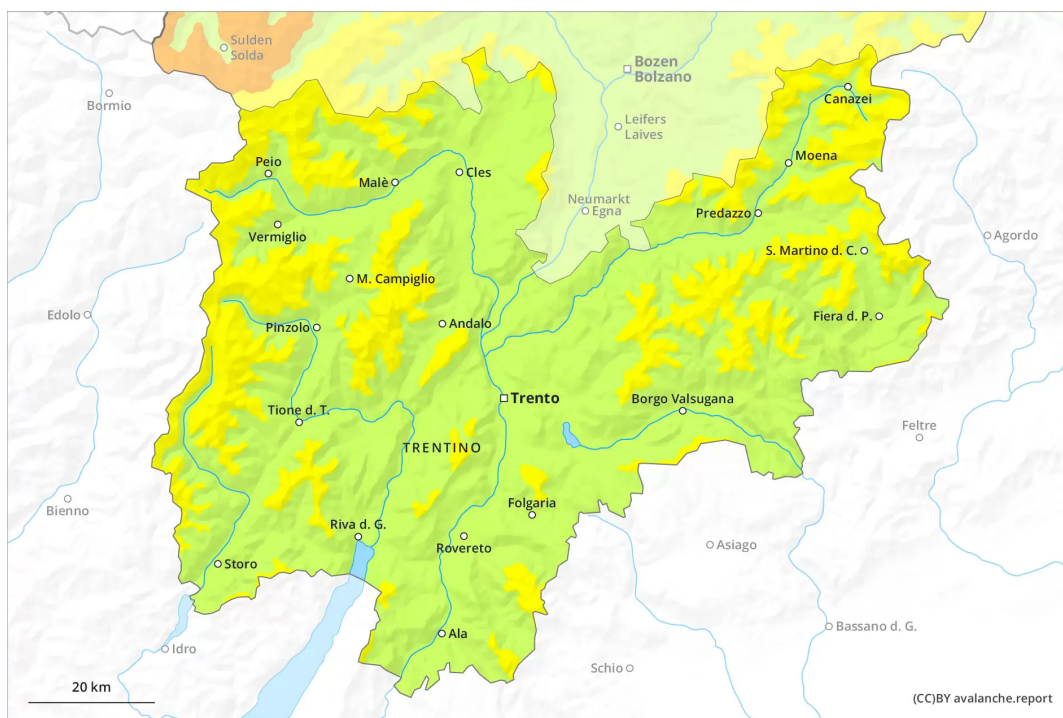




# AM



# PM



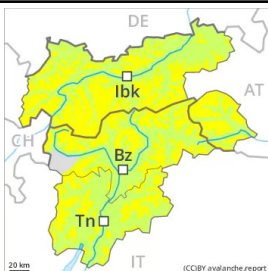
## Danger Level 2 - Moderate

**AM:**



**Tendency: Constant avalanche danger** →  
on Saturday 02 04 2022

**PM:**



**Tendency: Constant avalanche danger** →  
on Saturday 02 04 2022

Gradual increase in danger of dry avalanches as a consequence of new snow and wind.

High altitudes and the high Alpine regions: Fresh wind slabs require caution. The avalanche prone locations are to be found in particular on very steep shady slopes and adjacent to ridgelines. Mostly avalanches are only small but can be released in isolated cases by a single winter sport participant.

On steep grassy slopes individual gliding avalanches are possible towards the evening, in particular in the regions exposed to heavier precipitation.

## Snowpack

**Danger patterns**

dp.6: cold, loose snow and wind

10 to 30 cm of snow, and even more in some localities, will fall on Friday. The wind will be light to moderate. The wind slabs are in some cases prone to triggering on very steep shady slopes. This applies in the regions exposed to heavier precipitation adjacent to ridgelines.

## Tendency

Some snow will fall on Saturday in some localities. Fresh wind slabs require caution.