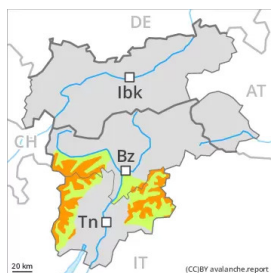


Danger Level 3 - Considerable



Tendency: Constant avalanche danger →
on Sunday 03 04 2022

Fresh wind slabs require caution.

As a consequence of new snow and a light to moderate wind from variable directions, wind slabs formed. These can in some places be released by a single winter sport participant and reach large size in isolated cases. Caution is to be exercised in particular adjacent to ridgelines in all aspects on very steep slopes at high altitudes and in high Alpine regions.

In addition very occasional gliding avalanches and snow slides are possible, especially on very steep grassy slopes.

Snowpack

Danger patterns

dp.6: cold, loose snow and wind

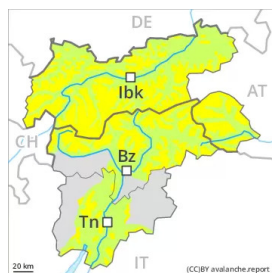
20 to 40 cm of snow, and even more in some localities, has fallen. 10 to 30 cm of snow, and even more in some localities, will fall on Saturday. In some cases the amount of snow is subject to significant local variations. The wind will be light to moderate. The wind slabs are lying on soft layers.

Tendency

Fresh wind slabs require caution. Loose snow avalanches are possible, in the event of solar radiation in particular.



Danger Level 2 - Moderate



Tendency: Constant avalanche danger →
on Sunday 03 04 2022

Fresh wind slabs require caution.

As a consequence of new snow and a light to moderate wind from variable directions, wind slabs formed. These can in some places be released by a single winter sport participant and reach medium size. Caution is to be exercised in particular adjacent to ridgelines in all aspects on very steep slopes at high altitudes and in high Alpine regions.

In addition very occasional gliding avalanches and snow slides are possible, especially in the regions exposed to heavier precipitation on very steep grassy slopes.

Snowpack

Danger patterns

dp.6: cold, loose snow and wind

10 to 20 cm of snow, and even more in some localities, has fallen. 10 to 30 cm of snow, and even more in some localities, will fall on Saturday. In some cases the amount of snow is subject to significant local variations. The wind will be light to moderate. The wind slabs are lying on soft layers.

Tendency

Fresh wind slabs require caution. Loose snow avalanches are possible, in the event of solar radiation in particular.