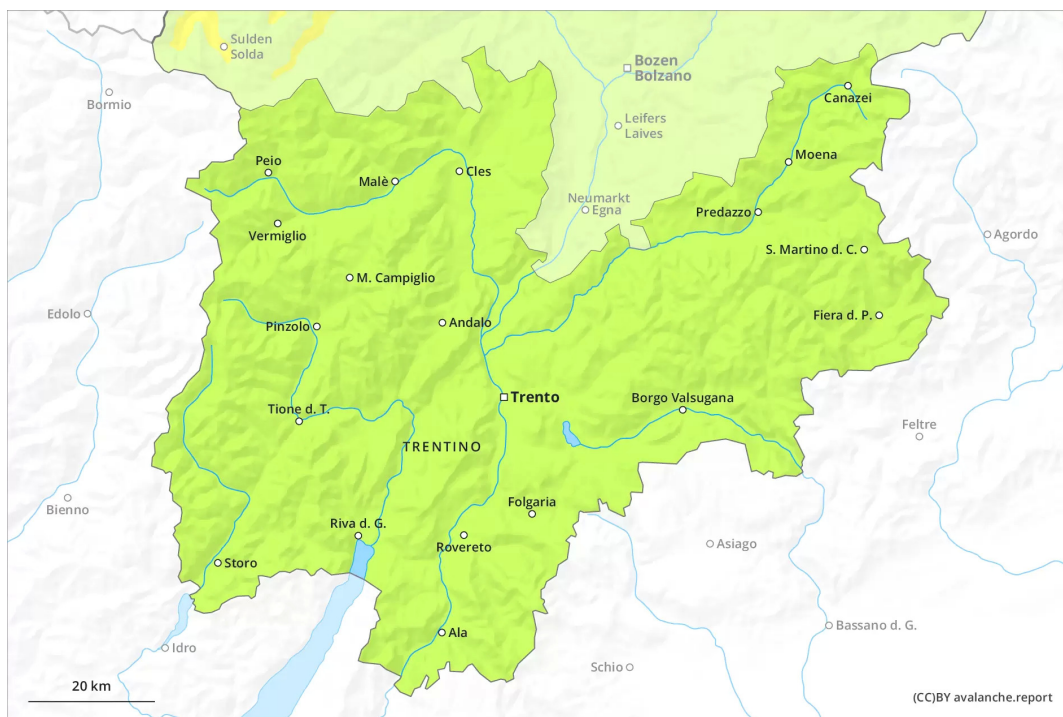
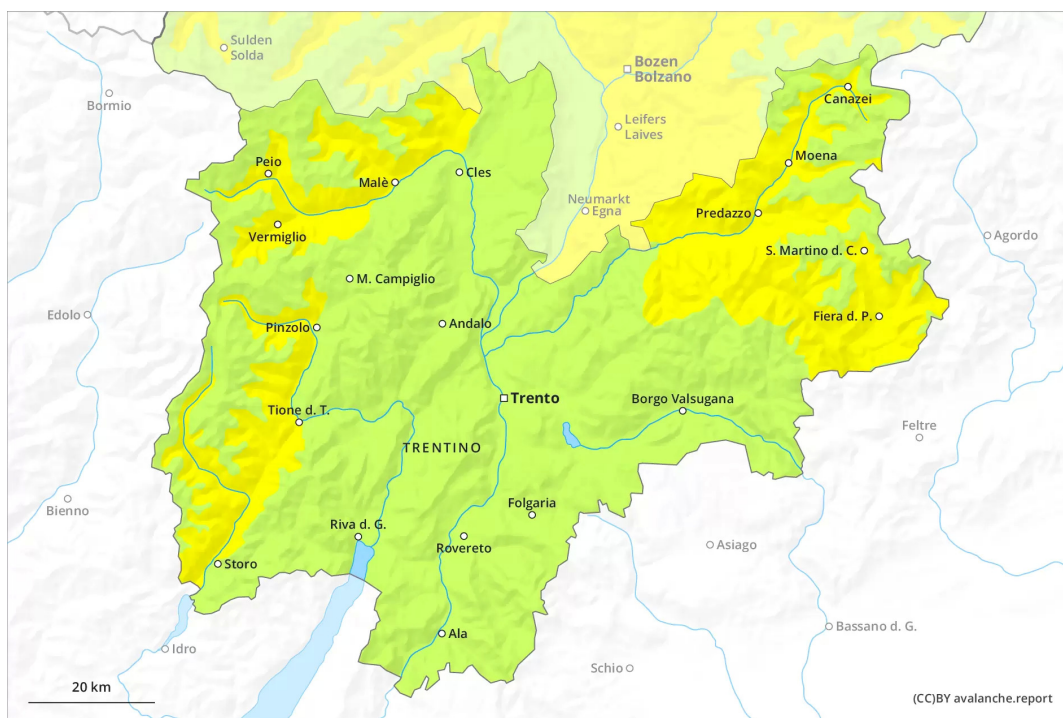




AM

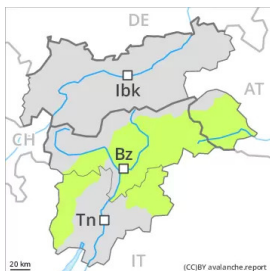


PM



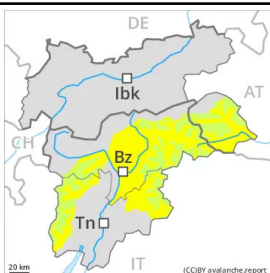
Danger Level 2 - Moderate

AM:



Tendency: Constant avalanche danger →
on Sunday 17 04 2022

PM:



Tendency: Constant avalanche danger →
on Sunday 17 04 2022

The backcountry touring conditions are spring-like.

The early morning will see quite favourable conditions mostly. Avalanche prone locations for dry avalanches are to be found in particular on very steep northwest, north and northeast facing slopes above approximately 2600 m. These avalanche prone locations are very rare.

As a consequence of warming during the day and solar radiation there will be only a slight increase in the danger of wet avalanches. This applies in particular on west, south and east facing slopes at high altitude, as well as on shady slopes below approximately 2200 m.

Backcountry tours should be concluded timely.

Snowpack

Danger patterns

dp.10: springtime scenario

Individual weak layers exist in the top section of the snowpack on steep northwest, north and northeast facing slopes. This applies in particular above approximately 2600 m. Towards its base, the snowpack is well consolidated.

During the night the weather will be partly cloudy. The surface of the snowpack will freeze to form a strong crust only at high altitudes and will soften during the day. The spring-like weather conditions as the day progresses will give rise to a loss of strength within the snowpack. This applies on steep sunny slopes, as well as on shady slopes below approximately 2200 m. Only a little snow is now lying.

Tendency

The backcountry touring conditions are favourable.

Danger Level 1 - Low



Tendency: Constant avalanche danger →
on Sunday 17 04 2022

The conditions are spring-like.

The early morning will see favourable conditions generally. As a consequence of warming during the day and solar radiation moist snow slides are possible.

Snowpack

Danger patterns

dp.10: springtime scenario

In all aspects as well as in all altitude zones only a little snow is now lying.

During the night the weather will be partly cloudy. The surface of the snowpack will freeze to form a strong crust only at high altitudes and will soften during the day.

Tendency

Decrease in danger of wet avalanches as the temperature drops.