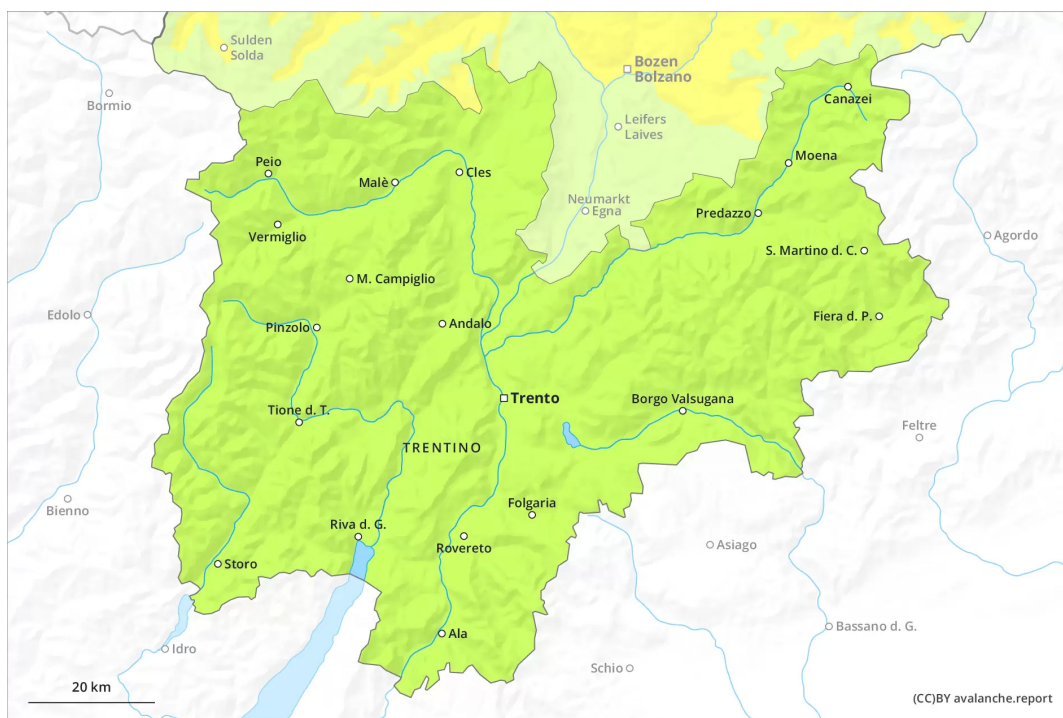




AM



PM





Danger Level 1 - Low



Tendency: Increasing avalanche danger
on Friday 22 04 2022



Wet and gliding avalanches require caution.

The backcountry touring conditions remain spring-like. The early morning will see favourable conditions mostly. As a consequence of warming there will be only a slight increase in the danger of wet avalanches, in particular on very steep sunny slopes below approximately 2400 m. Individual mostly small natural avalanches are possible. Backcountry tours should be concluded timely. Restraint should be exercised because avalanches can sweep people along and give rise to falls.

Snowpack

Danger patterns

dp.10: springtime scenario

On Thursday it will be very cloudy. The surface of the snowpack will only just freeze and will soften quickly. This applies in particular on steep slopes below approximately 2400 m. Towards its base, the snowpack is well consolidated. At low and intermediate altitudes from a snow sport perspective, insufficient snow is lying. From the afternoon the wind will be moderate to strong adjacent to ridgelines.

Tendency

On Friday it will be very cloudy. Some snow will fall until the afternoon in particular in the west and in the east. Until the afternoon the wind will be moderate to strong adjacent to ridgelines. The avalanche danger will increase a little during the day.