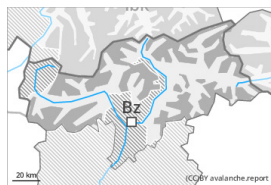




## Danger Level 3 - Considerable



**Tendency: Increasing avalanche danger**  
on Sunday 11 12 2022



Persistent  
weak layer



Snowpack stability: **very poor**  
Frequency: **some**  
Avalanche size: **medium**

### Distinct weak layers in the old snowpack necessitate caution and restraint.

Single winter sport participants can release avalanches easily.

Remotely triggered avalanches are possible in isolated cases, especially in the regions with a lot of snow.

Mostly the avalanches are small. On wind-loaded slopes medium-sized avalanches are possible.

The avalanche prone locations are to be found in all aspects above approximately 2500 m and on steep shady slopes above approximately 2000 m. Caution is to be exercised in gullies and bowls, and behind abrupt changes in the terrain, as well as adjacent to ridgelines in all aspects.

Whumpfung sounds and the formation of shooting cracks when stepping on the snowpack and fresh avalanches serve as an alarm indicating the danger. The avalanche prone locations are currently prevalent immediately adjacent to the pistes as well.

## Snowpack

### Danger patterns

dp.1: deep persistent weak layer

dp.8: surface hoar blanketed with snow

The old snowpack will be unstable over a wide area. Stability tests and field observations confirm the unfavourable bonding of the snowpack.

In the north 5 to 10 cm of snow, and even more in some localities, will fall on Saturday. The new snow will be deposited on surface hoar in some places.

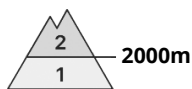
A little snow is lying.

## Tendency

As a consequence of new snow and wind the prevalence and size of the avalanche prone locations will increase.



## Danger Level 2 - Moderate



**Tendency: Increasing avalanche danger**  
on Sunday 11 12 2022



Persistent  
weak layer



Snowpack stability: **poor**

Frequency: **some**

Avalanche size: **small**

### Weak layers in the old snowpack necessitate caution and restraint.

Single winter sport participants can release avalanches in some places.

Mostly the avalanches are small.

The avalanche prone locations are to be found in particular on steep west, north and east facing slopes above approximately 2000 m. Caution is to be exercised in gullies and bowls, and behind abrupt changes in the terrain, as well as adjacent to ridgelines in all aspects.

Whumpung sounds and the formation of shooting cracks when stepping on the snowpack serve as an alarm indicating the danger. Even a small avalanche can sweep winter sport participants along and give rise to falls.

### Snowpack

#### Danger patterns

dp.1: deep persistent weak layer

dp.8: surface hoar blanketed with snow

The old snowpack will be unstable in some places.

5 to 10 cm of snow, and even more in some localities, will fall on Saturday. The new snow will be deposited on surface hoar in some places.

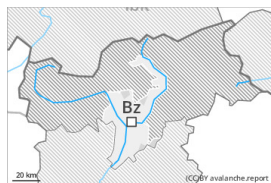
A little snow is lying.

### Tendency

As a consequence of new snow and wind the prevalence and size of the avalanche prone locations will increase.



## Danger Level 2 - Moderate



**Tendency: Increasing avalanche danger**  
on Sunday 11 12 2022



Persistent  
weak layer



Snowpack stability: **poor**  
Frequency: **some**  
Avalanche size: **small**

### Weak layers in the old snowpack necessitate caution and restraint.

Single winter sport participants can release avalanches in some places.

Mostly the avalanches are small.

The avalanche prone locations are to be found in particular on steep shady slopes above approximately 2000 m. Caution is to be exercised in gullies and bowls, and behind abrupt changes in the terrain, as well as adjacent to ridgelines in all aspects.

Whumpung sounds and the formation of shooting cracks when stepping on the snowpack serve as an alarm indicating the danger. Even a small avalanche can sweep winter sport participants along and give rise to falls.

### Snowpack

#### Danger patterns

dp.1: deep persistent weak layer

dp.8: surface hoar blanketed with snow

The old snowpack will be unstable in some places.

The new snow of Friday is poorly bonded with the old snowpack.

A little snow is lying.

### Tendency

As a consequence of the sometimes strong northerly wind the prevalence and size of the avalanche prone locations will increase.