

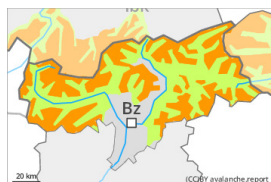
Danger Level 3 - Considerable



Treeline

Tendency: Constant avalanche danger →

on Monday 23 01 2023



Wind slab

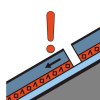


Treeline

Snowpack stability: **poor**

Frequency: **many**

Avalanche size: **medium**



Persistent weak layer



2200m

Snowpack stability: **poor**

Frequency: **some**

Avalanche size: **medium**

Considerable avalanche danger will persist. Wind slabs and weakly bonded old snow represent the main danger.

As a consequence of a strong to storm force wind from northerly directions, avalanche prone wind slabs formed since Friday over a wide area. The fresh wind slabs can be released easily, even by a single winter sport participant,. Mostly avalanches are medium-sized. The avalanche prone locations are to be found in all aspects above the tree line. They are barely recognisable because of the poor visibility. At elevated altitudes the avalanche prone locations are more prevalent. Remotely triggered avalanches are possible in isolated cases.

Additionally avalanches can also be released in deep layers. Such avalanche prone locations are to be found on steep, little used shady slopes above approximately 2200 m and on steep sunny slopes above approximately 2500 m. Especially transitions from a shallow to a deep snowpack are unfavourable. Backcountry touring and other off-piste activities call for caution and restraint.

Snowpack

Danger patterns

dp.6: cold, loose snow and wind

dp.1: deep persistent weak layer

In the north and in the northeast 5 to 10 cm of snow, and even more in some localities, has fallen. The wind was strong to storm force. Fresh wind slabs are lying on weak layers in all aspects above the tree line.

Faceted weak layers exist in the old snowpack, especially on shady slopes above approximately 2200 m, as well as on sunny slopes above approximately 2500 m.

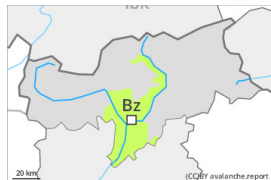
The snowpack remains quite prone to triggering. Whumpfung sounds and the formation of shooting cracks when stepping on the snowpack are a clear indication.

Tendency

Considerable avalanche danger will persist.

Some snow will fall on Monday especially in the south. The wind will be strong in some regions. Fresh wind slabs represent the main danger.

Danger Level 1 - Low



Tendency: Increasing avalanche danger

on Monday 23 01 2023



Wind slab



Treeline

Snowpack stability: **poor**

Frequency: **few**

Avalanche size: **small**

Individual avalanche prone locations for dry avalanches are to be found on very steep slopes above the tree line.

The small wind slabs of the last few days can be released by a single winter sport participant in isolated cases above the tree line. Individual avalanche prone locations are to be found adjacent to ridgelines and in gullies and bowls, especially on very steep slopes. They are easy to recognise. Restraint should be exercised because avalanches can sweep people along and give rise to falls.

Snowpack

Danger patterns

dp.6: cold, loose snow and wind

As a consequence of a gusty wind from northeasterly directions, mostly small wind slabs formed since Friday. In isolated cases wind slabs are lying on soft layers. From a snow sport perspective, in most cases insufficient snow is lying.

Tendency

Slight increase in danger of dry avalanches as a consequence of new snow and wind.