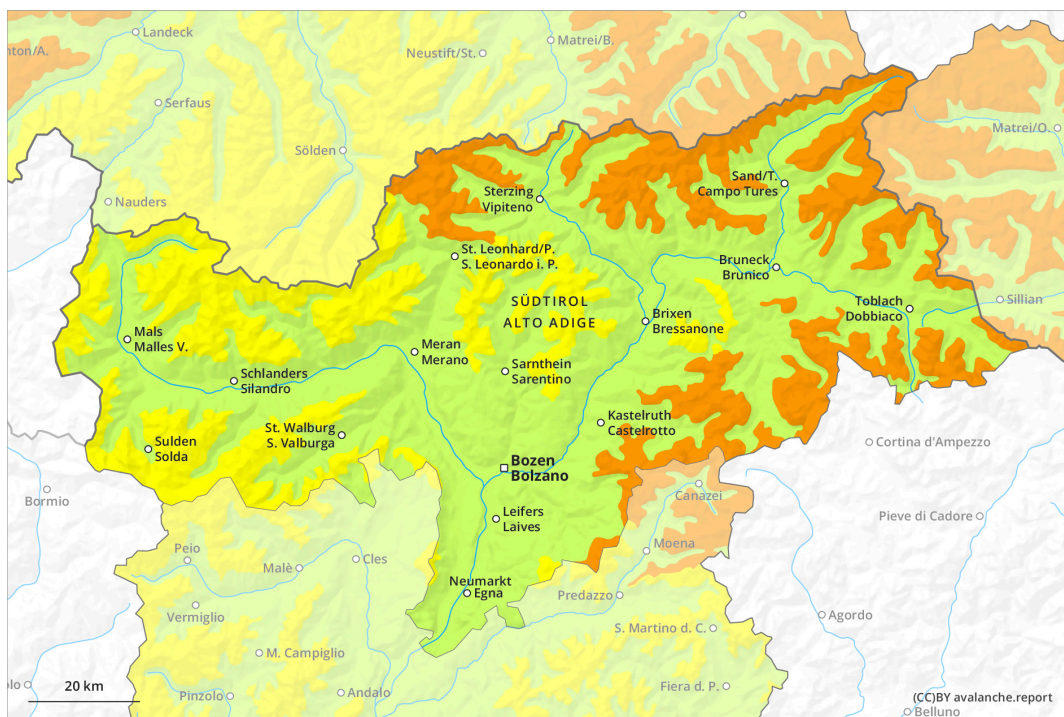
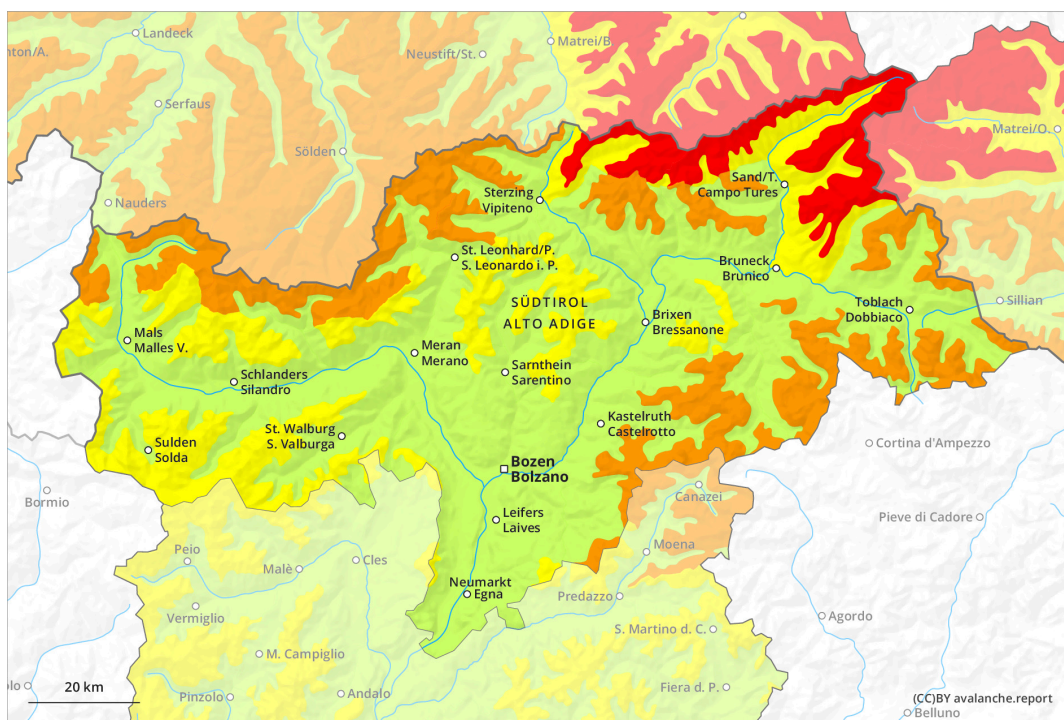




AM



PM



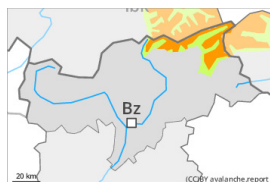


Danger Level 4 - High

AM:



Tendency: Constant avalanche danger →
 on Friday 03 02 2023



Wind slab



Treeline

Snowpack stability: **poor**
 Frequency: **many**
 Avalanche size: **medium**



Persistent weak layer



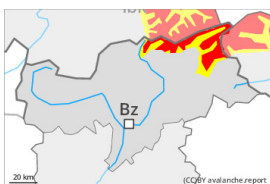
2200m

Snowpack stability: **poor**
 Frequency: **some**
 Avalanche size: **medium**

PM:



Tendency: Constant avalanche danger →
 on Friday 03 02 2023



New snow



Treeline

Snowpack stability: **very poor**
 Frequency: **many**
 Avalanche size: **large**



Persistent weak layer



Treeline

Snowpack stability: **poor**
 Frequency: **some**
 Avalanche size: **large**



New snow



Treeline

Snowpack stability: **very poor**
 Frequency: **some**
 Avalanche size: **small**

Sharp increase in avalanche danger as a consequence of new snow and strong wind. The conditions are critical for backcountry touring and other off-piste activities outside marked and open pistes.

The danger exists in particular in alpine snow sports terrain.

The new snow and wind slabs can be released easily, even by a single winter sport participant, in all aspects above the tree line. The avalanche prone locations are prevalent and are barely recognisable because of the poor visibility. Such avalanche prone locations are to be found also in areas close to the tree line. The number and size of avalanche prone locations will increase with altitude. In some cases avalanches are large. As a consequence of the snowfall natural avalanches are to be expected as the day progresses. Additionally avalanches can also penetrate deep layers. Such avalanche prone locations are to be found in steep terrain above the tree line.

Snowpack



Danger patterns

dp.6: cold, loose snow and wind

dp.1: deep persistent weak layer

Over a wide area 30 to 50 cm of snow, and even more in some localities, will fall on Thursday. The fresh snow as well as the wind slabs that are being formed by the storm force northwesterly wind will be deposited on soft layers in all aspects above the tree line. In some places new snow and wind slabs are lying on surface hoar, in particular on the Main Alpine Ridge and to the north. The snowpack will become increasingly prone to triggering.

Faceted weak layers exist in the snowpack, especially on steep slopes above the tree line. In shady places that are protected from the wind the snowpack is weaker.

Whumpfung sounds and the formation of shooting cracks when stepping on the snowpack indicate the existence of a weak snowpack.

Tendency

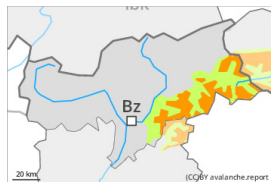
Great caution and restraint are required. The new snow and wind slabs remain for the foreseeable future prone to triggering. As a consequence of the strong to storm force northwesterly wind, the snow drift accumulations will increase in size on Friday. The avalanche prone locations are sometimes covered with new snow and are barely recognisable.

Danger Level 3 - Considerable



Treeline

Tendency: **Constant avalanche danger** →
on Friday 03 02 2023



Wind slab



Treeline

Snowpack stability: **poor**

Frequency: **many**

Avalanche size: **medium**



Persistent weak layer



2200m

Snowpack stability: **poor**

Frequency: **some**

Avalanche size: **medium**

Increase in avalanche danger as a consequence of new snow and stormy weather. Backcountry touring and other off-piste activities call for caution and restraint.

The fresh wind slabs can be released easily by a single winter sport participant in all aspects above the tree line. The avalanche prone locations are quite prevalent and are barely recognisable because of the poor visibility. Individual avalanche prone locations are to be found also in areas close to the tree line. The number and size of avalanche prone locations will increase with altitude. The avalanche danger will increase but remain within the current danger level. Mostly avalanches are medium-sized. Additionally avalanches can also be released in deep layers. Such avalanche prone locations are to be found on steep, little used shady slopes above approximately 2200 m and on steep sunny slopes above approximately 2500 m.

Snowpack

Danger patterns

dp.6: cold, loose snow and wind

dp.1: deep persistent weak layer

In some regions up to 20 cm of snow, and even more in some localities, will fall on Thursday. In the south less snow will fall.

The fresh snow as well as the wind slabs that are being formed by the storm force northwesterly wind will be deposited on soft layers in all aspects above the tree line. In some places various wind slab layers are lying on surface hoar, in particular in shady places that are protected from the wind. The snowpack will become increasingly prone to triggering.

Faceted weak layers exist in the old snowpack, especially on shady slopes above approximately 2200 m, as well as on sunny slopes above approximately 2500 m.

Whumpung sounds and the formation of shooting cracks when stepping on the snowpack indicate the existence of a weak snowpack.

Tendency



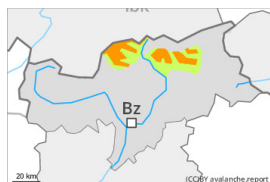
Restraint is recommended. The new snow and wind slabs remain for the foreseeable future prone to triggering.

Danger Level 3 - Considerable

AM:



Tendency: Constant avalanche danger →
 on Friday 03 02 2023



Wind slab



Treeline

Snowpack stability: **poor**

Frequency: **many**

Avalanche size: **medium**



Persistent weak layer



2200m

Snowpack stability: **poor**

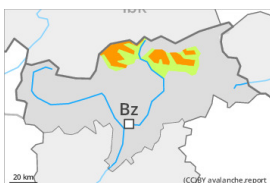
Frequency: **some**

Avalanche size: **medium**

PM:



Tendency: Constant avalanche danger →
 on Friday 03 02 2023



New snow

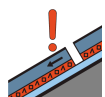


Treeline

Snowpack stability: **very poor**

Frequency: **many**

Avalanche size: **medium**



Persistent weak layer



Treeline

Snowpack stability: **poor**

Frequency: **some**

Avalanche size: **medium**

Increase in avalanche danger as the snowfall becomes more intense.

The new snow and wind slabs can be released easily, even by a single winter sport participant, in all aspects above the tree line. The avalanche prone locations are quite prevalent and are barely recognisable because of the poor visibility. Individual avalanche prone locations are to be found also in areas close to the tree line. The prevalence of avalanche prone locations and likelihood of triggering will increase with altitude. Remotely triggered avalanches are possible. Mostly avalanches are medium-sized. Additionally avalanches can also penetrate deep layers. Such avalanche prone locations are to be found in steep terrain above the tree line.

Snowpack

Danger patterns

dp.6: cold, loose snow and wind

dp.1: deep persistent weak layer

Over a wide area 10 to 30 cm of snow will fall on Thursday. The fresh snow as well as the wind slabs that are being formed by the storm force northwesterly wind will be deposited on soft layers in all aspects above the tree line. In some places new snow and wind slabs are lying on surface hoar, in particular on the Main Alpine Ridge. The snowpack will become increasingly prone to triggering. In shady places that are protected from the wind the snowpack is weaker.



Faceted weak layers exist in the snowpack, especially on steep slopes above the tree line. Whumpfung sounds and the formation of shooting cracks when stepping on the snowpack indicate the existence of a weak snowack.

Tendency

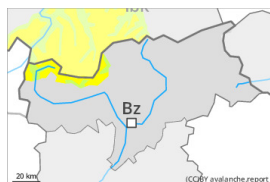
Restraint is recommended. The new snow and wind slabs remain for the foreseeable future prone to triggering. As a consequence of the strong to storm force northwesterly wind, the snow drift accumulations will increase in size on Friday. The avalanche prone locations are sometimes covered with new snow and are barely recognisable.

Danger Level 3 - Considerable

AM:



Tendency: Constant avalanche danger →
 on Friday 03 02 2023

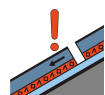


Wind slab



Treeline

Snowpack stability: **poor**
 Frequency: **some**
 Avalanche size: **medium**



Persistent weak layer



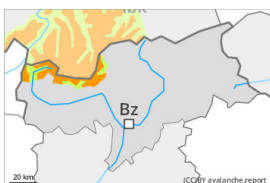
2200m

Snowpack stability: **poor**
 Frequency: **some**
 Avalanche size: **medium**

PM:



Tendency: Constant avalanche danger →
 on Friday 03 02 2023

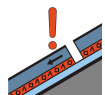


New snow



Treeline

Snowpack stability: **very poor**
 Frequency: **many**
 Avalanche size: **medium**



Persistent weak layer



Treeline

Snowpack stability: **poor**
 Frequency: **some**
 Avalanche size: **medium**

Significant increase in avalanche danger as the snowfall becomes more intense.

The new snow and wind slabs can be released easily, even by a single winter sport participant, in all aspects above the tree line. Mostly avalanches are medium-sized. The avalanche prone locations are quite prevalent and are barely recognisable because of the poor visibility. Individual avalanche prone locations are to be found also in areas close to the tree line. The prevalence of avalanche prone locations and likelihood of triggering will increase with altitude. Remotely triggered avalanches are possible. Additionally avalanches can also penetrate deep layers. Such avalanche prone locations are to be found in steep terrain above the tree line.

Snowpack

Danger patterns

dp.6: cold, loose snow and wind

dp.1: deep persistent weak layer

Over a wide area 10 to 30 cm of snow, and even more in some localities, will fall on Thursday. The fresh snow as well as the wind slabs that are being formed by the storm force northwesterly wind will be deposited on soft layers in all aspects above the tree line. In some places new snow and wind slabs are lying on surface hoar, in particular on the Main Alpine Ridge and to the north. The snowpack will become

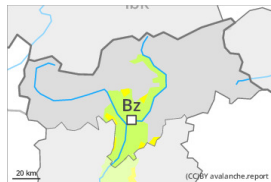


increasingly prone to triggering. In shady places that are protected from the wind the snowpack is weaker. Faceted weak layers exist in the snowpack, especially on steep slopes above the tree line. Whumpfung sounds and the formation of shooting cracks when stepping on the snowpack indicate the existence of a weak snowack.

Tendency

Restraint is recommended. The new snow and wind slabs remain for the foreseeable future prone to triggering. As a consequence of the strong to storm force northwesterly wind, the snow drift accumulations will increase in size on Friday. The avalanche prone locations are sometimes covered with new snow and are barely recognisable.

Danger Level 2 - Moderate



Tendency: Constant avalanche danger →
on Friday 03 02 2023



Wind slab



Treeline

Snowpack stability: **poor**

Frequency: **some**

Avalanche size: **small**

Fresh wind slabs require caution.

The wind will be strong at times. Adjacent to ridgelines as well as at elevated altitudes mostly small wind slabs will form. These can be released by a single winter sport participant in isolated cases. They are to be avoided in very steep terrain. Mostly avalanches are small.

Snowpack

Danger patterns

dp.6: cold, loose snow and wind

The fresh wind slabs will be deposited on weak layers in particular on very steep shady slopes. In shady places that are protected from the wind the snowpack is weaker.

Hardly any weak layers exist in the old snowpack.

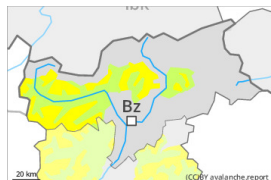
Tendency

As a consequence of the strong to storm force northwesterly wind, the snow drift accumulations will increase in size on Friday.

Danger Level 2 - Moderate



Tendency: Increasing avalanche danger
 on Friday 03 02 2023



Wind slab

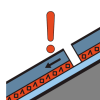


Treeline

Snowpack stability: **poor**

Frequency: **some**

Avalanche size: **medium**



Persistent weak layer



2200m

Snowpack stability: **poor**

Frequency: **some**

Avalanche size: **medium**

Wind slabs and weakly bonded old snow represent the main danger. Increase in avalanche danger in the course of the day.

The fresh wind slabs can be released by a single winter sport participant in all aspects above the tree line. The avalanche prone locations are quite prevalent but are clearly recognisable to the trained eye. Individual avalanche prone locations are to be found also in areas close to the tree line. The number and size of avalanche prone locations will increase with altitude. In the regions neighbouring those that are subject to danger level 3 (considerable) the avalanche danger is higher. Mostly avalanches are medium-sized.

Additionally avalanches can also be released in deep layers. Such avalanche prone locations are to be found on steep, little used shady slopes above approximately 2200 m and on steep sunny slopes above approximately 2500 m.

Snowpack

Danger patterns

dp.6: cold, loose snow and wind

dp.1: deep persistent weak layer

In some regions 10 cm of snow, and even more in some localities, will fall on Thursday. In the south less snow will fall.

The fresh snow as well as the wind slabs that are being formed by the storm force northwesterly wind will be deposited on soft layers in all aspects above the tree line. In some places various wind slab layers are lying on surface hoar. The snowpack will become increasingly prone to triggering. In shady places that are protected from the wind the snowpack is weaker.

Faceted weak layers exist in the old snowpack, especially on shady slopes above approximately 2200 m, as well as on sunny slopes above approximately 2500 m.

Whumpfung sounds and the formation of shooting cracks when stepping on the snowpack indicate the existence of a weak snowpack.

Tendency



Care is recommended. The new snow and wind slabs remain for the foreseeable future prone to triggering. As a consequence of the strong to storm force northwesterly wind, the snow drift accumulations will increase in size on Friday.