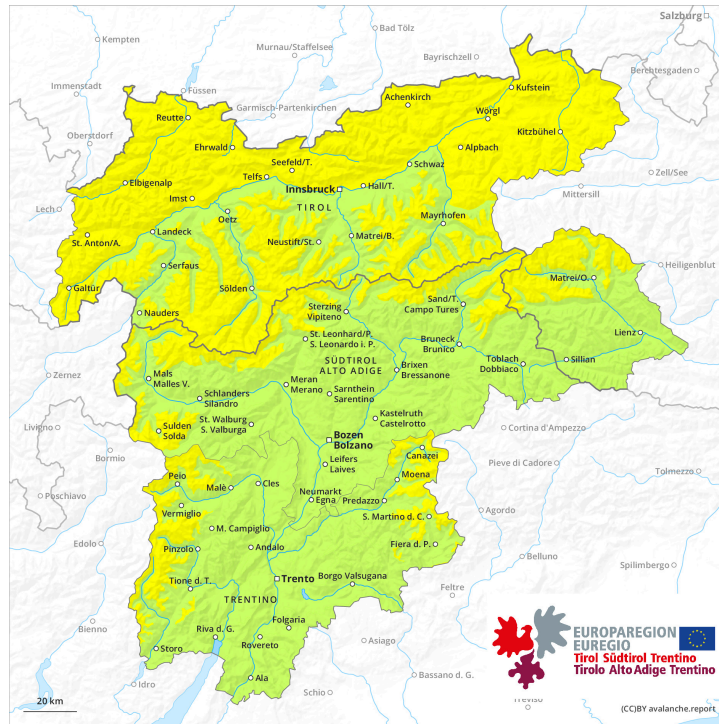
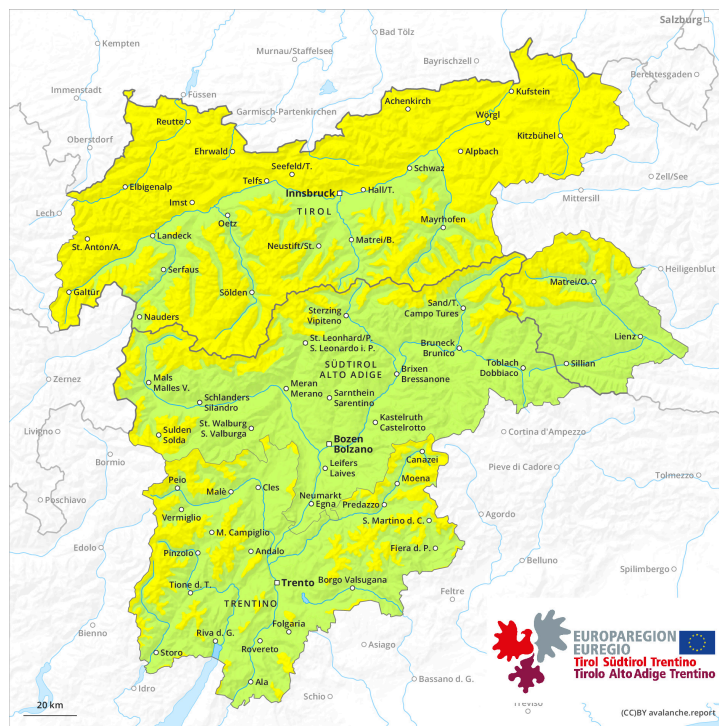




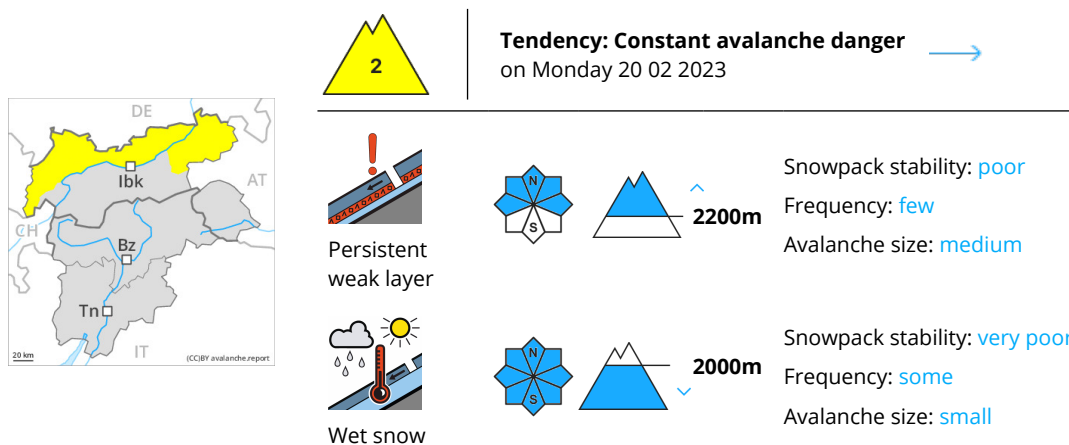
AM



PM



Danger Level 2 - Moderate



Weakly bonded old snow and wet snow require caution.

Weak layers in the old snowpack can be released in very isolated cases by individual winter sport participants, especially at transitions from a shallow to a deep snowpack, when entering gullies and bowls for example, as well as in little used backcountry terrain. The avalanche prone locations are rare but are difficult to recognise. In isolated cases avalanches are medium-sized. In steep terrain there is a danger of falling on the hard snow surface.

In the next few hours the weather will be cloudy. Below approximately 2000 m mostly small wet and gliding avalanches are possible as a consequence of the rain.

Snowpack

Danger patterns

dp.1: deep persistent weak layer

dp.3: rain

The snowpack will be quite well bonded. Faceted weak layers exist in the snowpack, especially on shady slopes above approximately 2200 m, and on sunny slopes at elevated altitudes.

On Sunday the wind will be strong in the vicinity of peaks. Above approximately 2000 m snow will fall in some regions. The wind will transport only a little snow.

Below approximately 2000 m: The surface of the snowpack is hardly frozen at all. Some rain will fall. The rain will give rise to significant softening of the snowpack.

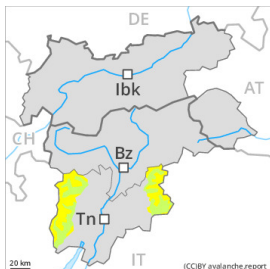
Tendency

The wind will be strong adjacent to ridgelines in some regions.

Slight increase in danger of wet and gliding avalanches in the course of the day.

Danger Level 2 - Moderate

AM:



Tendency: Constant avalanche danger →
 on Monday 20 02 2023

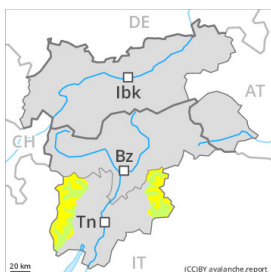


Persistent weak layer



Snowpack stability: **poor**
 Frequency: **few**
 Avalanche size: **medium**

PM:



Tendency: Constant avalanche danger →
 on Monday 20 02 2023



Wet snow



Snowpack stability: **poor**
 Frequency: **few**
 Avalanche size: **medium**



Persistent weak layer



Snowpack stability: **poor**
 Frequency: **some**
 Avalanche size: **medium**

Weakly bonded old snow and wet snow require caution.

The early morning will see quite favourable conditions generally.

Weak layers in the old snowpack can still be released in some places by individual winter sport participants, especially at transitions from a shallow to a deep snowpack, when entering gullies and bowls for example, as well as in little used backcountry terrain. The avalanche prone locations are rare but are difficult to recognise. Mostly avalanches are medium-sized. On very steep sunny slopes small and medium-sized moist and wet avalanches are possible as a consequence of warming during the day. Backcountry tours should be concluded before midday.

Snowpack

The snowpack will be quite well bonded. Isolated avalanche prone weak layers exist in the snowpack, especially on shady slopes above approximately 2200 m.

On Saturday the wind will be strong in the vicinity of peaks. The wind will transport only a little snow. The weather will be mild. The surface of the snowpack is frozen, but not to a significant depth and will soften during the day.

At intermediate altitudes only a small amount of snow is lying for the time of year.

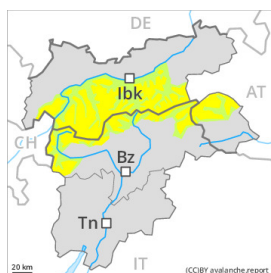
Tendency

On Sunday the wind will be strong adjacent to ridgelines in some regions.



Increase in danger of moist avalanches in the course of the day.

Danger Level 2 - Moderate



Tendency: Constant avalanche danger →
on Monday 20 02 2023



Persistent
weak layer



Snowpack stability: **poor**
Frequency: **few**
Avalanche size: **medium**

Weakly bonded old snow and wet snow require caution.

Currently there are quite favourable conditions generally.

Weak layers in the old snowpack can still be released in some places by individual winter sport participants, especially at transitions from a shallow to a deep snowpack, when entering gullies and bowls for example, as well as in little used backcountry terrain. The avalanche prone locations are rare but are difficult to recognise. Avalanches are medium-sized.

On extremely steep sunny slopes individual small to medium-sized wet avalanches are possible as a consequence of warming during the day and solar radiation, in particular below approximately 2400 m.

Snowpack

Danger patterns

dp.1: deep persistent weak layer

The snowpack will be quite well bonded. Isolated avalanche prone weak layers exist in the bottom section of the snowpack, especially on shady slopes above approximately 2200 m, and on sunny slopes at elevated altitudes.

On Sunday the wind will be strong to storm force in some cases. The wind will transport only a little snow. The surface of the snowpack has frozen to form a strong crust. Sunshine and high temperatures will give rise as the day progresses to gradual softening of the snowpack. This applies especially on sunny slopes below approximately 2400 m. The surface of the snowpack will soften later than the day before.

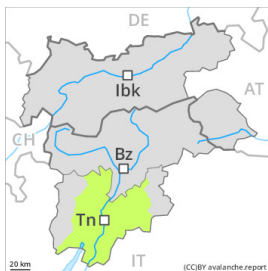
The snowpack will be subject to considerable local variations above the tree line. At low and intermediate altitudes less snow than usual is lying.

Tendency

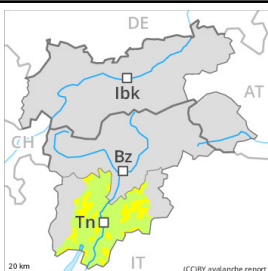
The weather will be mild. Slight increase in danger of wet avalanches in the course of the day.

Danger Level 2 - Moderate

AM:



PM:



Wet snow



Treeline

Snowpack stability: **poor**

Frequency: **some**

Avalanche size: **medium**

The early morning will see favourable conditions mostly, but the danger of wet avalanches will increase later.

On very steep sunny slopes small to medium-sized wet avalanches are possible as a consequence of warming during the day. Backcountry tours should be concluded timely.

Individual avalanche prone locations for dry avalanches are to be found in particular on extremely steep shady slopes and at transitions from a shallow to a deep snowpack. These places are very rare and are difficult to recognise. In steep terrain there is a danger of falling on the hard snow surface.

Snowpack

The snowpack is favourably layered and its surface has a melt-freeze crust that is barely capable of bearing a load, in particular on steep sunny slopes. Sunshine and high temperatures will give rise as the day progresses to gradual moistening of the snowpack.

Faceted weak layers exist in the centre of the snowpack, especially on shady slopes above approximately 2200 m. The snowpack will be subject to considerable local variations above the tree line. In all regions only a small amount of snow is lying for the time of year.

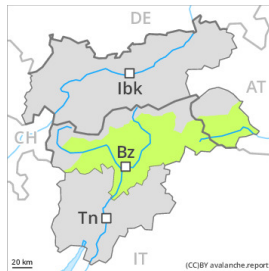
On Saturday the wind will be strong in the vicinity of peaks over a wide area. The wind will transport only a little snow.

Tendency

On Sunday the wind will be strong adjacent to ridgelines in some regions.

Increase in danger of moist avalanches in the course of the day.

Danger Level 1 - Low



Tendency: Constant avalanche danger →
on Monday 20 02 2023

Currently there are favourable conditions generally.

Individual avalanche prone locations for dry avalanches are to be found in particular on extremely steep shady slopes and at transitions from a shallow to a deep snowpack. These places are very rare but are difficult to recognise. In steep terrain there is a danger of falling on the hard snow surface.

On extremely steep sunny slopes individual mostly small wet avalanches are possible as a consequence of warming during the day and solar radiation, in particular below approximately 2400 m.

Snowpack

Danger patterns

dp.1: deep persistent weak layer

The snowpack is favourably layered and its surface has a crust that is strong in many cases, in particular on steep sunny slopes. Sunshine and high temperatures will give rise as the day progresses to slight moistening of the snowpack. The surface of the snowpack will soften later than the day before.

In very isolated cases weak layers exist in the centre of the snowpack, especially on shady slopes above approximately 2200 m, and on sunny slopes at elevated altitudes. The snowpack will be subject to considerable local variations above the tree line. At low and intermediate altitudes less snow than usual is lying.

On Sunday the wind will be strong in some cases. The wind will transport only a little snow.

Tendency

The weather will be mild. Slight increase in danger of wet avalanches in the course of the day.